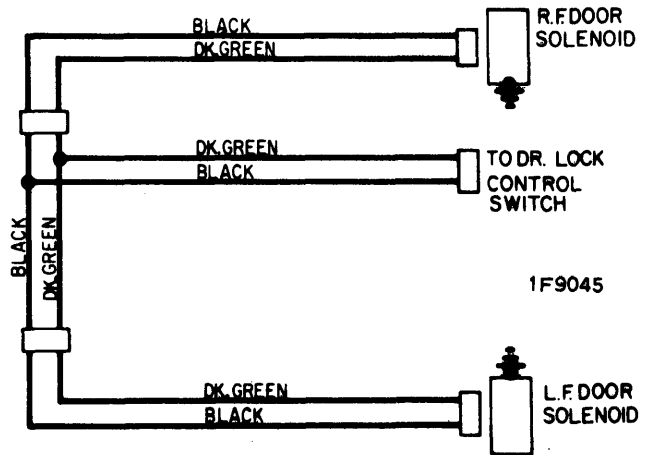
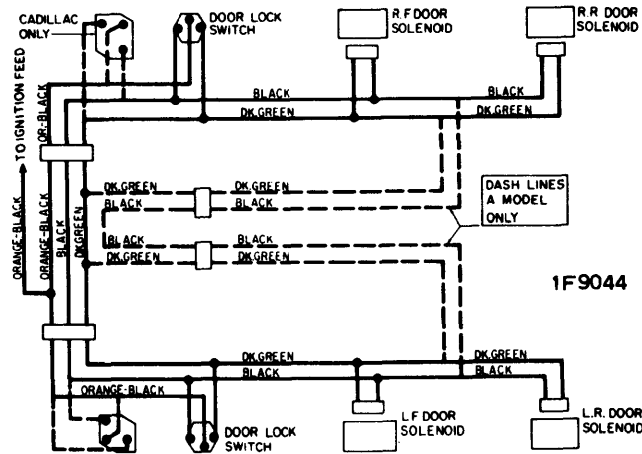


# 1972 Door Locks

Body Type	GM Division	Car Name
"A" Body	Buick	Skylark & Custom, GS.
	Chevrolet	Chevelle Nomad & 300, Chevelle Malibu, Concours Estate, Monte Carlo.
	Oldsmobile	F-85, Cutlass & Supreme, 442, Vista Cruiser.
	Pontiac	All Tempest, Grand Prix.
"B" Body	Buick	LeSabre, Estate Wagon, Centurion.
	Chevrolet	Biscayne, Bel Air, Impala, Caprice.
	Oldsmobile	All Delta 88 Models.
	Pontiac	Catalina, Brougham, Bonneville, Grandville.
"C" Body	Buick	Electra.
	Cadillac	Fleetwood Brougham, Calais, DeVille.
	Oldsmobile	All 98 Models.
"E" Body	Buick	Riviera.
	Cadillac	Eldorado.
	Oldsmobile	Toronado.
"F" Body	Chevrolet	Camaro.
	Pontiac	Firebird.



DOOR LOCK WIRING DIAGRAM - "F" STYLE



DOOR LOCK WIRING DIAGRAM - "A-B-C-E" STYLES