

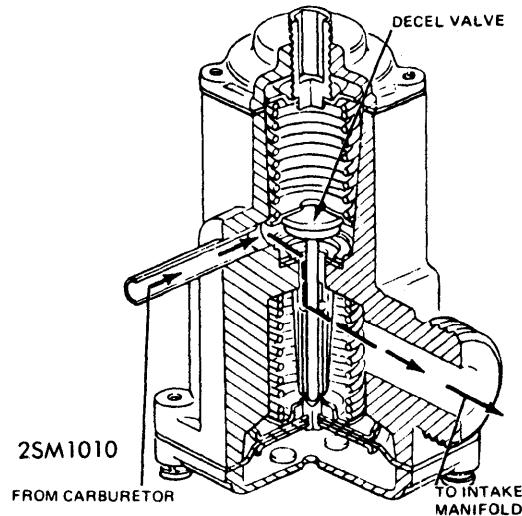
Exhaust Emission Systems

1973 CAPRI DECEL VALVE (Cont.)

Engine	Seconds
2000 cc (Man. Trans.).....	2.5-3.5
2000 cc (Auto. Trans.).....	1.5-3.5
2600 cc (All).....	1.5-3.5

2) If adjustment required, remove and discard colored cap (if equipped) for access to nylon adjuster. Using a suitable tool, back adjuster outward to increase time or turn adjuster inward to increase time. One turn of adjuster, in either direction, will increase or decrease time approximately 1/2 second.

3) When nylon adjuster is flush with top of threaded collar, the maximum permissible adjustment is 1 full turn inward or 9 turns outward. When adjustments are completed, snap in new service replacement colored cap in top of valve.



CAPRI DECEL VALVE

CAPRI TUNE-UP

2000 cc Engine (1972-73)
2600 cc Engine (1972-73)

Correct ignition timing and carburetor idle adjustment is important to maintain correct emission levels and for proper running of vehicle. See *Tune-Up Decal* in engine compartment for ignition and carburetor adjustment specifications.

IGNITION TIMING

With engine at normal operating temperature and dwell angle set correctly, disconnect and plug vacuum lines. Connect timing light and tachometer to engine. Start engine and reduce idle speed to 600 RPM to be sure that centrifugal advance is not operating. Adjust ignition timing to specifications by rotating distributor. Accelerate engine to 2000 RPM and make sure that timing advances. Unplug and reconnect vacuum advance line and again accelerate engine to 2000 RPM. Advance should begin sooner and advance further than when accelerated with vacuum line disconnected. Connect distributor vacuum retard unit to intake manifold vacuum and make sure that timing is retarded.

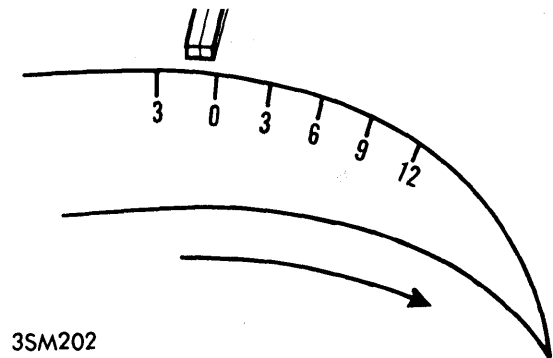
IDLE SPEED & MIXTURE

Engine and underhood temperatures must be stabilized before idle adjustments are made. Run engine a minimum of 20 minutes at 1500 RPM to achieve this condition. With ignition timing set to specifications, disconnect carburetor to decel valve hose and plug decel valve fitting. With man. trans. in "N" or auto. trans. in "D" set idle speed to specifications by adjusting curb idle screw with air cleaner installed. Turn idle mixture adjusting screw inward to obtain smoothest idle possible within range of idle limiter caps. *NOTE — If satisfactory idle cannot be obtained, proceed to supplemental fuel mixture procedure below.*

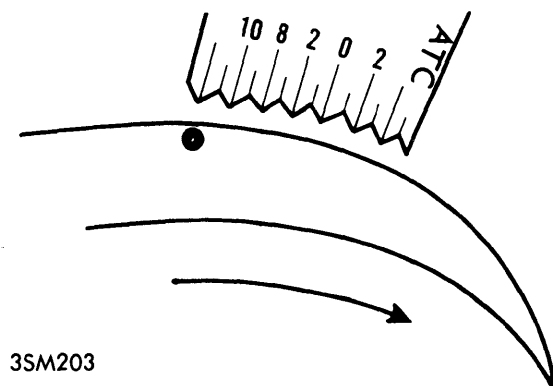
SUPPLEMENTAL FUEL MIXTURE PROCEDURE

If satisfactory idle cannot be obtained with normal idle setting procedures, check that following items are correct before con-

tinuing: No vacuum leaks, ignition system wiring continuity, spark plugs, point dwell, point condition, initial ignition timing, fuel level, crankcase ventilation system, valve clearance and engine compression. If all of above points are correct and idle is still not satisfactory, check air/fuel ratio by means of exhaust gas analyzer and adjust to specifications.



2000 cc TIMING MARKS



2600 cc TIMING MARKS