

# 1978 ENGINE IDENTIFICATION

## Ford Motor Co.

### ENGINE CODE EXPLANATION

Engine code is explained in accompanying illustration and "Engine Code" chart. Also note that the fifth digit of the VIN will give engine code. Engine identification tag contains information on cubic inch displacement, model year, production date, plant, change level and engine calibration data.

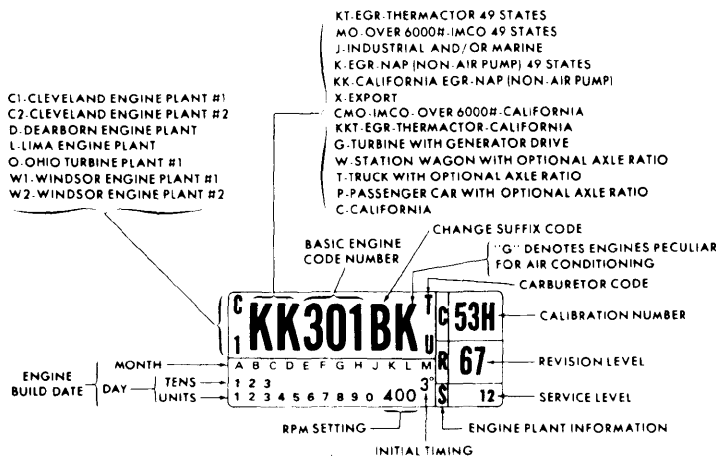


Fig. 3 Ford Motor Co. Engine Tag Explanation

### ENGINE TAG LOCATION

Engine tag is located on front, right side of engine.

### Ford Motor Co. Engine Codes

Model	Code	Eng./H.P.
Ford, Mercury	A	460"/202
Lincoln, Mark V	A	460"/210
Ford	C	460" Police
Cougar, Ford, LTD II, T-Bird	F	302"/134
Fairmont, Granada, Monarch, Mustang II, Zephyr	F	302"/139①
Cougar, LTD II, T-Bird	H	351"/144②
Ford	H	351"/144③
Mercury	H	351"/145④
Granada, Monarch	L	250"/97
Cougar, Lincoln, LTD II, Mark V, T-Bird	S	400"/166
Ford, Mercury	S	400"/160
Fairmont, Zephyr	T	200"/85
Bobcat, Fairmont, Mustang II, Pinto, Zephyr	Y	140"/88
Bobcat, Mustang II, Pinto	Z	171"/90

- ① - Exc. Calif. For Calif., 302"/139 HP.
- ② - Windsor built. Also, 351"/152 HP modified.
- ③ - Windsor built. Also, 351"/145 HP modified.
- ④ - Modified.

## General Motors

### BUICK

### Buick Engine Codes (Cont.)

### ENGINE CODE LOCATIONS

- 196" V6** - Stamped on right side of front of block.
- 231" V6** - Stamped either on front right side of block next to water pump or on left side of block between exhaust manifold and forward spark plugs.
- 301", 305", 350" (Exc. Olds Design) & 400" V8** - Stamped on right front of block.
- 350" (Oldsmobile Design) & 403" V8** - Stamped on left front of block.

### Buick Engine Codes

Model	Code(s)	Eng./Carb.
LeSabre, Est. Wag., Riviera	CEK	305"/2
LeSabre, Est. Wag., Riviera	CHM, CKM	350"/4
Century, Regal	CMC	350"/4
Century, Regal	CPZ, CRU, CRX, CRY, CRZ, CTM, CTR, CTW, CTX, C3P	305"/2

Model	Code(s)	Eng./Carb.
Century, Regal, Skylark	EA	231"/2
Skylark	EC, EE	231"/2
LeSabre, Est. Wag., Riviera, Skylark, Century, Regal	EG	231"/2
LeSabre, Est. Wag., Riviera	EI, EJ, EK, EL, EO	231"/2
LeSabre, Est. Wag., Riviera, Century, Regal	EP, ER, ES	231"/4
LeSabre, Est. Wag., Riviera, Electra	MA, MB	350"/4
Skyhawk	OA, OB, OC, OD, OE, OF, OG	231"/2
Century, Regal	OH, OK, OL	231"/2
Skylark	OR	231"/2
Century, Regal	PA, PB	196"/2
LeSabre, Est. Wag., Riviera, Electra	Q2, Q3	350"/4①
LeSabre, Est. Wag., Riviera, Electra	T0, TP, TQ, TS	350"/4②
LeSabre, Est. Wag., Riviera, Electra	UA, UB, U2, U3, VA, VB	403"/4
LeSabre, Est. Wag., Riviera	XA, XC	301"/2

- ① - 170 H.P.
- ② - Oldsmobile Design.

# 1978 ENGINE IDENTIFICATION

## General Motors (Cont.)

### CADILLAC

#### ENGINE CODE LOCATIONS

**350" V8** — Engine code is portion of number stamped on left front of cylinder block next to water pump.

**425" V8** — Engine code is portion of number stamped on pad on left rear of block behind intake manifold.

#### Cadillac Engine Code

Model	Code	Engine
Seville .....	B .....	350" ①
Exc. Seville .....	S .....	425" ②
Exc. Seville .....	R .....	425" ①

① — Electronic Fuel Injection.

② — 4-Bbl. Carb.

### CHEVROLET

#### ENGINE CODE LOCATIONS

**4 Cyl.** — Stamped on right side of block below No. 1 spark plug (Chevette) or above starter (Monza).

**6 Cyl.** — Stamped on right side of block behind distributor.

**V6 & V8** — Stamped on right side of block just forward of cylinder head.

#### Chevrolet Engine Codes

Model	Code	Eng./H.P.
Chevrolet, Nova, Camaro .....	CCH, CCJ, CCK, CCL, CCM .....	250"/110
Chevrolet .....	CEJ, CEK .....	305"/145
Malibu .....	CER .....	305"/145
Camaro .....	CHF, CHH, CHJ, CHK, CHL, CHR, CHS, CHT, CHU .....	350"/180
Chevrolet .....	CHF, CHH, CHJ, CHL, CHM .....	350"/180
Nova .....	CHH, CHJ, CHL .....	350"/180
Corvette .....	CHW .....	350"/180
Corvette .....	CLM, CLR, CLS .....	350"/170
Corvette .....	CMR, CMS .....	350"
Chevrolet .....	CMA, CMB, CMC, CMD, CNT .....	350"/170
Malibu .....	CPZ, CRU, CRW, CRX, CRY, CRZ .....	305"/145
Monza .....	CTA, CTB, CTC, CTD .....	305"/145
Monza .....	CTF .....	350"/140
Camaro, Nova .....	CTH, CTJ, CTK .....	305"/145
Chevrolet .....	CTL .....	305"/145
Malibu .....	CWA, CWB, CWC, CWD .....	200"
Chevette .....	CYA, CYB, CYJ, CYK, CYL, CYM, CYR, CYS, CYT, CYU, CYW, CYX, ZTT, ZTU, ZTW, ZTX .....	98"/63
Nova .....	C2D .....	250"/110
Nova .....	C2K .....	305"/145
Camaro .....	C3N .....	305"/145
Camaro .....	C3Y .....	250"/110
Malibu .....	EA, OH, OK .....	231"/105

### Chevrolet Engine Codes (Cont.)

Model	Code	Eng./H.P.
Monza .....	OA, OC, OD, OE, OF .....	231"/105
Monza .....	PC, PD .....	196"
Monza .....	WB, WD, WH, XL, XN, ZA, ZB, ZF, ZH .....	151"/87

### OLDSMOBILE

#### ENGINE CODE LOCATIONS

**4 Cyl.** — Stamped on right side of engine block to rear of distributor or at right rear of block on bellhousing flange.

**V6** — Stamped on right front of block near water pump. Also on code tape on front of left valve cover.

**260", 350" (VIN N) & 403" V8** — Stamped on oil filler tube. Also on code tape on front of left valve cover.

**305" & 350" (VIN L)** — Stamped on pad at right front of block.

#### Oldsmobile Engine Codes

Model	Code	Eng./Carb.
Omega .....	EA, EC, EE .....	231"/2
Cutlass, Vista Cruiser, Delta 88, Custom Cruiser, Omega .....	EG, EI, EJ, EK, EL .....	231"/2
Custom Cruiser .....	MA, MB .....	350"(X)/4
Starfire .....	OA, OB, OC, OD, OE, OF, OG, OH .....	231"/2
Delta 88, Custom Cruiser, 98, Regency .....	QB, QC .....	350"(N) ①
Cutlass, Vista Cruiser .....	QD, QE, QJ, QK, QL, QN .....	260"/2
Delta 88, Custom Cruiser, 98, Regency .....	QO, QP, QQ, QS, Q2, Q3, TB, TO, TQ, TS .....	350"(R)/4
Delta 88, Custom Cruiser .....	QT, QU .....	260"/2
Cutlass, Vista Cruiser .....	TJ, TK .....	260"/2
Delta 88, Custom Cruiser, 98, Regency .....	UA, UB, U2, U3, VA, VB .....	403"/4
Toronado .....	UC, U4, VC .....	403"/4
Starfire .....	WB, WD, WH, XL, XN, ZA, ZB .....	151"/2

**NOTE** — Letters in parentheses represent VIN codes.

### PONTIAC

#### ENGINE CODE LOCATIONS

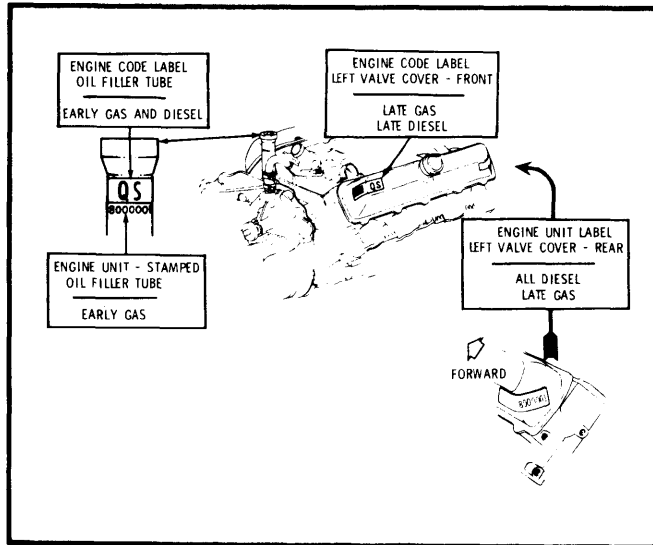
**4 Cyl.** — Stamped on right side of block beside distributor.

**V6** — Stamped on right front of block near water pump or on left side of block below exhaust manifold.

# 1978 ENGINE IDENTIFICATION General Motors (Cont.)

**V8 (Exc. Olds Design 350" & 403")** – Stamped on right front of block.

**Oldsmobile Design 350" & 403"** – Stamped on oil filler tube.



**Fig. 4 Typical General Motors Engine Code Location**

## Pontiac Engine Codes

Model	Code	Eng./VIN
Sunbird	AC, AD, WB, WD, WH, XL, XN, ZA, ZB, ZC, ZD, ZF, ZH, ZJ, ZK, ZL, ZN	151"/V
Phoenix	YB, YC	151"/V
LeMans, Grand Prix, Firebird, Phoenix	EA, EC, EE, OR, OH, OK	231"/A
Pontiac	EI, EJ, EK, EL	231"/A
Sunbird	AC, OB, OC, OD, OE, OF	231"/A
LeMans, Grand Prix	PF, PH, PZ, RU, RX, RY, RZ, TM, TR, TT, TU, TW, TX, TY, TZ	305"/H,U
Firebird, Phoenix	TH, TJ, TK, 3N, 3X	305"/U
LeMans, Pontiac, Firebird	XA, XC	301"/Y
LeMans, Pontiac, Firebird	XF, XH	301"/W
Firebird, Phoenix	HF, HJ, HL, HR	350"/L
Phoenix	MA, MB	350"/X
LeMans	MC	350"/L
Pontiac	Q2, Q3, TO, TP, TQ, TS	350"/R
LeMans, Grand Prix	TS	350"/R
Firebird	WC, X7, YA	400"
Pontiac	XJ, XK, X9, YH, YJ, YK	400"
Firebird, Pontiac	U2, U3, VA, VB	403"