

1977 ENGINE IDENTIFICATION Ford Motor Co.

1977 MODELS

Engine Code Location – Engine code letter or number is fifth digit in eleven digit Vehicle Identification Number stamped on a tag on left front door lock face panel or on metal tab riveted to instrument panel close to windshield on drivers side and visible from outside vehicle.



Fig. 1 Vehicle Identification Number Plate

Engine Label – Identification labels are located as follows:

- 2300cc 4-Cylinder – On timing belt cover.
- 2800cc V6 – Front of rocker arm cover.

- 200" & 250" 6-Cylinder – Front of rocker cover.
- V8 Engines – Front of right right hand rocker cover.

Engine Code

Displ. & Carb.

A	460" V8 4-Bbl.
C	460" V8 4-Bbl. Police
F	302" V8 2-Bbl.
H	351" V8 2-Bbl.
L	250" 6-Cyl. 1-Bbl.
R	400" V8 4-Bbl.
S	400" V8 2-Bbl.
T	200" 6-Cyl. 2-Bbl.
Y	2300cc 4-Cyl. 2-Bbl.
Z	2800cc V6 2-Bbl.

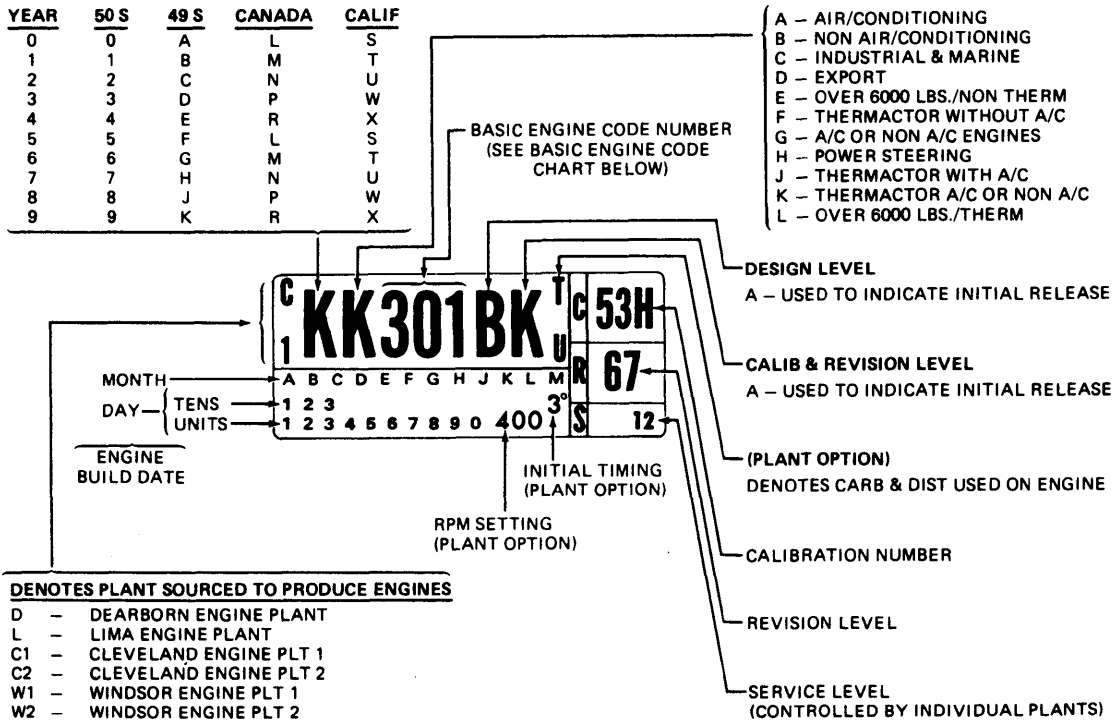


Fig. 2 Ford Motor Co. Engine Label

Oldsmobile & Pontiac

1977 OLDSMOBILE

Engine Codes – Engine codes are found in the following locations:

- 140" 4-Cyl. – On machined pad at right side of block above starter.
- 231" V6 – Right side of block near water pump and on front of left rocker arm cover.
- 260", 350" (Except VIN "L") & 403" V8 – Stamped on code tape located on oil filler tube.
- 305" & 350" V8 (VIN "L") – Pad at front right side of block.

1977 PONTIAC

Engine Codes – Engine codes are found in the following locations:

- 140" 4-Cyl. – On machined pad at right side of block above starter.
- 150" 4-Cyl. – On distributor mounting pad.
- 231" V6 – Right side of block near water pump.
- 301", 350", 400" V8 (VIN "Y, P, Z") – Pad at front right side of block below head.
- 350" & 403" V8 (VIN "R, K") – On oil filler tube.
- 305", 350" V8 (VIN "L, U") – Machined pad on front block below right head.