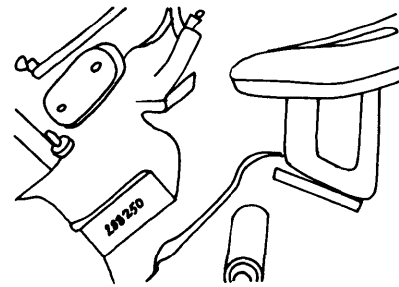


# 1976 ENGINE IDENTIFICATION Cadillac

## 1976 MODELS

**Engine Code Location** — Engine code letter is fifth digit in a thirteen digit Vehicle Identification Number, stamped on a metal plate which is riveted onto upper left corner of instrument panel and visible from outside vehicle. The code letter is also stamped on left front of block next to water pump on 350" engines, or on left rear of block behind intake manifold on 500" engines.

Engine Code	Displ. & Carb.
R .....	350" V8
S .....	500" V8

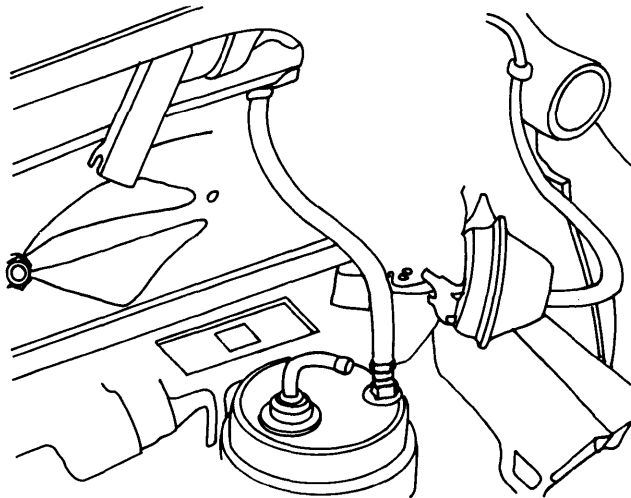


**ENGINE SERIAL & VIN NUMBER LOCATION**  
(500" V8 SHOWN)

## Chevrolet

### 1976 MODELS

**4 Cylinder Engine Code Location** — Code letters are suffix of Engine Identification Number which is located on right side of block above starter on 140" engine and on a pad on right side of block below #1 spark plug on 1400 cc and 1600 cc engines.



**6 CYL. ENGINE CODE LOCATION**

**6 Cylinder Engine Code Location** — Code letters are stamped on a pad located at right side of cylinder block to rear of distributor mounting pad.

**V8 Engine Code Location** — Code letters are stamped on a machined pad on front right side of engine block.

Engine Code	Displ.
CVA,CVB,CDS,CDU (Federal) .....	1400 cc 4 Cyl.
CDD,CDT (Calif.) .....	1400 cc 4 Cyl.
CNA,CNB,CYC,CYD (Federal) .....	1600 cc 4 Cyl.
CNJ,CNK,CYJ,CYK, CYW,CYX (Calif.) .....	1600 cc 4 Cyl.
CBS,CBT,CBU,CBW (Federal) .....	140" 4 Cyl.
CBK (Calif.) .....	140" 4 Cyl.
CCB,CCD,CCF,CCJ (Federal) .....	250" 6 Cyl.
CCC (Calif.) .....	250" 6 Cyl.
CZU,CZW (Federal) .....	262" V8
CPA,CPB,CPK (Federal) .....	305" V8
CPI,CPL (Calif.) .....	305" V8
CHC,CHS,CHT,CHU,CKC, CKU,CKW,CKX,CKY CLF,CMJ (Federal) .....	350" V8
CKK,CKZ,CLH,CLS,CMH, CML,CMM,CUF (Calif.) .....	350" V8
CSW,CSX (Federal) .....	400" V8
CSA,CSB,CSF, CSJ,CTL (Calif.) .....	400" V8
CXX,CXY (Federal) .....	454" V8

## Chrysler Corp.

### 1976 MODELS

**Engine Code Location** — Fifth digit of thirteen digit serial number, stamped on the Vehicle Identification Plate and located on top of instrument panel visible through windshield, identifies engine.

**Engine Serial Number Location** — On 225", 400" and 440" engines, first digit indicates model year, next three digits designate displacement. On 318" and 360" engines, first digit indicates model year, next letter designates manufacturing

plant and the next three digits designate displacement. Engine serial number is located as follows:

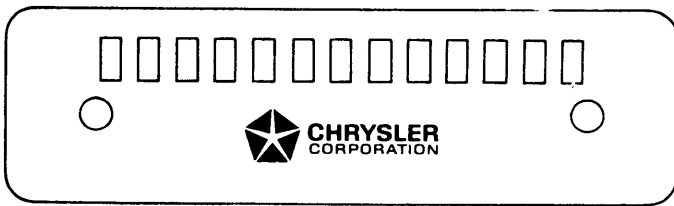
**225" 6 Cyl.** — Located on right side of block below number one spark plug.

**318" & 360" V8** — Located on left front of block below cylinder head.

**400" V8** — Located on cylinder block just forward of number two cylinder bore and adjacent to distributor.

**440" V8** — Left bank, pad adjacent to front tappet rail.

# 1976 ENGINE IDENTIFICATION Chrysler Corp. (Cont.)



**CHRYSLER CORP.  
VEHICLE IDENTIFICATION PLATE**

**Engine Code**

**Displ. & Carb.**

C .....	225" 6 Cyl. 1-Bbl.
G .....	318" V8 2-Bbl.
J .....	360" V8 4-Bbl.
K .....	360" V8 2-Bbl.
L .....	360" V8 4-Bbl. Hi Perf
M .....	400" V8 2-Bbl.
N .....	400" V8 4-Bbl.
P .....	400" V8 4-Bbl. Hi Perf
T .....	440" V8 4-Bbl.
U .....	440" V8 4-Bbl. Hi Perf

## Ford Motor Co.

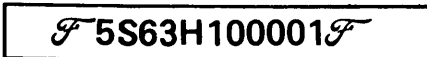
**1976 MODELS**

**Engine Code Location** — Engine code letter or number is fifth digit in eleven digit Vehicle Identification Number stamped on a tag on left front door lock face panel or on metal tab riveted to instrument panel close to windshield on drivers side and visible from outside vehicle.

**Engine Code**

**Displ. & Carb.**

A .....	460" V8 4-Bbl.
C .....	460" V8 4-Bbl. Police
F .....	302" V8 2-Bbl.
H .....	351" V8 2-Bbl.
L .....	250" 6 Cyl. 1-Bbl.
S .....	400" V8 2-Bbl.
T .....	200" 6 Cyl. 1-Bbl.
Y .....	2300 cc 4 Cyl. 2-Bbl.
Z .....	2800 cc V6 2-Bbl.



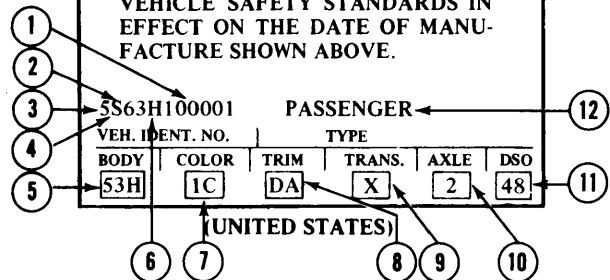
**VEHICLE IDENTIFICATION NUMBER PLATE**

**Engine Label** — An engine identification label is located on front of rocker cover. Label describes CID, model year, year and month of production, change level number and engine calibration information.

**MFD. BY FORD MOTOR CO. IN U.S.A.**

DATE: 07/74 GVWR 5892  
GAWR: FRONT 2964, REAR 2928

THIS VEHICLE CONFORMS TO ALL APPLICABLE FEDERAL MOTOR VEHICLE SAFETY STANDARDS IN EFFECT ON THE DATE OF MANUFACTURE SHOWN ABOVE.



- 1 CONSECUTIVE UNIT NO.
- 2 BODY SERIAL CODE
- 3 MODEL YEAR CODE
- 4 ASSEMBLY PLANT CODE
- 5 BODY TYPE CODE
- 6 ENGINE CODE
- 7 COLOR CODE
- 8 TRIM CODE
- 9 TRANSMISSION CODE
- 10 REAR AXLE CODE
- 11 DISTRICT - SPECIAL EQUIPMENT
- 12 VEHICLE TYPE

**FORD MOTOR CO. VEHICLE CERTIFICATION LABEL**

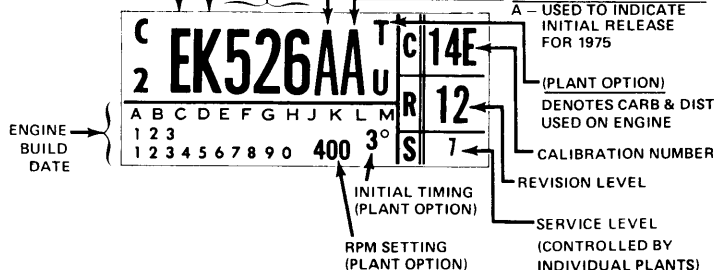
POS. 1	50	49	CALIFORNIA
(YR.)	STATE	STATE	CODING)

0	0	A	L
1	1	B	M
2	2	C	N
3	3	D	P
4	4	E	R
5	5	F	S
6	6	G	T
7	7	H	U
8	8	J	W
9	9	K	X

**BASE**  
(DISPLACEMENT)  
(VEHICLE APPLICATION)  
(INERTIA WEIGHT)  
(AXLE RATIO)  
(TRANSMISSION)

- A - AIR-CONDITIONING
- B - NON AIR/CONDITIONING
- C - INDUSTRIAL & MARINE
- D - EXPORT
- E - OVER 6000 LBS/NON THERM
- F - THERMACTOR WITHOUT A/C
- G - A/C OR NON A/C ENGINES
- H - POWER STEERING
- J - THERMACTOR WITH A/C
- K - THERMACTOR A/C OR NON A/C

DESIGN LEVEL A - USED TO INDICATE INITIAL RELEASE FOR 1975  
CALIB & REVISION LEVEL A - USED TO INDICATE INITIAL RELEASE FOR 1975



**FORD MOTOR CO. ENGINE LABEL**