

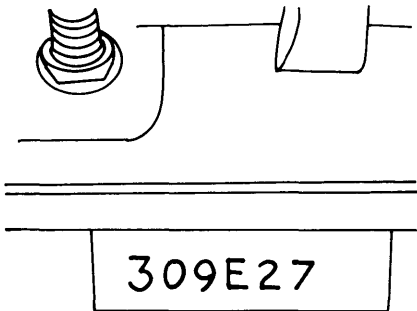
# 1975 ENGINE IDENTIFICATION

## American Motors

### 1975 MODELS

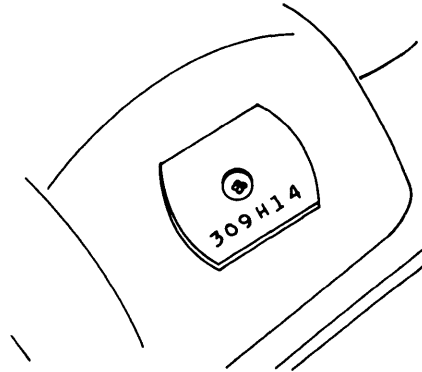
**Engine Code Location** — Engine code letter is seventh digit in thirteen digit Vehicle Identification Number, stamped on a metal plate which is riveted into a depression at upper left corner of instrument panel and is also printed on a non-removable label affixed to left front door adjacent to door latch. Engine codes may also be found on engines as follows:

**6 Cyl. Engine Code Number** — Located on a machined surface of the block between number two and three cylinders. Letter contained in code number identifies engine by cubic inch displacement, carburetor type and compression ratio.



6 CYLINDER ENGINE CODE LOCATION

**V8 Engine Code Number** — Located on a tag which is attached to right bank cylinder head cover. Letter contained in code number identifies engine by cubic inch displacement, carburetor type and compression ratio.



V8 ENGINE CODE LOCATION

Engine Code	Displ. & Carb.
A .....	258" 6 Cyl. 1-Bbl.
E .....	232" 6 Cyl. 1-Bbl.
H .....	304" V8 2-Bbl.
N .....	360" V8 2-Bbl.
P .....	360" V8 4-Bbl.
Z .....	401" V8 4-Bbl.

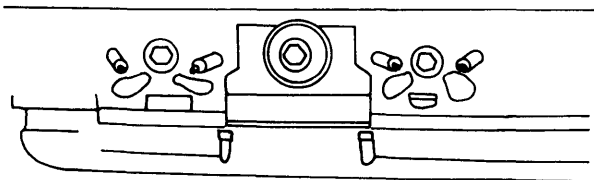
## Buick

### 1975 MODELS

**6 Cylinder Engine Code Location** — Code letters are stamped on a pad located at right side of cylinder block to rear of distributor mounting pad.

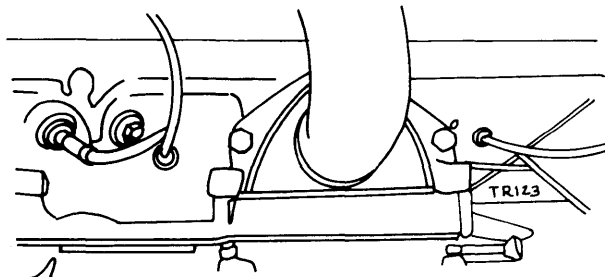
**V6 Engine Code Location** — Located on pad on left side of engine block below first two spark plugs.

**V8 Engine Code Location** — On 260" V8 engines a code tape is located on the oil dipstick tube. On 350" V8 engines number is located on left side of engine block, below front two spark plugs. On 455" V8 engines number is located on left side of engine block below rear two spark plugs.



350" V8 ENGINE CODE LOCATION

Engine Code	Displ. & Carb.
D .....	250" 6 Cyl. 1-Bbl.
AD .....	231" V6 2-Bbl.
QE, QJ, TE, TJ .....	260" V8 2-Bbl.
AB .....	350" V8 2-Bbl.
AM .....	350" V8 4-Bbl.
AF .....	455" V8 4-Bbl.

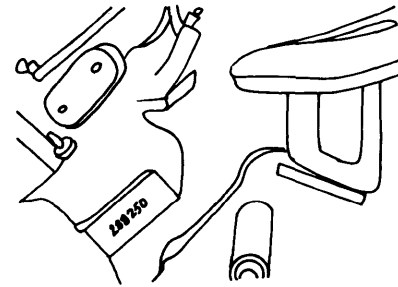


455" V8 ENGINE CODE LOCATION

# 1975 ENGINE IDENTIFICATION Cadillac

## 1975 MODELS

**Engine Code Location** — Engine code letter is fifth digit in a thirteen digit Vehicle Identification Number, stamped on a metal plate which is riveted onto upper left hand corner of instrument panel and visible from outside vehicle. Number is also stamped on block behind intake manifold.



ENGINE SERIAL & VIN NUMBER LOCATION

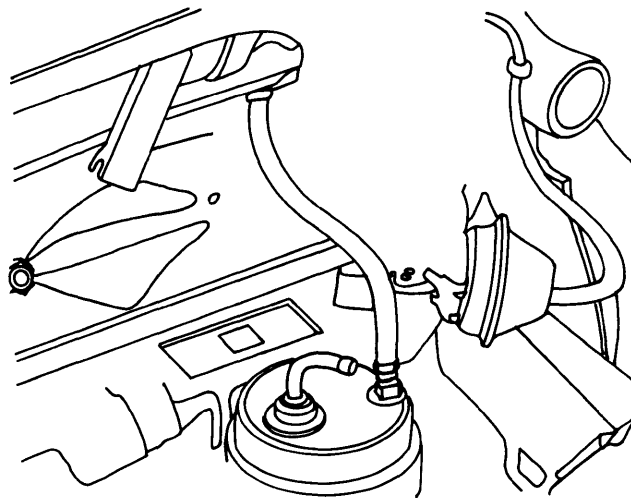
Engine Code	Displ. & Carb.
S .....	500" V8 4-Bbl.

## Chevrolet

### 1975 MODELS

**4 Cylinder Engine Code Location** — Code letters are stamped on a pad located at right side of cylinder block to rear of distributor mounting pad.

**6 Cylinder Engine Code Location** — Code letters are stamped on a pad located at right side of cylinder block to rear of distributor mounting pad.



6 CYL. ENGINE CODE LOCATION

**V8 Engine Code Location** — Code letters are stamped on a machined pad on front right side of engine block.

Engine Code	Displ.
CAM, CAS, CAW, CBB, CBD, CAR, CAT, CAU, CBC, CBF .....	140" 4 Cyl.
CZA, CZB, CZC, CZD, CZF, CZH, CZJ, CZK, CZL, CZM, CZT, CZU, CZW .....	262" V8
CJL, CJM, KJR, CJS, CJT, CJU .....	250" 6 Cyl.
CMU, CMX, CMY, CRQ, CRC, CRD, CRF, CRR, CRS, CRT, CRW, CRX, CRY, CRZ, CUC, CUH, CUJ, CUK, CUL, CUM, CUS, CUT, CRJ, CRK, CRL, CRM, CUA, CUB, CUD .....	350" V8
CHS, CSH, CSR, CSS, CST, CTL, CTM, CTR, CTS .....	400" V8
CXK, CXL, CXW, CXX, CXY .....	454" V8

## Chrysler Corp.

### 1975 MODELS

**Engine Code Location** — Fifth digit of thirteen digit serial number, stamped on the Vehicle Identification Plate and located on top of instrument panel visible through windshield, identifies engine.

**Engine Serial Number Location** — On 225", 400" and 440" engines, first digit indicates model year, next three digits designate displacement. On 318" and 360" engines, first digit indicates model year, next letter designates manufacturing

plant and the next three digits designate displacement. Engine serial number is located as follows:

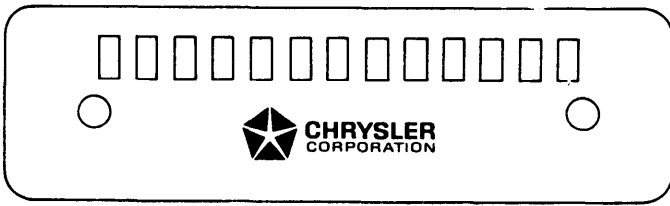
**225" 6 Cyl.** — Located on right side of block below number one spark plug.

**318" & 360" V8** — Located on left front of block below cylinder head.

**400" V8** — Located on cylinder block just forward of number two cylinder bore and adjacent to distributor.

**440" V8** — Left bank, pad adjacent to front tappet rail.

# 1975 ENGINE IDENTIFICATION Chrysler Corp. (Cont.)



CHRYSLER CORP.  
VEHICLE IDENTIFICATION PLATE

**Engine Code**

**Displ. & Carb.**

C .....	225" 6 Cyl. 1-Bbl.
G .....	318" V8 2-Bbl.
J .....	360" V8 4-Bbl.
K .....	360" V8 2-Bbl.
L .....	360" V8 4-Bbl. Hi Perf
M .....	400" V8 2-Bbl.
N .....	400" V8 4-Bbl.
T .....	440" V8 4-Bbl.
U .....	440" V8 4-Bbl. Hi Perf

## Ford Motor Co.

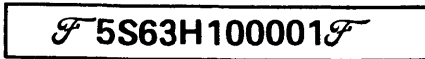
**1975 MODELS**

**Engine Code Location** — Engine code letter or number is fifth digit in eleven digit Vehicle Identification Number stamped on a tag on left front door lock face panel or on metal tab riveted to instrument panel close to windshield on drivers side and visible from outside vehicle.

**Engine Code**

**Displ. & Carb.**

A .....	460" V8 4-Bbl.
C .....	460" V8 4-Bbl. Police
F .....	302" V8 2-Bbl.
H .....	351" V8 2-Bbl.
L .....	250" 6 Cyl. 1-Bbl.
S .....	400" V8 2-Bbl.
Y .....	2300 cc 4 Cyl. 2-Bbl.
Z .....	2800 cc V6 2-Bbl.

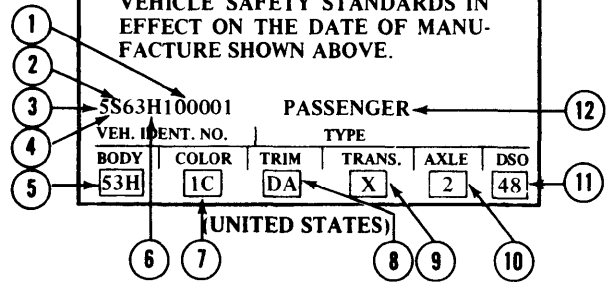


VEHICLE IDENTIFICATION NUMBER PLATE

**Engine Label** — An engine identification label is located on front of rocker cover. Label describes CID, model year, year and month of production, change level number and engine calibration information.

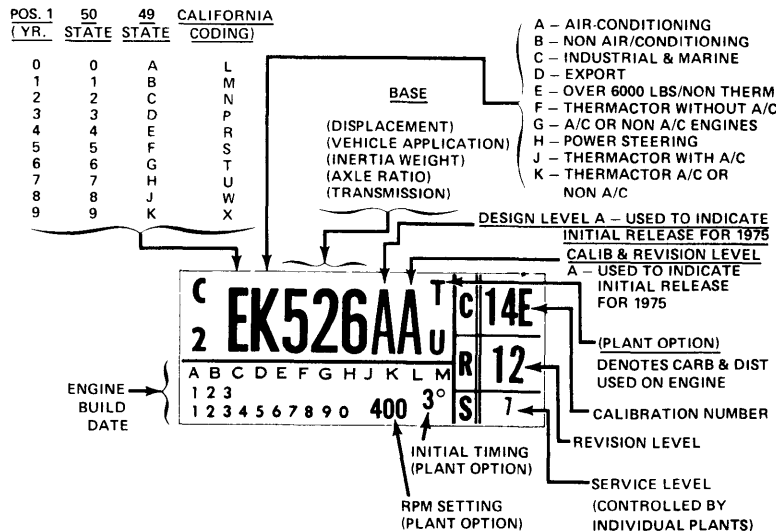
MFD. BY FORD MOTOR CO. IN U.S.A.  
DATE: 07/74 GVWR 5892  
GAWR: FRONT 2964, REAR 2928

THIS VEHICLE CONFORMS TO ALL APPLICABLE FEDERAL MOTOR VEHICLE SAFETY STANDARDS IN EFFECT ON THE DATE OF MANUFACTURE SHOWN ABOVE.



- ① CONSECUTIVE UNIT NO.
- ② BODY SERIAL CODE
- ③ MODEL YEAR CODE
- ④ ASSEMBLY PLANT CODE
- ⑤ BODY TYPE CODE
- ⑥ ENGINE CODE
- ⑦ COLOR CODE
- ⑧ TRIM CODE
- ⑨ TRANSMISSION CODE
- ⑩ REAR AXLE CODE
- ⑪ DISTRICT - SPECIAL EQUIPMENT
- ⑫ VEHICLE TYPE

FORD MOTOR CO. VEHICLE CERTIFICATION LABEL



FORD MOTOR CO. ENGINE LABEL

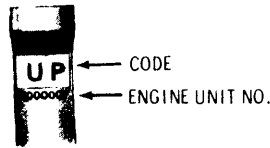
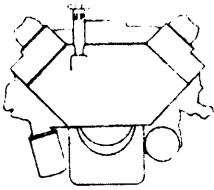
# 1975 ENGINE IDENTIFICATION Oldsmobile

## 1975 MODELS

**6 Cylinder Engine Code Location** — Code letters are stamped on a pad located at right side of cylinder block to rear of distributor mounting pad.

**V6 Engine Code Location** — Located on pad on left side of engine block below first two spark plugs.

**V8 Engine Code Location** — Code for 260", 350" (Exc. Omega), and 455" V8 engines are identified by a code tape installed directly above engine unit number stamped on engine oil fill tube. Omega 350" V8 engines are identified by a code



**V8 ENGINE CODE LOCATION**

stamped on a machines face on engine block on left side below first two spark plugs. The 400" V8 is identified by code letters on front of engine block below right cylinder head.

### Engine Code

### Displ. & Carb.

FP, FR, (Fed) .....	231" V6 2-Bbl.
FS, (Calif) .....	231" V6 2-Bbl.
CJU, CJT, (Fed) .....	250" 6 Cyl. 1-Bbl.
CJL, (Calif) .....	250" 6 Cyl. 1-Bbl.
TE, TJ, TP, TT, (Calif) .....	260" V8 2-Bbl.
QK, QA, QD, QN, QE, QB, QC, QJ, QP, (Fed) .....	260" V8 2-Bbl.
RS, RT, (Fed) .....	350" V8 2-Bbl.
RW, RX, TL, TO, TY, TW, TU, TX, (Calif) .....	350" V8 4-Bbl.
QL, QD, RW, RX, QU, QX, (Fed) .....	350" V8 4-Bbl.
YH, (Fed) .....	400" V8 2-Bbl.
YM, YT, YL, (Fed) .....	400" V8 4-Bbl.
VB, VC, VE, VD, VP, (Calif) .....	455" V8 4-Bbl.
UB, UC, UE, UD, UP, (Fed) .....	455" V8 4-Bbl.

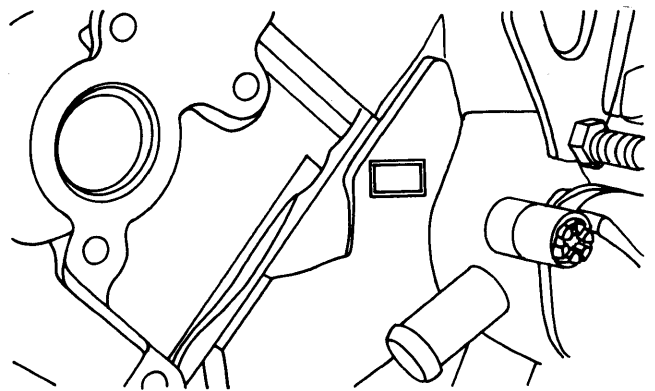
## Pontiac

### 1975 MODELS

**4 Cylinder Engine Code Location** — Code letters are stamped on a pad located at right side of cylinder block above starter.

**6 Cyl. Engine** — Code is stamped on distributor mounting pad on right side of engine.

**V8 Engines** — Code is located beneath engine production number on a machined pad on right hand bank of engine block.

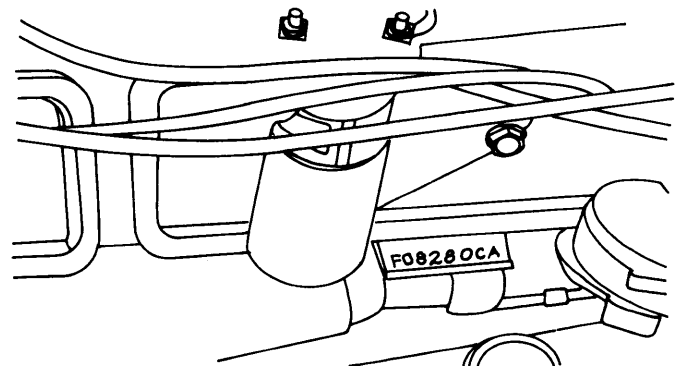


**V8 ENGINE CODE LOCATION**

### Engine Code

### Displ. & Carb.

BB, BC, (Fed) .....	140" 4 Cyl. 1-Bbl.
AS, AT, (Calif) .....	140" 4 Cyl. 2-Bbl.
AM, AR, (Fed) .....	140" 4 Cyl. 2-Bbl.
JU, JT, (Fed) .....	250" 6 Cyl. 1-Bbl.
JL, (Calif) .....	250" 6 Cyl. 1-Bbl.
QA, QD, QE, QJ, (Fed) .....	260" V8 2-Bbl.
TE, TJ, (Calif) .....	260" V8 2-Bbl.
RS, RI, YA, YB, (Fed) .....	350" V8 2-Bbl.
ZP, RO, RN, (Calif) .....	350" V8 4-Bbl.
RW, RX, YN, WN, (Fed) .....	350" V8 4-Bbl.
YH, (Fed) .....	400" V8 2-Bbl.
WT, YT, YM, YS, (Fed) .....	400" V8 4-Bbl.
ZT, (Calif) .....	400" V8 4-Bbl.
ZU, ZW, (Calif) .....	455" V8 4-Bbl.
YW, YU, (Fed) .....	455" V8 4-Bbl.



**6 CYL. ENGINE CODE LOCATION**