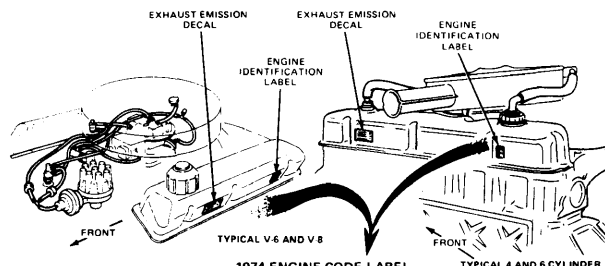
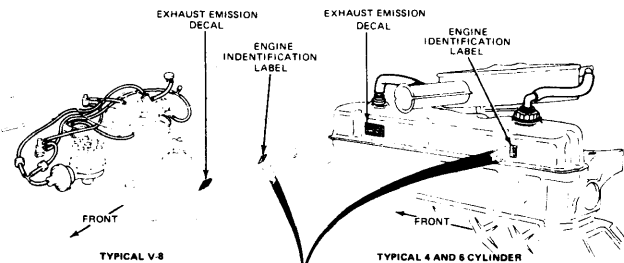


## FORD MOTOR CO. VACUUM DIAGRAMS

To find correct vacuum diagrams, refer to engine identification label (not colored exhaust emission decal). Label is located at rear of left rocker cover on V8 engines or left side rear on 6-

cylinder engines. Determine calibration and revision (see illustration). Using following table; match model, engine, transmission, calibration and revision level to determine illustration number of vacuum diagram to be used.



**1973 ENGINE CODE LABEL**

ENGINE IDENTIFICATION LABEL: K221A, 10-17, 3-17, R-14

**ENGINE: 400-2V CALIBRATION: 3-17**

Vehicle	Trans.	Axle Ratio	# 1 W	49S	Cal	49S A/C	Cal A/C
Ford Mercury Sedan	CB	2.75	5000	K221A	KK221A	K220AG	KK220AG
Torino Montego	CB	2.75	4500	K220A	KK220A	K220AG	KK220AG
Torino Montego S.W.	CB	2.75	5000	K220A	KK220A	K220AG	KK220AG
Mustang	CB	3.00	4500	K220A	KK220A	K220AG	KK220AG
Ford & Pass R.Wagon	CB	2.75	5000	K221A	KK221A	K220AG	KK220AG

Calibration Revision Level: R-6, R-15, R-14

3FOE1

**1974 ENGINE CODE LABEL IDENTIFICATION CHART**

POS. 1	50	49	CALIFORNIA	BASE	DESIGN LEVEL L	CALIB & REVISION LEVEL		
YR.	STATE	STATE	CODING	(DISPLACEMENT)	(VEHICLE APPLICATION)	(INERTIA WEIGHT)	(AXLE RATIO)	(TRANSMISSION)
0	0	A	L					
1	1	B	M					
2	2	C	N					
3	3	D	P					
4	4	E	R					
5	5	F	S					
6	6	G	T					
7	7	H	U					
8	8	I	V					
9	9	J	W					
		K	X					

Legend: A - AIR-CONDITIONING, B - NON AIR-CONDITIONING, C - INDUSTRIAL & MARINE, D - EXPORT, E - OVER 6000 LBS., F - THERMACTOR WITHOUT A/C, G - A/C OR NON A/C ENGINES, H - POWER STEERING, J - THERMACTOR WITH A/C, K - THERMACTOR A/C OR NON A/C

ENGINE BUILD DATE: 2 EK526LO T C14E R12 S7

3FOE2

1973 ENGINE CODE LABEL

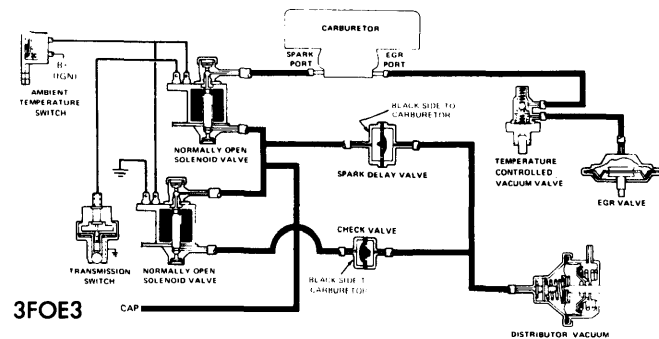
1974 ENGINE CODE LABEL

FORD VACUUM SYSTEM DIAGRAMS				
1973 Vehicles	Transmission	Calibration	Revision	Illus. No.
<b>240" 2-Bbl.</b> E100 (Van & C.W.) & E200 (Van Only) F100 Truck (4x2)	Man. Trans. Man. Trans.	3-51A 3-51D	R7,R8,R12 R14	3FOE3 3FOE4
<b>302" 2-Bbl.</b> Bronco E100 & E200 E100 & E200 F100 F100 F100 F100	Man. Trans. Man. Trans. Auto. Trans. Man. Trans. Man. Trans. Auto. Trans. Auto. Trans.	3-53A 3-53C 3-54C 3-53E 3-53E 3-54E 3-54E	R10,R15,R18 R3,R7 R3,R5,R8 R5,R6 R5,R6 R8 R8	3FOE5 3FOE6 3FOE6 3FOE7 3FOE8 3FOE9 3FOE10
<b>360" 2-Bbl.</b> F100 (4x2) 4650 GVW & Under F100 (4x2) 4650 GVW & Under F100 (4x2) 4650 GVW & Under F100 (4x2) 4650 GVW & Under F100 (4x2) 4800 GVW & Over F100 (4x2) 4800 GVW & Over	Auto. Trans. Auto. Trans. Auto. Trans. Auto. Trans. Auto. Trans. Auto. Trans.	3-56A 3-56A 3-56A 3-56A 3-56C 3-56C	R33,R36,R37 R40 R33,R36,R37 R40 R1,R3 R1,R3	3FOE11 3FOE11 3FOE12 3FOE12 3FOE11 3FOE12
<b>1974 Vehicles</b>				
<b>200" 1-Bbl.</b> Bronco	Man. Trans.	4-58A	R0	4FOE13

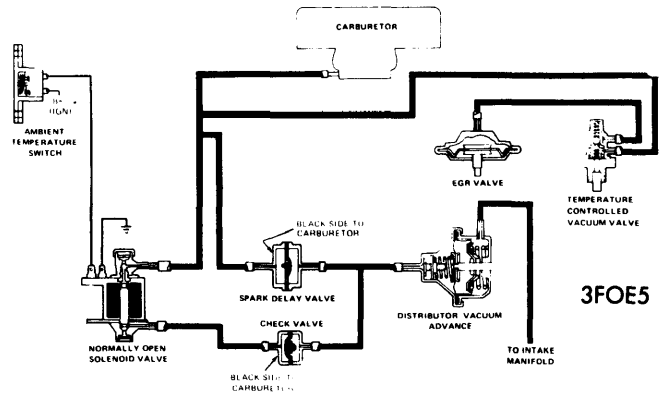
# Exhaust Emission Systems

## FORD MOTOR CO. VACUUM DIAGRAMS (Cont.)

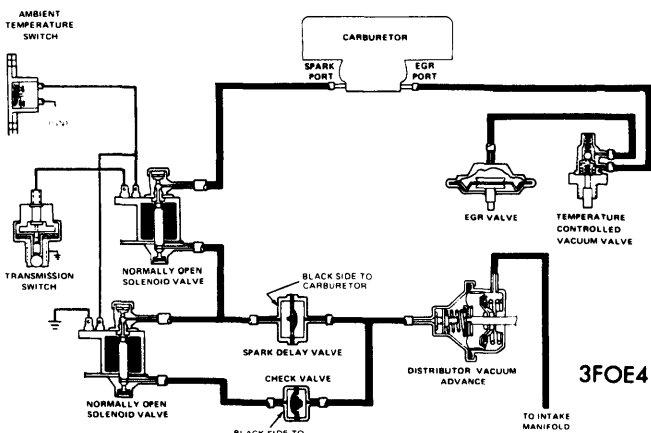
FORD VACUUM SYSTEM DIAGRAMS (Cont.)				
1974 Vehicles (Cont.)	Transmission	Calibration	Revision	Illus. No.
<b>240" 1-Bbl.</b> E100 Van C.W. & E200 Van C.W. (S.W.B. & L.W.B.) F100 (4x2) E200 Van, E200 C.W. & E300 C.W.	Man. Trans. Man. Trans. Auto. Trans.	4-51A 4-51D 4-52D	R1 R0 R0,R1	4FOE14 4FOE14 4FOE15
<b>300" 1-Bbl.</b> F100 (4x2) F100 (4x2) E100 E100 & E200	Man. Trans. Man. Trans. Man. Trans. Man. Trans.	4-51S 4-51T 4-51U 4-51V	R2 R13 R3 R3	4FOE16 4FOE16 4FOE16 4FOE16
<b>302" 2-Bbl.</b> E100 & E200 E300 C.W. E100 & E200 E100 & E200 E100 & E200 F100 E300 E100, E200 & E300 E100 E300 F100 F100 E100 & E200	Man. Trans. Man. Trans. Man. Trans. Man. Trans. Man. Trans. Auto. Trans. Auto. Trans. Auto. Trans. Auto. Trans. Auto. Trans. Auto. Trans. Auto. Trans. Auto. Trans. Auto. Trans.	4-53C 4-53H 4-53J 4-53T 4-54C 4-54E 4-54F 4-54G 4-54H 4-54J 4-54T 4-54V 4-54W	R0 R0 R0 R1 R0 R0 R0 R0 R0 R0 R2 R2 R12	4FOE17 4FOE18 4FOE19 4FOE20 4FOE21 4FOE22 4FOE21 4FOE21 4FOE23 4FOE21 4FOE24 4FOE24 4FOE25
<b>390" 2-Bbl.</b> F100 (4x2)	Auto. Trans.	4-57B	R2	4FOE26



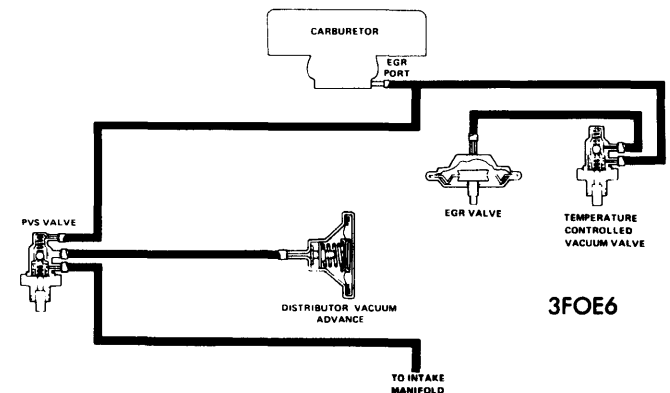
1973 E100 (VAN & C.W.) & E200 (VAN)



1973 BRONCO



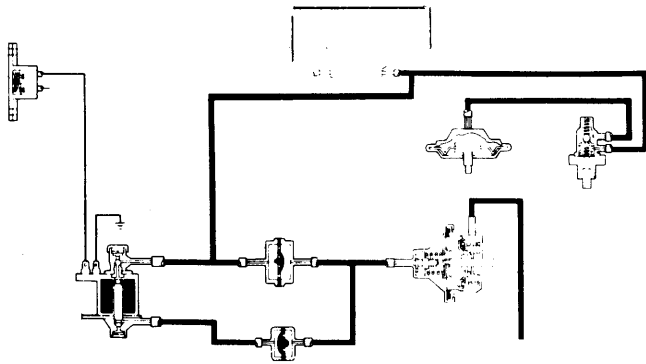
1973 F100 TRUCK (4x2)



1973 E100 & E200

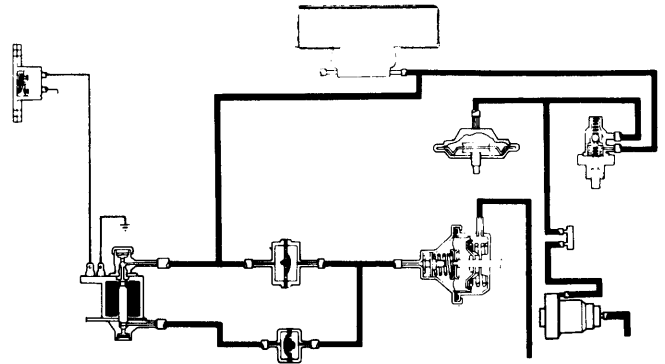
# Exhaust Emission Systems

## FORD MOTOR CO. VACUUM DIAGRAMS (Cont.)



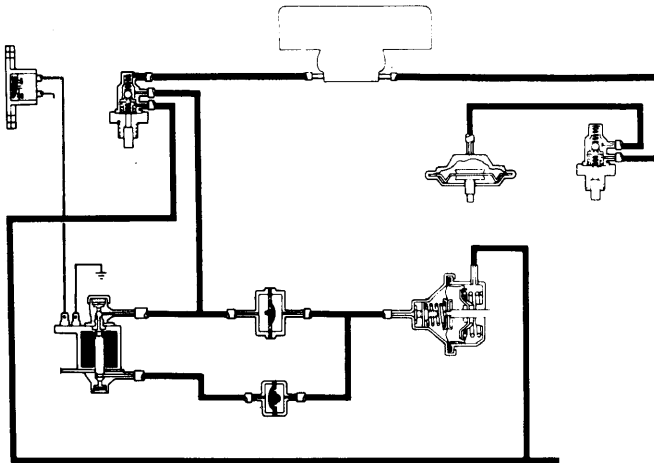
3FOE7

1973 F100 NON A/C



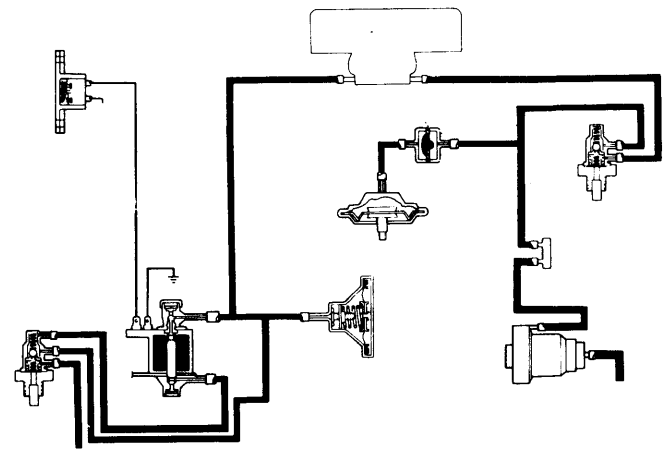
3FOE10

1973 F100 NON A/C



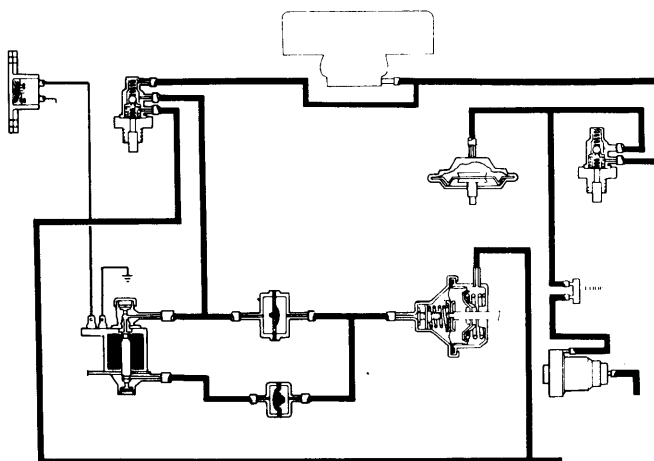
3FOE8

1973 F100 A/C



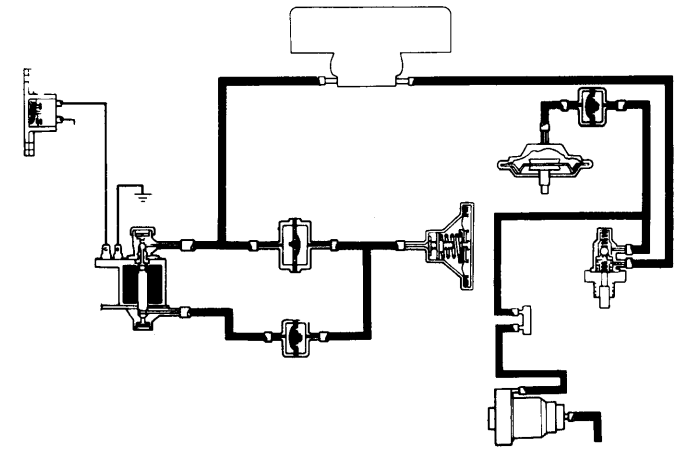
3FOE11

1973 F100 (4x2) A/C



3FOE9

1973 F100 A/C

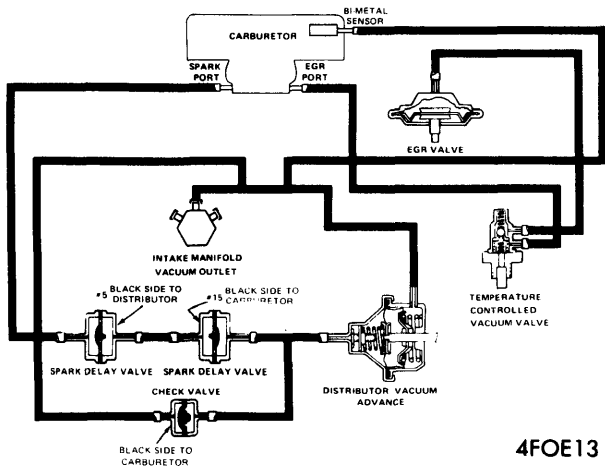


3FOE12

1973 F100 (4x2) NON A/C

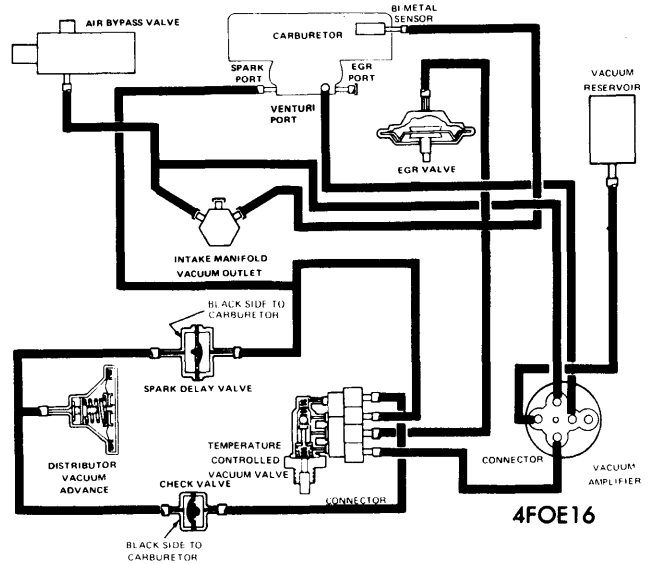
# Exhaust Emission Systems

## FORD MOTOR CO. VACUUM DIAGRAMS (Cont.)



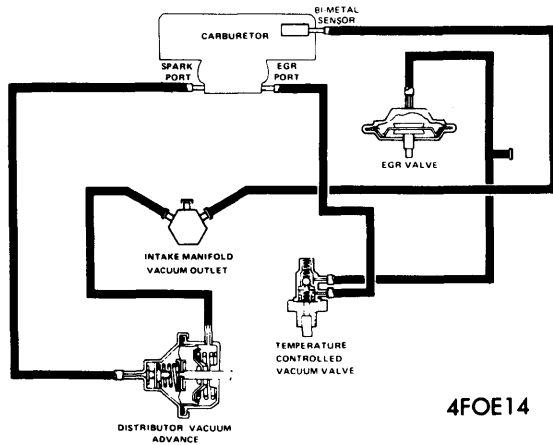
1974 BRONCO

4FOE13



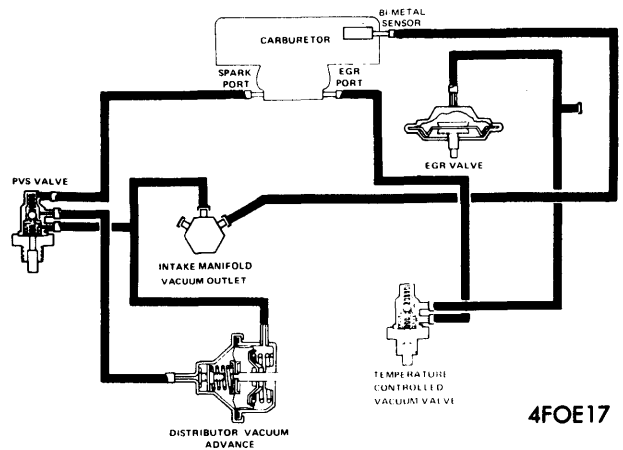
1974 F100 (4x2), E100 C.W. & E200 C.W.

4FOE16



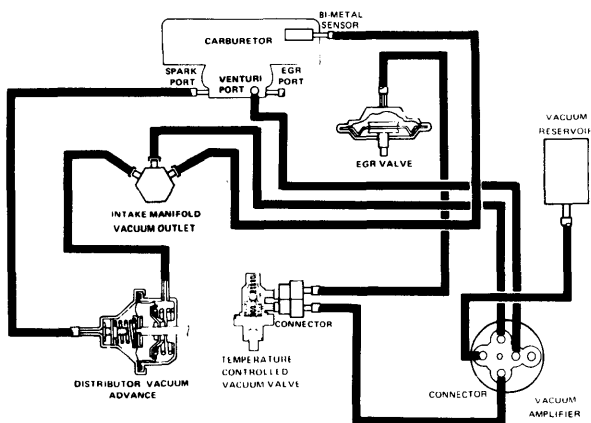
1974 VAN C.W., E200 VAN C.W. (S.W.B. & L.W.B.) & F100 (4x2)

4FOE14



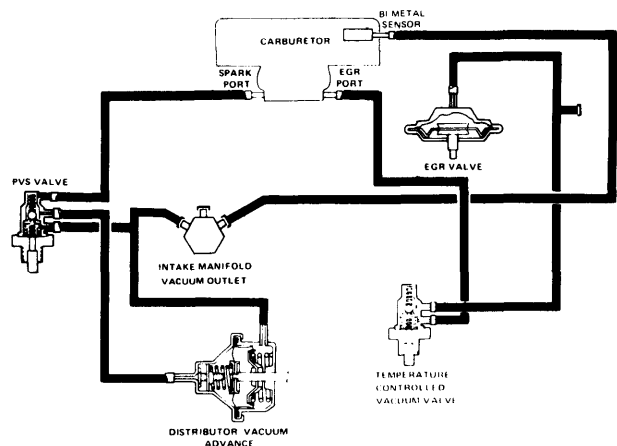
1974 E100 & E200 A/C

4FOE17



4FOE15

1974 E200 VAN, E200 C.W. & E300 C.W.

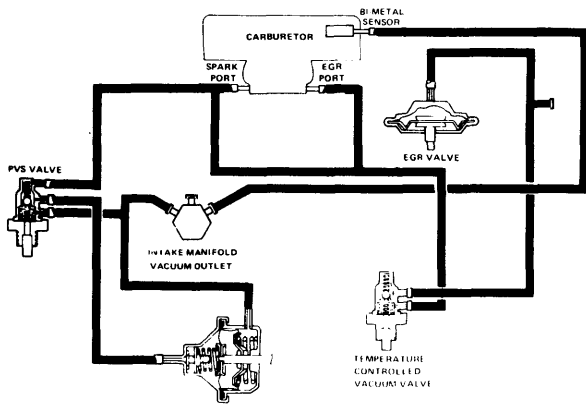


4FOE18

1974 E300 C.W. A/C

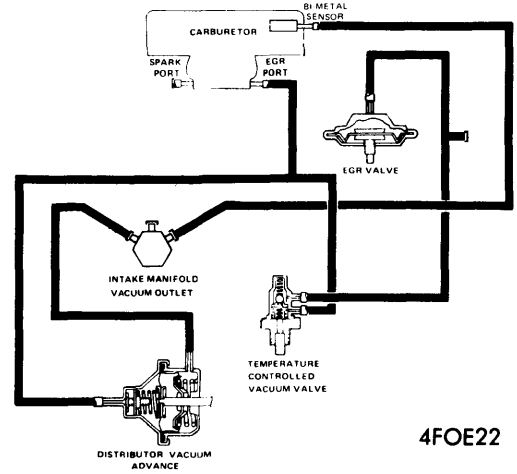
# Exhaust Emission Systems

## FORD MOTOR CO. VACUUM DIAGRAMS (Cont.)



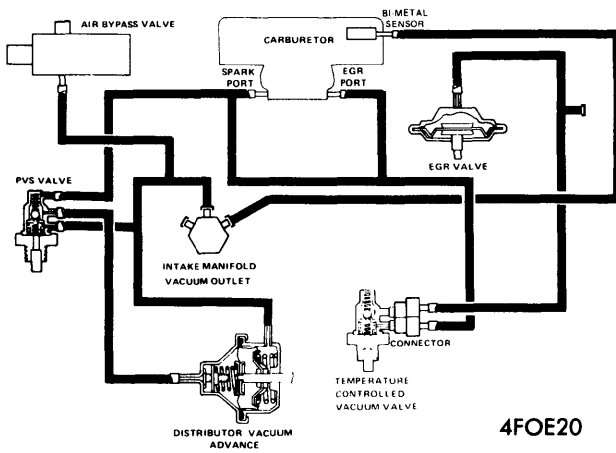
4FOE19

1974 E100 & E200 A/C



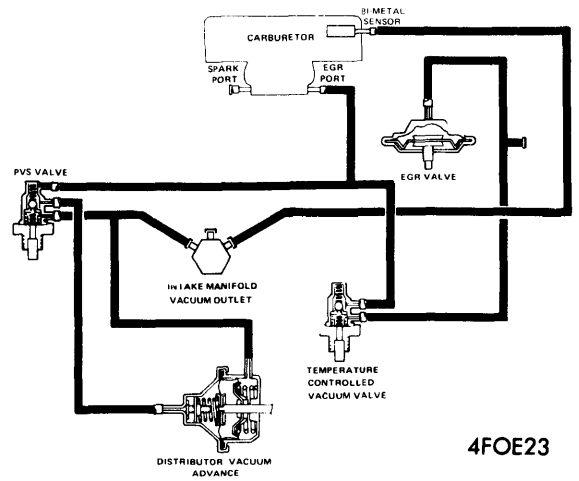
4FOE22

1974 F100 NON A/C



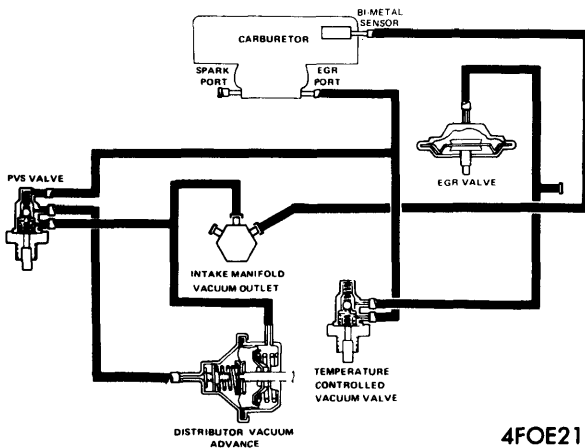
4FOE20

1974 E100 & E200 A/C



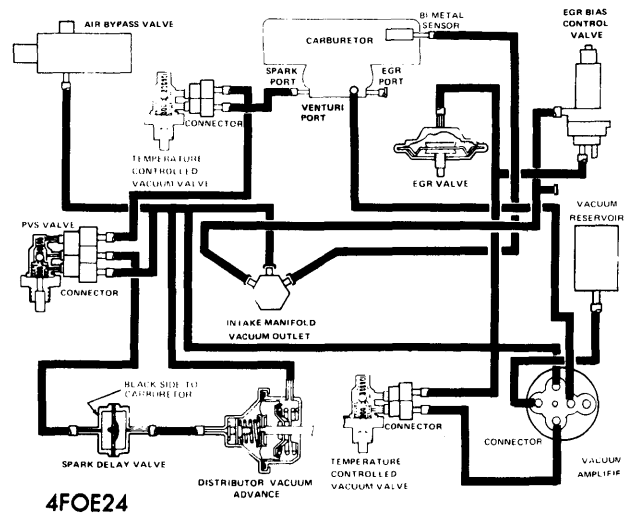
4FOE23

1974 E100 A/C



4FOE21

1974 E100, E200 & E300

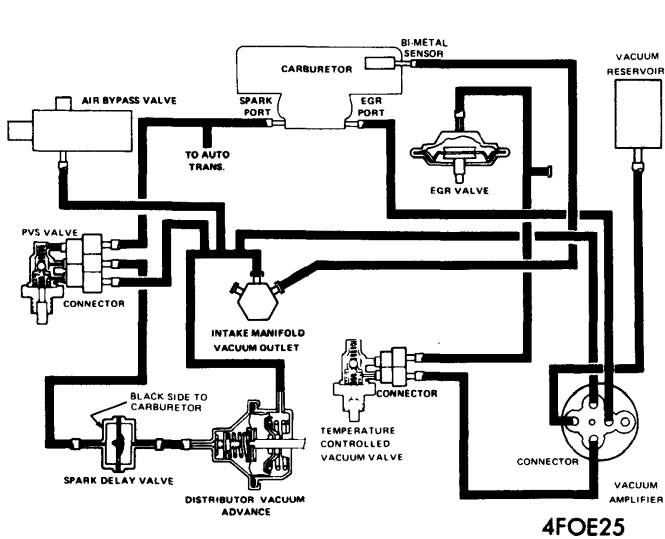


4FOE24

1974 F100 A/C

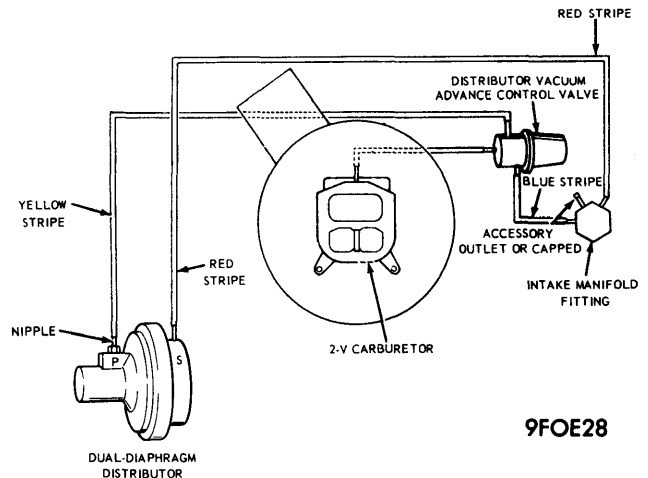
# Exhaust Emission Systems

## FORD MOTOR CO. VACUUM DIAGRAMS (Cont.)



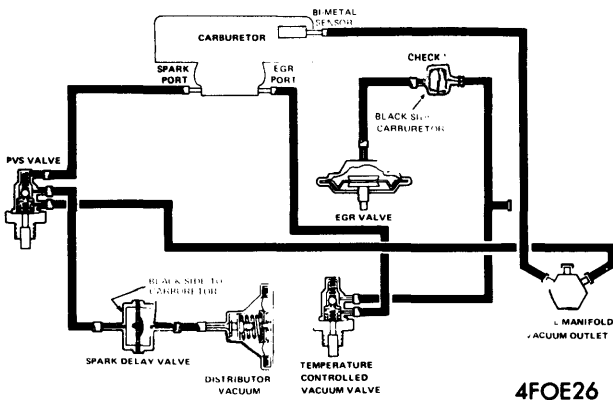
1974 E100 & E200

4FOE25



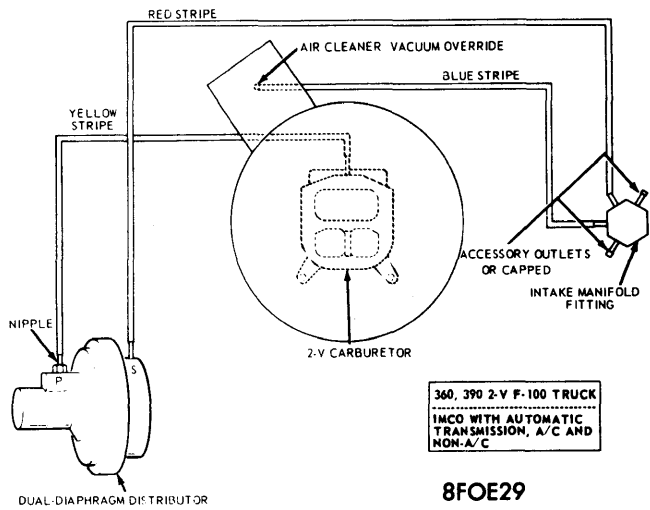
1969 IGNITION VACUUM SCHEMATIC WITH IMCO (302" V8)

9FOE28



1974 F100 (4x2) A/C

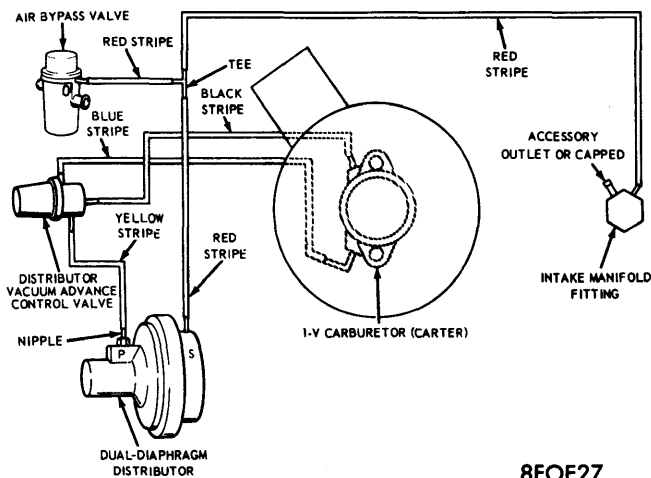
4FOE26



1968 IGNITION VACUUM SCHEMATIC WITH IMCO (360" & 390" V8)

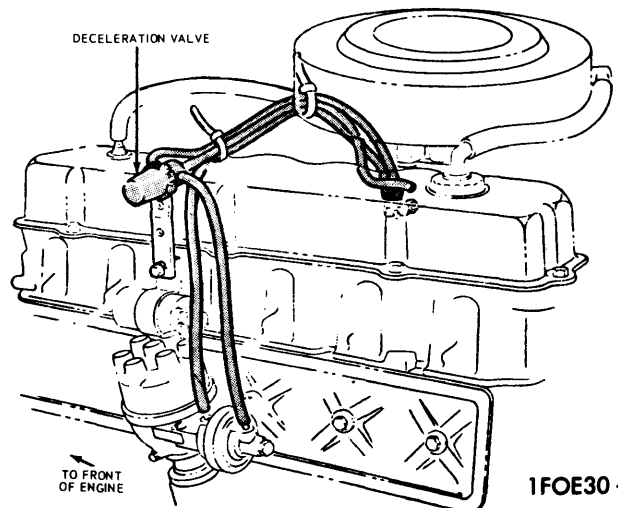
360, 390 2-V F-100 TRUCK  
IMCO WITH AUTOMATIC TRANSMISSION, A/C AND NON-A/C

8FOE29



1968 IGNITION VACUUM SCHEMATIC WITH THERMACTOR (240" 6 CYL.)

8FOE27



1971 DECELERATION VALVE INSTALLATION (6 CYL. TYPICAL)

1FOE30