

## 1968-69 FORD MOTOR CO. VACUUM DIAGRAMS

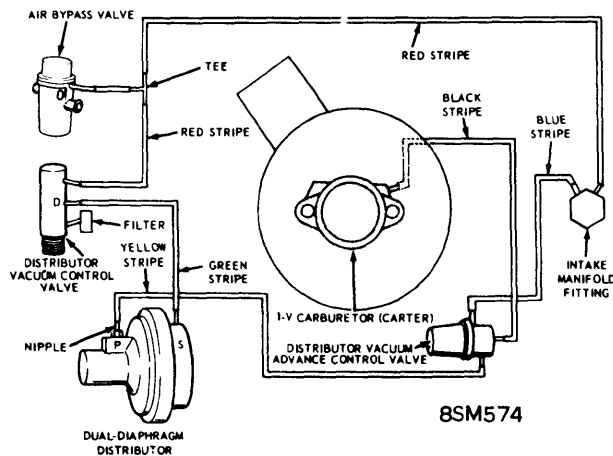
### DESCRIPTION

Vacuum Control Valves (Temperature Sensing) and Vacuum Advance Control Valves are used on some 1968 and later Ford Motor Co. Engines to control operation of the distributor vacuum advance control unit under special operating conditions such as abnormal temperatures caused by prolonged idling or momentary over-rich mixtures during deceleration. See preceding pages for complete description and testing procedures for these units.

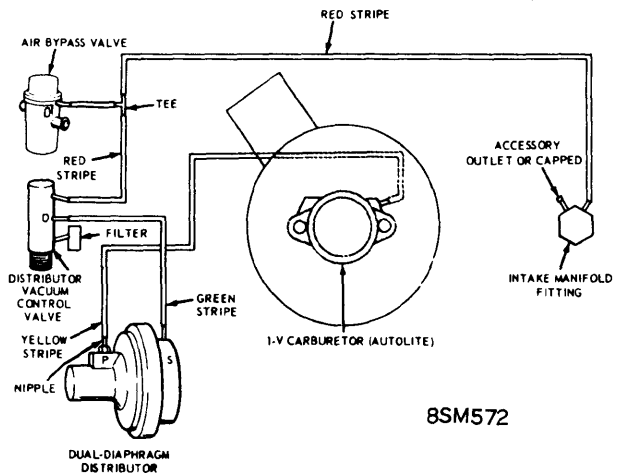
### VACUUM UNIT CONNECTIONS

Vacuum control valves are connected differently on the various engines. Refer to the Vacuum Diagrams shown below and on the following pages for connections for each engine with or without these special controls.

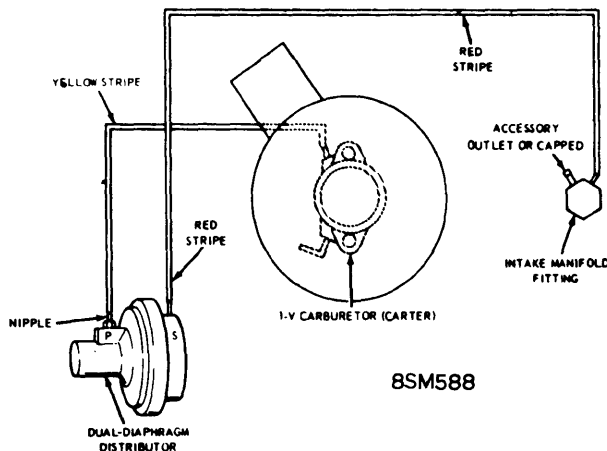
**NOTE** - Additional vacuum lines are also used for other controls, such as Vacuum Override (Thermostatic Air Cleaner control) and Bypass Valve (Air Injection Control on Thermactor Engines), and these lines are also shown on the vacuum diagrams.



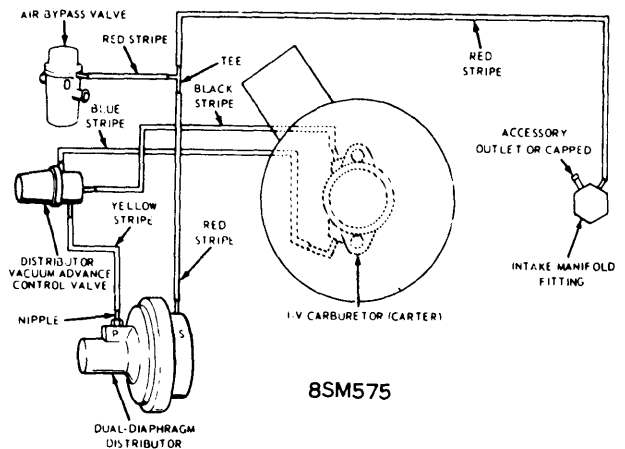
1968-170" THERMACTOR EMISSION, MAN. TRANS.  
1969-170" IMCO EMISSION



1968-170" & 200" IMCO EMISSION, AUTO. TRANS.,  
W/O A/C  
1968-200" THERMACTOR EMISSION, MAN. TRANS.  
1969-170" & 200" IMCO EMISSION, ALL TRANS.



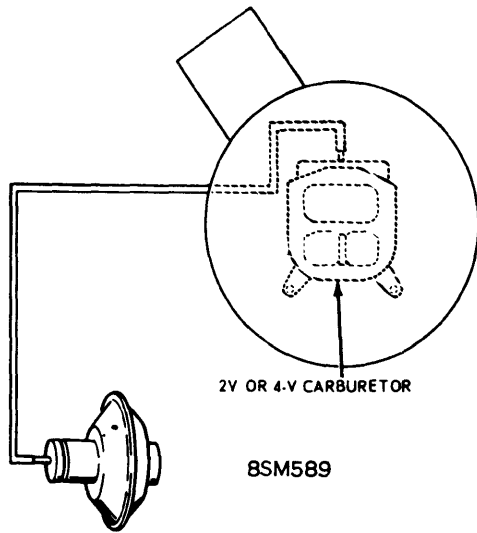
1968-69-240" IMCO EMISSION, ALL TRANS.  
1969-302" 2 BBL. MAN. TRANS., W/O A/C



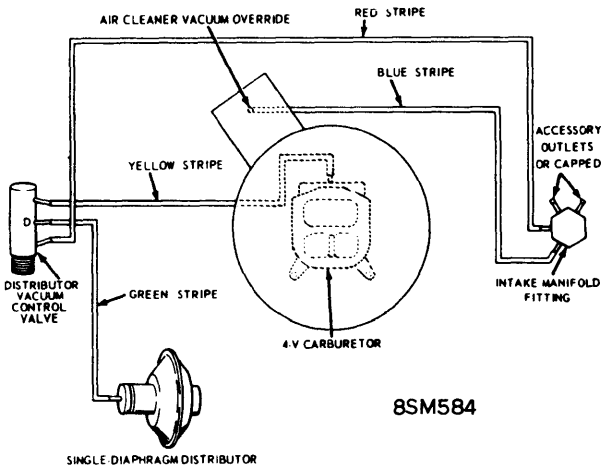
1968-240" THERMACTOR EMISSION

# Exhaust Emission Systems

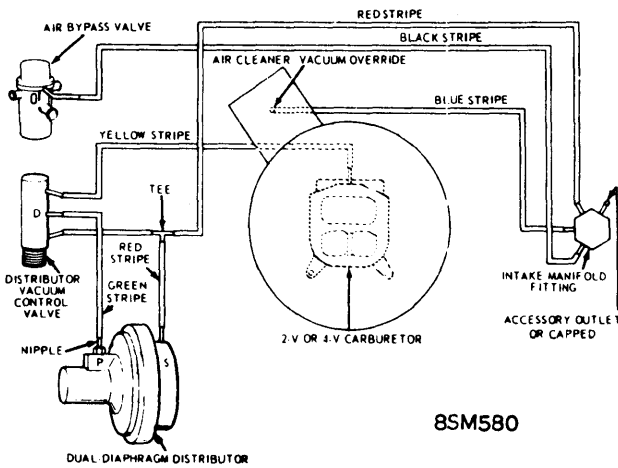
## 1968-69 FORD MOTOR CO. VACUUM DIAGRAMS (Cont.)



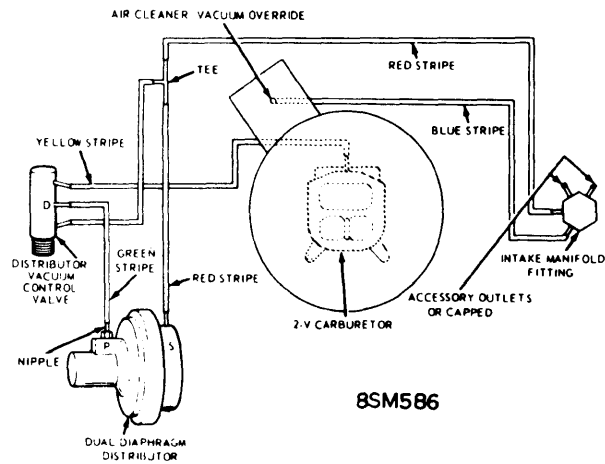
1969-250" & 302" AUTO. TRANS., W/O A/C, (FAIRLANE, MONTEGO, MUSTANG)  
1969-351" 2-4 BBL W/O A/C



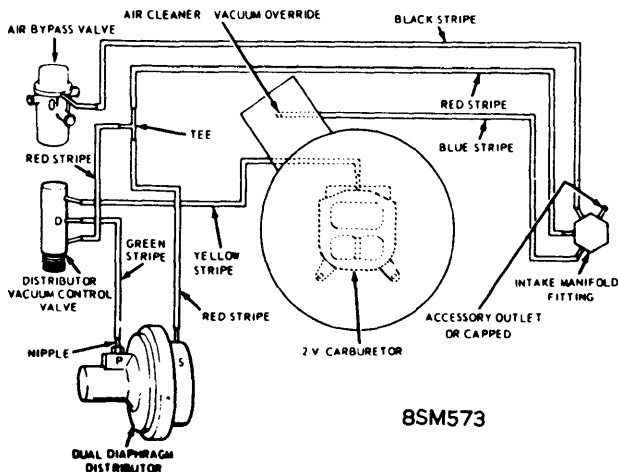
1968-302" 4 BBL. IMCO EMISSION, AUTO. TRANS., A/C (OPT), EXCEPT FALCON  
1969-250" 1 BBL. IMCO EMISSION WITH A/C



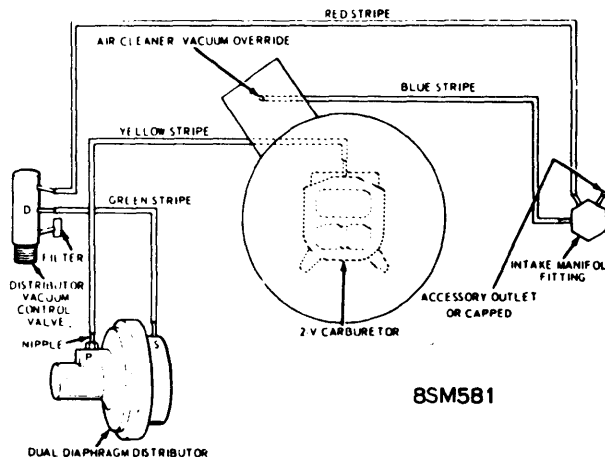
1968-289"-302" IMCO EMISSION, AUTO. TRANS., WITH A/C  
1968-289"-302" THERMACTOR EMISSION, MAN. TRANS., A/C (OPT)  
1968-390" 2-4 Bbl. THERMACTOR EMISSION



1968-289" & 302" 2 BBL. IMCO EMISSION, AUTO. TRANS., WITH A/C



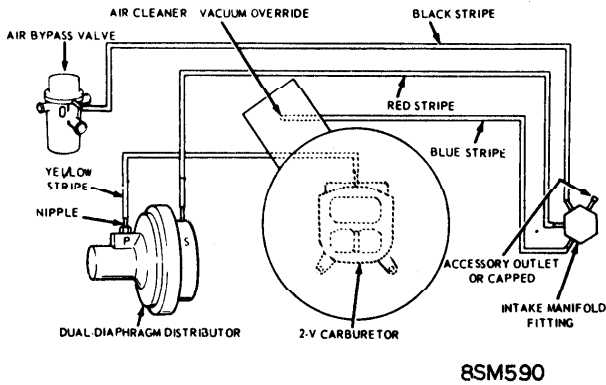
1968-302" IMCO & THERMACTOR EMISSION WITH A/C



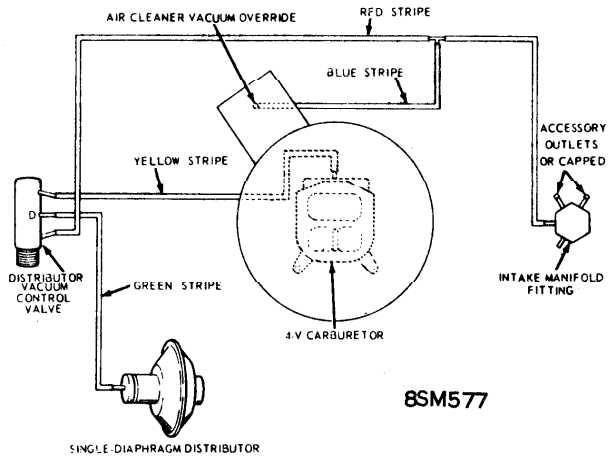
1968-289" & 302" 2 BBL IMCO EMISSION, AUTO. TRANS.  
1968-390" 2 BBL. (PREMIUM FUEL) IMCO EMISSION

# Exhaust Emission Systems

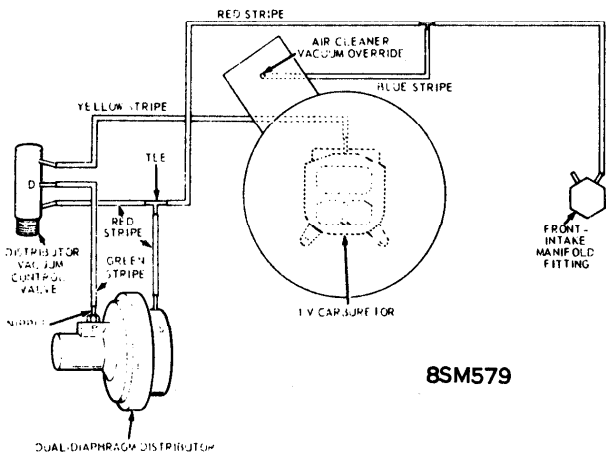
## 1968-69 FORD MOTOR CO. VACUUM DIAGRAMS (Cont.)



1968-302" THERMACTOR EMISSION

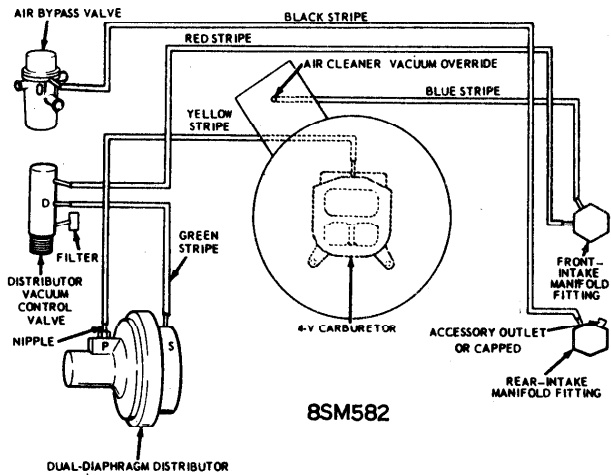


8SM577



8SM579

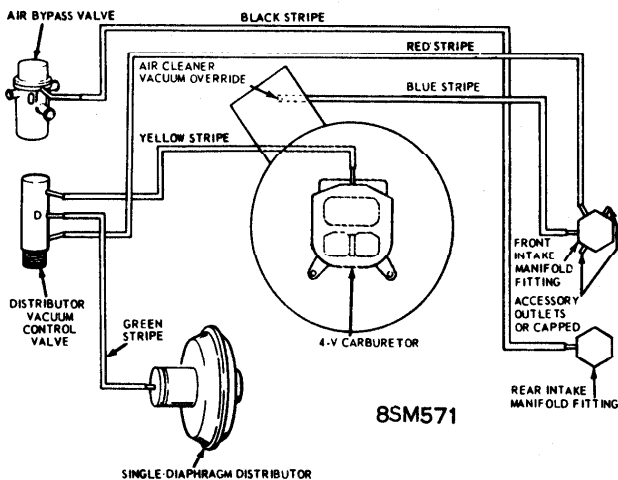
1969-302" 4 BBL. IMCO EMISSION (EXCEPT FAIRLANE)  
1969-390" 4 BBL. (IMP. PERF.) IMCO EMISSION, AUTO. TRANS.



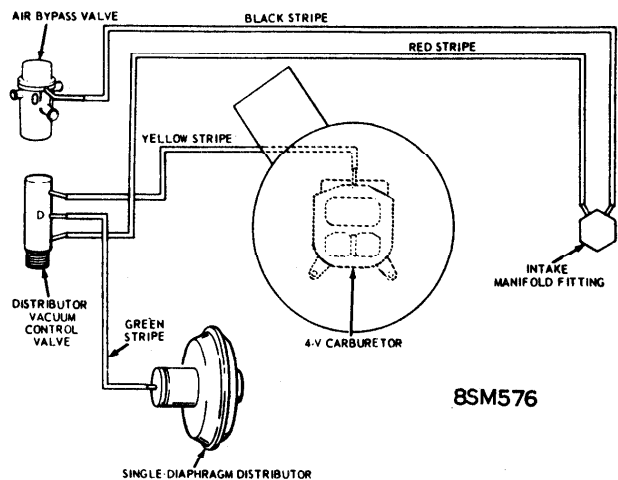
8SM582

1969-390" 4 BBL. (IMP. PERF.) IMCO EMISSION, MAN. TRANS.

1968-390" 4 BBL. (GT) THERMACTOR EMISSION, AUTO. TRANS. (EXCEPT FALCON)



8SM571



8SM576

1968-390" 2 BBL. (PREMIUM FUEL) IMCO EMISSION  
MERCURY, COUGAR, WITH A/C  
1969-428" COBRA JET THERMACTOR EMISSION,  
AUTO. TRANS.

1968-390" & 428" 2-4 BBL. IMCO EMISSION  
1968-428" 4 BBL. THERMACTOR EMISSION  
1969-428" POLICE INTERCEPTOR

