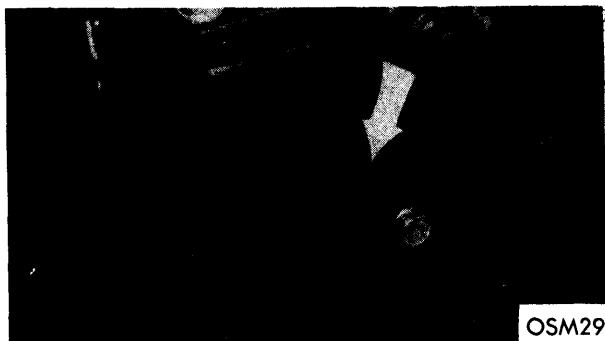


JEEP

1970-71 ENGINES

F4 134" Engine — Engine identification number consists of a prefix followed by a 5 or 6 digit serial number and is stamped on water pump boss at front of engine.



F4 ENGINE NUMBER

V6 225" Engine — Engine code number is stamped on right front face of crankcase, just below rocker arm cover.



V6 ENGINE NUMBER

232" 6-Cyl. Engine — Engine code number is located on a machined pad adjacent to distributor. The letter "L" contained in the code number, denotes 232" engine.



232" & 258" 6-CYL. ENGINE NUMBER

350" V8 Engine — Engine code number is stamped on a machined pad on front face of cylinder block left bank just below cylinder head.



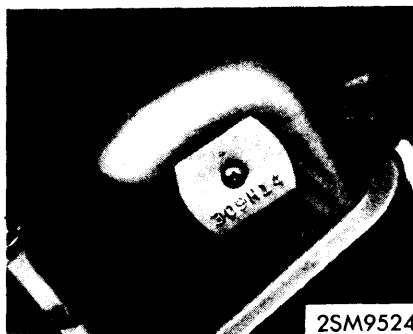
350" V8 ENGINE NUMBER

Engine Code	Displ. & Carb.	Comp. Ratio
A	258" 6 1-Bbl.	8.0-1
B	258" 6 1-Bbl.	7.6-1
E	232" 6 1-Bbl.	8.0-1
F	232" 6 1-Bbl.	7.5-1
H	304" V8 2-Bbl.	8.4-1
N	360" V8 2-Bbl.	8.5-1

1972 ENGINES

232" & 258" 6-Cyl. Engine — Engine code is located on a machined pad between number two and three cylinders.

304" & 360" V8 Engine — Engine code is located on a tag attached to right bank cylinder head cover.



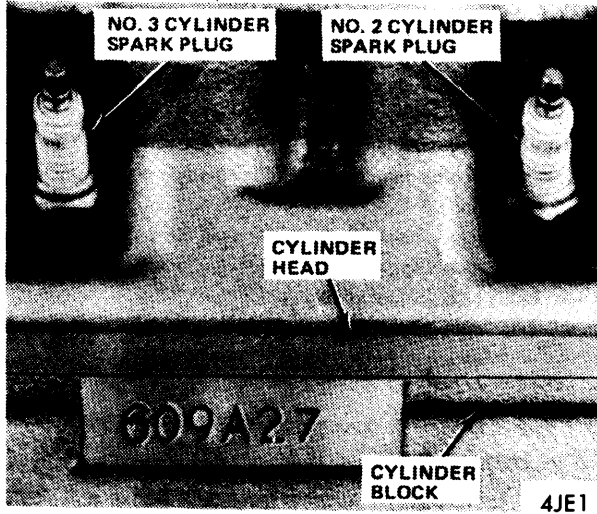
304" & 360" V8 ENGINE NUMBER

Engine Identification

JEEP (Cont.)

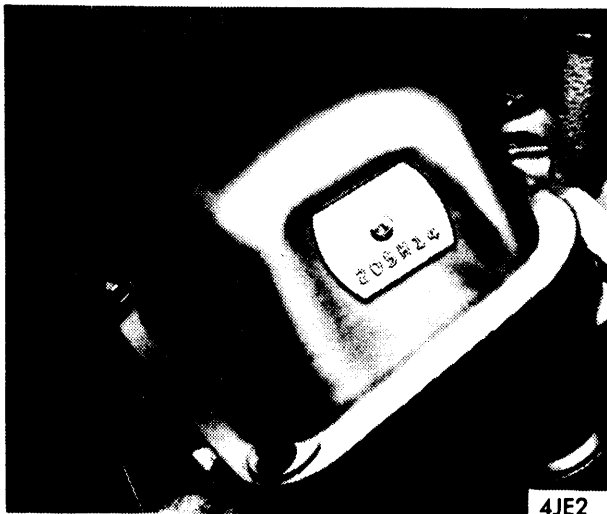
1973 MODELS

232" & 258" 6 Cyl. Engine – Engine code is located on a machined surface of engine block between number two and three cylinders.



6 CYL. ENGINE CODE LOCATION

304" & 360" V8 Engine – Engine code is located on a tag which is attached to right bank cylinder head cover.

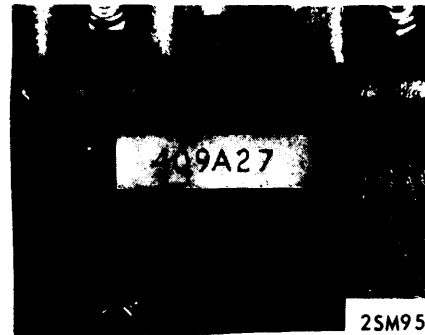


V8 ENGINE CODE LOCATION

Engine Code	Displ. & Carb.	Compr. Ratio
A.....	258" 6 1-Bbl.	8.0-1
B.....	258" 6 1-Bbl.	7.6-1
E.....	232" 6 1-Bbl.	8.0-1
F.....	232" 6 1-Bbl.	7.5-1
H.....	304" V8 2-Bbl.	8.4-1
N.....	360" V8 2-Bbl.	8.5-1
P.....	360" V8 4-Bbl.	8.5-1

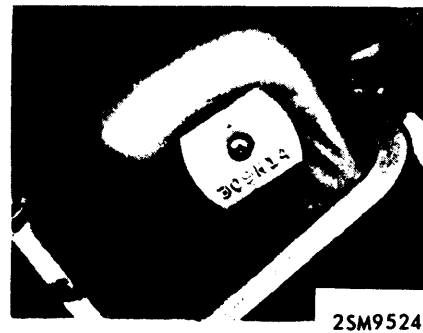
1974 MODELS

232" & 258" 6 Cyl. Engine – The engine code is located on a machined surface of the block between number two and three cylinders.



6 CYLINDER ENGINE CODE LOCATION

304" & 360" V8 Engine – The engine code is located on a tag which is attached to the right bank cylinder head cover.



V8 ENGINE CODE LOCATION

Engine Code	Displ. & Carb.	Compr. Ratio
A.....	258" 6 1-Bbl.	8.0-1
E.....	232" 6 1-Bbl.	8.0-1
H.....	304" V8 2-Bbl.	8.4-1
N.....	360" V8 2-Bbl.	8.25-1
P.....	360" V8 4-Bbl.	8.25-1
Z.....	401" V8 4-Bbl.	8.35-1