

Engine Identification

FORD MOTOR CO.

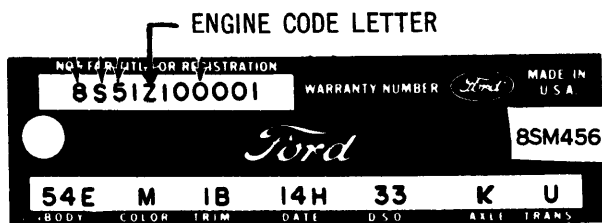
1966-67 MODELS

Engine Code Location - Engine code letter (or number designating low compression engines) is fifth digit in eleven-digit vehicle warranty number stamped on plate on rear face of left front door (second line on plate in 1966, top line on plate in 1967). **NOTE** - For official title and registration purposes, this number is stamped on top upper flange of left fender apron, on top surface of radiator and front fender apron support, on tab attached to top weld flange of dash panel, or other location in engine compartment.

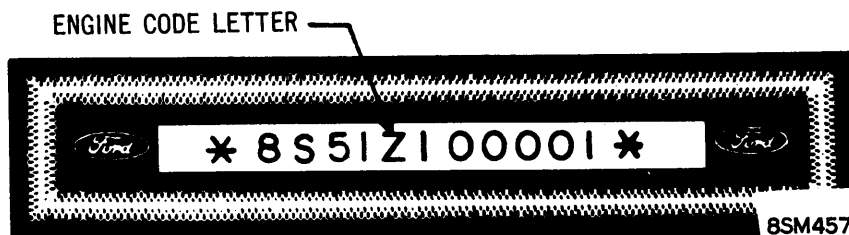
Engine Displacement - Indicated by first entry on top line of tag on intake manifold at ignition coil or temperature gauge engine unit. **NOTE** - Other entries on tag indicate model year, change level, year and month of production, and engine code designation for parts change identification.

Engine Code	Displ. & Carb.	Comp. Ratio
U	170" 6 I Bbl.	9.1:1
4	170" 6 I Bbl.	Low
T	200" 6 I Bbl.	9.2:1
2	200" 6 I Bbl.	Low
B, V, E	240" 6 I Bbl.	9.2:1
5	240" 6 I Bbl.	Low
C	289" V8 2 Bbl.	9.3:1
A	289" V8 4 Bbl.	10.0:1
K	289" V8 4 Bbl. Hi-Perf.	10.5:1
X ^①	352" V8 4 Bbl.	9.3:1
H, Y	390" V8 2 Bbl.	9.5:1
Z	390" V8 4 Bbl.	10.5:1
M	410" V8 4 Bbl.	10.5:1
L, W	427" V8 4 Bbl. Hi-Perf.	11.1:1
D, R	427" V8 2-4 Bbl. Hi-Perf.	11.1:1
Q	428" V8 4 Bbl.	10.5:1
8	428" V8 4 Bbl.	Low
P	428" V8 4 Bbl. Police	11.1:1
G	462" V8 4 Bbl.	10.25:1

① - 1966 only.



FORD MOTOR CO. WARRANTY PLATE
(ON LEFT FRONT DOOR)



FORD MOTOR CO. IDENTIFICATION PLATE
(TOP OF INSTRUMENT PANEL)

1968-69 MODELS

Engine Code Location - Engine Code Letter (or number designating low compression engines) is fifth digit in eleven-digit vehicle warranty number stamped on plate on rear face of left front door (top line on plate) and also on aluminum tab riveted on top of instrument panel near windshield on passenger side of car and visible from outside. **NOTE** - This aluminum tab number is used for official title and registration purposes.

Engine Displacement - Indicated by first entry on top line of tag on intake manifold at ignition coil or temperature gauge engine unit. **NOTE** - Other entries on tag indicate model year, change level, year and month of production and engine code designation for parts change identification.

Engine Code	Displ. & Carb.	Comp. Ratio
U	170" 6 I Bbl.	9.1:1
T	200" 6 I Bbl.	9.2:1
2	200" 6 I Bbl.	Low
V, B ^③ , E ^④	240" 6 I Bbl.	9.2:1
5	240" 6 I Bbl.	Low
L ^②	250" 6 I Bbl.	9.0:1
3 ^②	250" 6 I Bbl.	Low
C ^①	289" V8 2 Bbl.	9.3:1
F, D ^⑤	302" V8 2 Bbl.	9.5:1
6	302" V8 2 Bbl.	Low
J	302" V8 4 Bbl.	10.5:1
H ^②	351" V8 2 Bbl.	9.5:1
M ^②	351" V8 4 Bbl.	10.7:1
Y	390" V8 2 Bbl. Reg. Fuel	9.5:1
X	390" V8 2 Bbl. Prem. Fuel	10.5:1
S, Z	390" V8 4 Bbl. Imprvd. Perf.	10.5:1
W ^①	427" V8 4 Bbl. High Perf.	10.9:1
Q, R	428" V8 4 Bbl. Cobra Jet	10.5:1
P	428" V8 4 Bbl. Police	10.5:1
8	428" V8 4 Bbl.	Low
K ^②	429" V8 2 Bbl.	10.5:1
N	429" V8 4 Bbl.	10.5:1
A ^②	460" V8 4 Bbl.	10.5:1
G ^①	462" V8 4 Bbl.	10.5:1

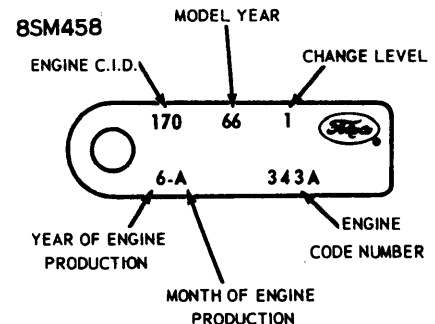
① - 1968 only.

② - 1969 only.

③ - Police Cars.

④ - Taxicabs.

⑤ - Police Cars & Taxicabs.



FORD MOTOR CO. ENGINE TAG

Engine Identification

FORD MOTOR CO. (Cont.)

1970 MODELS

Engine Code Location - Engine Code Letter (Number for Low Compression) is fifth digit in eleven-digit vehicle warranty number stamped on Vehicle Certification Label attached to rear face of driver's door. This number is same as Vehicle Identification Number stamped on aluminum tab riveted on instrument panel close to windshield on driver's side of car.

Engine Displacement - Indicated by first entry on top line of engine identification tag attached to engine.

Engine Code	Displ. & Carb.	Comp. Ratio
U	170" 6 1-Bbl.	9.1:1
T	200" 6 1-Bbl.	8.1:1
2	200" 6 1-Bbl.	Low
V, BⓄ, EⓄ	240" 6 1-Bbl.	9.2:1
5	240" 6 1-Bbl.	Low
L	250" 6-1-Bbl.	9.1:1
3	250" 6 1-Bbl.	Low
F, DⓄ	302" V8 2-Bbl.	9.5:1
6	302" V8 2-Bbl.	Low
G	302" V8 4-Bbl. BOSS	10.5:1
H	351" V8 2-Bbl.	9.5:1
M	351" V8 4-Bbl.	11.0:1
Y	390" V8 2-Bbl.	9.5:1
PⓄ	428" V8 4-Bbl. Prem. Fuel	10.5:1
Q, RⓄ	428" V8 4-Bbl. CJ	10.6:1
K	429" V8 2-Bbl.	10.5:1
N	429" V8 4-Bbl.	11.0:1
C, JⓄ	429" V8 4-Bbl. CJ	11.5:1
Z	429" V8 4-Bbl. BOSS	10.5:1
A	460" V8 4-Bbl.	10.5:1

Ⓞ - Police Cars. Ⓞ - Taxicabs. Ⓞ - Ram Air Induction.

1971 MODELS

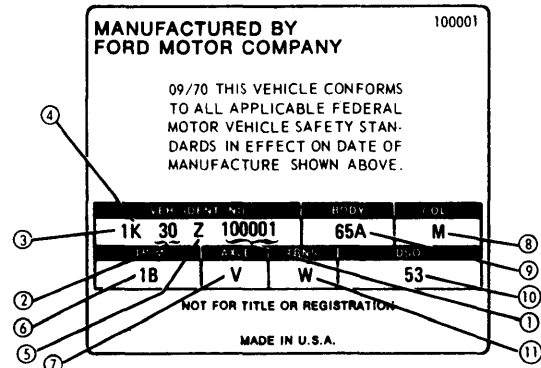
Engine Code Location - Engine code letter (or number designating low compression engines) is fifth digit in eleven digit vehicle identification number stamped on a plate on rear face of drivers door. Vehicle Identification Number also appears on a metal tab riveted to instrument panel, close to windshield on drivers side of car and is visible from outside. **NOTE** - This identification number is used for official title and registration purposes.

Engine Displacement - Indicated by first entry on top line of tag on intake manifold at ignition coil or temperature gauge engine unit. **NOTE** - This tag is not found on Pinto Models.

Engine Code	Displ. & Carb.	Comp. Ratio
W	1600 cc. 4 1-Bbl.	8.0-1
X	2000 cc. 4 2-Bbl.	8.6-1
U	170" 6 1-Bbl.	8.7-1
T	200" 6 1-Bbl.	8.7-1
2	200" 6 1-Bbl.	Ⓞ
L	250" 6 1-Bbl.	9.0-1
3	250" 6 1-Bbl.	Ⓞ
V	240" 6 1-Bbl.	8.9-1
BⓄ	240" 6 1-Bbl.	9.0-1
EⓄ	240" 6 1-Bbl.	9.0-1
F	302" V8 2-Bbl.	9.0-1
6	302" V8 2-Bbl.	Ⓞ
DⓄ	302" V8 2-Bbl.	9.0-1
G	302" V8 4-Bbl. BOSS	9.4-1
H	351" V8 2-Bbl.	9.0-1
M	351" V8 4-Bbl.	10.7-1
Q	351" V8 4-Bbl. GT	11.7-1
Y	390" V8 2-Bbl.	8.6-1
S	400" V8 2-Bbl.	9.0-1
K	429" V8 2-Bbl.	10.5-1

Engine Code	Displ. & Carb.	Comp. Ratio
N	429" V8 4-Bbl.	10.5-1
C	429" V8 4-Bbl. Cobra Jet	11.3-1
J	429" V8 4-Bbl. Spr. Cobra Jet	11.5-1
PⓄ	429" V8 4-Bbl.	11.3-1
A	460" V8 4-Bbl.	10.2-1

- Ⓞ - Low Compression for Export.
- Ⓞ - Police.
- Ⓞ - Taxi.



- 1 CONSECUTIVE UNIT NO.
- 2 BODY SERIAL CODE
- 3 MODEL YEAR CODE
- 4 ASSEMBLY PLANT CODE
- 5 ENGINE CODE
- 6 TRIM CODE
- 7 REAR AXLE CODE
- 8 COLOR CODE
- 9 BODY TYPE CODE
- 10 DIST. SPEC. EQUIP. CODE
- 11 TRANSMISSION CODE

1971 FORD MOTOR CO. VEHICLE CERTIFICATION LABEL

1972 MODELS

Engine Code Location - Engine code letter (or number designating low compression engines) is fifth digit in eleven digit vehicle identification number stamped on a plate on rear face of drivers door. Vehicle Identification Number also appears on a metal tab riveted to instrument panel, close to windshield on drivers side of car and is visible from outside. **NOTE** - This identification number is used for official title and registration purposes.

Engine Displacement - Indicated by first entry on top line of tag on intake manifold at ignition coil or temperature gauge engine unit. **NOTE** - This tag is not found on Pinto Models.

Engine Code	Displ. & Carb.	Comp. Ratio
W	1600 cc 4 1-Bbl.	8.0-1
X	2000 cc 4 2-Bbl.	8.6-1
U	170" 6 1-Bbl.	8.7-1
T	200" 6 1-Bbl.	8.7-1
2	200" 6 1-Bbl.	Ⓞ
L	250" 6 1-Bbl.	9.0-1
3	250" 6 1-Bbl.	Ⓞ
V	240" 6 1-Bbl.	8.9-1
BⓄ	240" 6 1-Bbl.	9.0-1
EⓄ	240" 6 1-Bbl.	9.0-1
F	302" V8 2-Bbl.	9.0-1
6	302" V8 2-Bbl.	Ⓞ
DⓄ	302" V8 2-Bbl.	9.0-1
H	302" V8 2-Bbl.	8.6-1
Q	351" V8 4-Bbl. CJ	8.6-1
R	351" V8 4-Bbl. HQ	8.8-1
S	400" V8 2-Bbl.	8.4-1
N	429" V8 4-Bbl.	8.5-1
PⓄ	429" V8 4-Bbl.	8.5-1
A	460" V8 4-Bbl.	8.5-1

- Ⓞ - Low Compression for Export.
- Ⓞ - Police. Ⓞ - Taxi.

Engine Identification

FORD MOTOR CO. (Cont.)

1973 MODELS

Engine Code Location — Engine code letter (or number) is fifth digit in eleven digit Vehicle Identification Number stamped on a decal on left front door lock face panel or on metal tab riveted to instrument panel close to windshield on drivers side and visible from outside vehicle.

Engine Displacement — Indicated by first entry on top line of tag attached to engine.

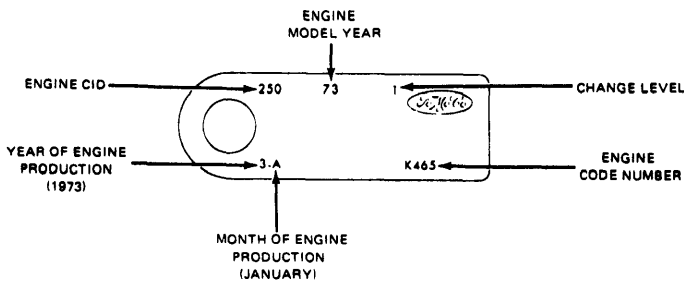
Engine Code	Displ. & Carb.
A.....	460" V8 4-Bbl.
C.....	460" V8 4-Bbl. Police
F.....	302" V8 2-Bbl.
H.....	351" V8 2-Bbl.
L.....	250" 6 Cyl. 1-Bbl.
N.....	429" V8 4-Bbl.
Q.....	351" V8 4-Bbl.
S.....	400" V8 2-Bbl.
T.....	200" 6 Cyl. 1-Bbl.
W.....	1600 cc 4 Cyl. 1-Bbl.
X.....	2000 cc 4 Cyl. 2-Bbl.
3.....	250" 6 Cyl. 1-Bbl. Low Compr. Export

1974 MODELS

Engine Code Location — Engine code letter or number is fifth digit in eleven digit Vehicle Identification Number stamped on a tag on left front door lock face panel or on metal tab riveted to instrument panel close to windshield on drivers side and visible from outside vehicle.

Engine	Engine Code
2000 cc 4 Cyl. 2-Bbl.	X
2300 cc 4 Cyl. 2-Bbl.	Y
2800 cc V6 2-Bbl.	Z
200" 6 Cyl. 1-Bbl.	T
250" 6 Cyl. 1-Bbl.	L
302" V8 2-Bbl.	F
351" V8 2-Bbl.	H
351" V8 4-Bbl.	Q
400" V8 2-Bbl.	S
460" V8 4-Bbl.	A
460" V8 4-Bbl. (Police)....	C

Engine Label — An engine identification label is located on front of rocker cover. Label describes CID, model year, year and month of production, change level number and engine calibration information.

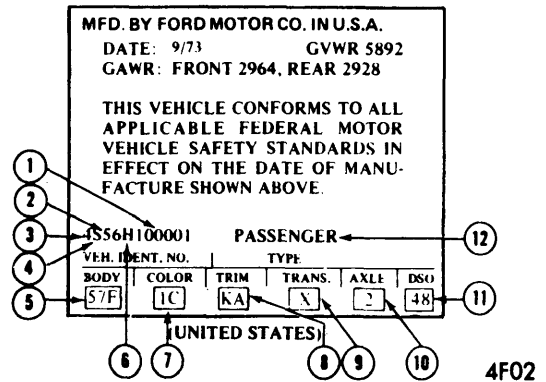


3SM003

FORD MOTOR CO. ENGINE TAG



VEHICLE IDENTIFICATION NUMBER PLATE



- ① CONSECUTIVE UNIT NO.
- ② BODY SERIAL CODE
- ③ MODEL YEAR CODE
- ④ ASSEMBLY PLANT CODE
- ⑤ ENGINE CODE
- ⑥ BODY TYPE CODE
- ⑦ COLOR CODE
- ⑧ VEHICLE TYPE
- ⑨ DISTRICT - SPECIAL EQUIPMENT
- ⑩ REAR AXLE CODE
- ⑪ TRANSMISSION CODE
- ⑫ TRIM CODE

FORD MOTOR CO.
VEHICLE CERTIFICATION LABEL