

# Engine Identification

## BUICK

### 1966 MODELS

Code	Displ. & Carb.	Comp. Ratio
MK	225" V6 2 Bbl.	7.6:1
MH	225" V6 2 Bbl.	9.0:1
MM	300" V8 2 Bbl.	7.6:1
ML	300" V8 2 Bbl.	9.0:1
MX	340" V8 2 Bbl.	8.0:1
MA	340" V8 2 Bbl.	9.0:1
MB	340" V8 4 Bbl.	10.25:1
MR, MV	400" V8 4 Bbl.	10.25:1
MS	400" V8 4 Bbl.	11.0:1
MT	401" V8 4 Bbl.	10.25:1
MV	401" V8 4 Bbl.	8.75:1
MW	425" V8 4 Bbl.	10.25:1
MZ	425" V8 4 Bbl.	10.25:1

### Code Number Locations 1966

Engines stamped with two different numbers. Long number is for registration. **Short** number preceded by two **Letters** is code number.

**225", 300", 340", Engines** – Number located on right side on flat spot just below center spark plugs. (Example (MT-134).

**400", 401", 425" Engines** – Number stamped on front edge of block just ahead of intake manifold cover. Number appears upside down when viewed from front of car. (Example MT-134).

### 1967 MODELS

Code	Displ. & Carb.	Comp. Ratio
NH	225" V6 2 Bbl.	9.0:1
NM	300" V8 2 Bbl.	7.6:1
NL	300" V8 2 Bbl.	9.0:1
NA	340" V8 2 Bbl.	9.0:1
NX	340" V8 4 Bbl.	8.1:1
NB	340" V8 4 Bbl.	10.25:1
NR	400" V8 4 Bbl.	10.25:1
ND, MD, NE	430" V8 4 Bbl.	10.25:1

### Code Number Locations 1967

Engines stamped with two different numbers. Long number is for registration. **Short** number preceded by two **Letters** is code number.

**225", 300", 340" Engines** – Number located right side on flat spot just below two center spark plugs.

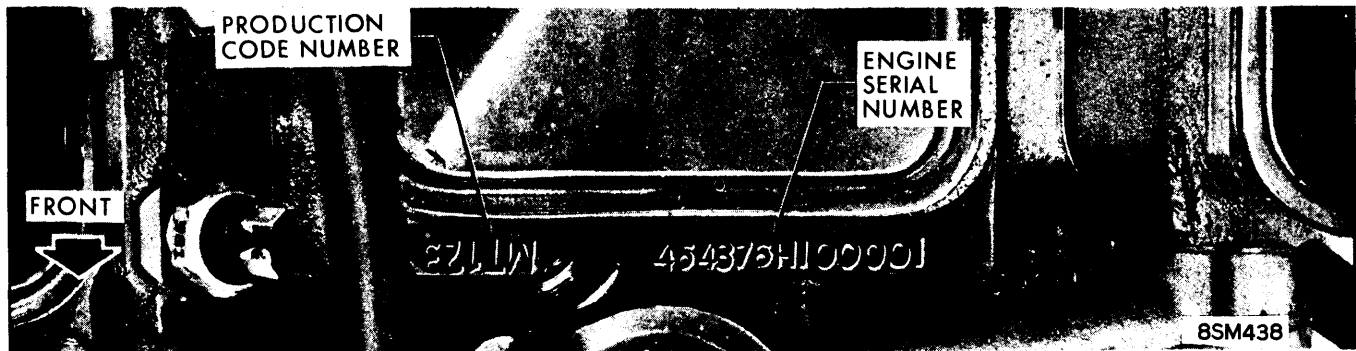
**400" & 430" Engines** – Located right side just below first two spark plugs.



300" & 340" V8 ENGINES

6 CYLINDER ENGINES

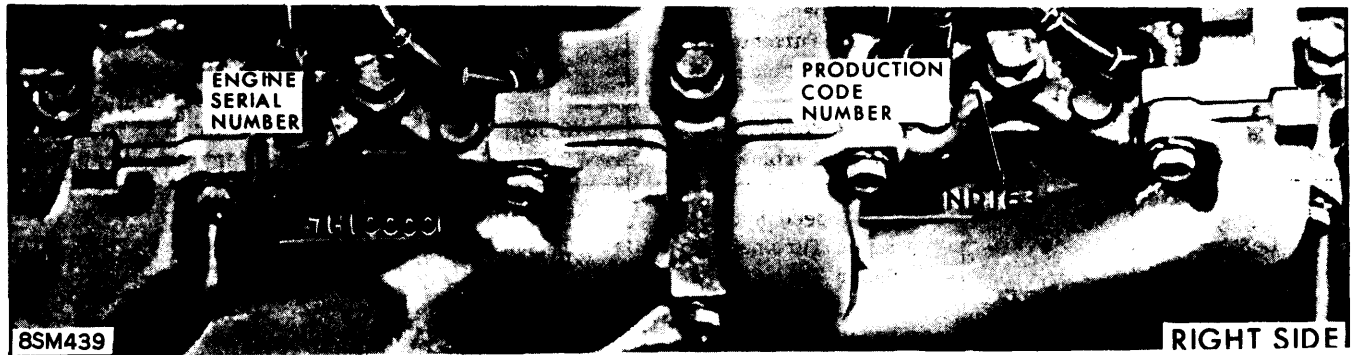
### 1966-67 BUICK ENGINE NUMBERS



1966 BUICK 400", 401", 425" V8 ENGINE NUMBERS

# Engine Identification

## BUICK (Cont.)



1967 BUICK 400" & 430" V8 ENGINE NUMBERS

### 1968 MODELS

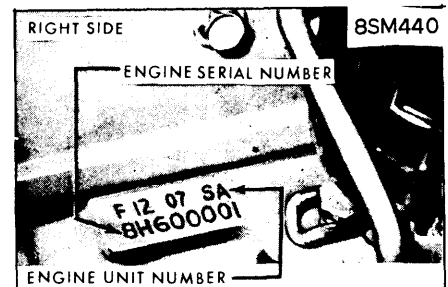
Code	Displ. & Carb.	Comp. Ratio
L6	250" 6 I Bbl.	8.5:1
PO	350" V8 2 Bbl.	9.0:1
PW	350" V8 4 Bbl.	7.6:1
PP	350" V8 4 Bbl.	10.25:1
PR	400" V8 4 Bbl.	10.25:1
PE	430" V8 4 Bbl.	8.75:1
PD	430" V8 4 Bbl.	10.25:1

#### Code Number Locations 1968

6 Cyl. - Located lower right front of block.

350" V8 - Located below first two spark plugs, left side.

400", 430" V8 - Located below third and fourth spark plugs, left side.



1968-71 BUICK 6 CYLINDER ENGINE NUMBERS

### 1969 MODELS

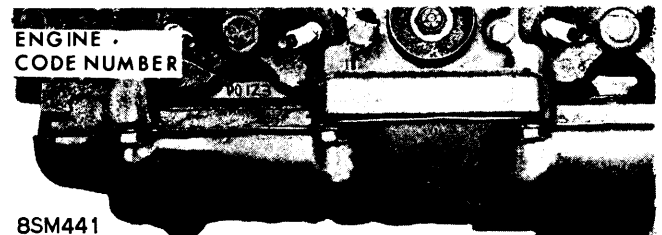
Code	Displ. & Carb.	Comp. Ratio
L	250" 6 I Bbl.	8.5:1
RW	350" V8 2 Bbl.	7.6:1
RO	350" V8 2 Bbl.	9.0:1
RP	350" V8 4 Bbl.	10.25:1
RR, RS	400" V8 4 Bbl.	10.25:1
RE	430" V8 4 Bbl.	8.75:1
RD	430" V8 4 Bbl.	10.25:1

#### Code Number Locations 1969

6 Cyl. - Located lower right front of block.

350" V8 - Located below first two spark plugs, left side.

400", 430" V8 - Located below third and fourth spark plugs, left side.

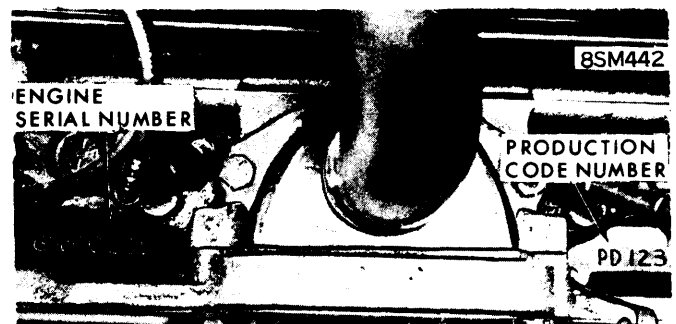


1968-72 350" V8 ENGINE NUMBERS

### 1970 MODELS

Code	Displ. & Carb.	Comp. Ratio
⊙	250" 6 I-Bbl.	8.5:1
SO	350" V8 2-Bbl.	9.0:1
SB	350" V8 4-Bbl.	9.0:1
SP	350" V8 4-Bbl.	10.25:1
SR	455" V8 4-Bbl.	10.0:1
SS (Stage 1)	455" V8 4-Bbl.	10.5:1
SF	455" V8 4-Bbl.	10.0:1

⊙ - 6 cylinder engines do not have engine code designation.



1968-72 400", 430", 455" V8 ENGINE NUMBERS

# Engine Identification

## BUICK (Cont.)

### Code Number Locations 1970

6 Cyl. - Located lower right front of block.

350" V8 - Located below first two spark plugs, left side.

455" V8 - Located below third and fourth spark plugs, left side.

### 1971 MODELS

Engine Code	Displ. & Carb.	Comp. Ratio
①	250" 6 1-Bbl.	8.5-1
TC	350" V8 2-Bbl.	8.5-1
TO	350" V8 2-Bbl.	8.5-1
TB	350" V8 4-Bbl.	8.5-1
TP	350" V8 4-Bbl.	8.5-1
TR	455" V8 4-Bbl.	8.5-1
TA	455" V8 4-Bbl.	8.5-1
TS	455" V8 4-Bbl. Stage 1	8.5-1

① - 6 cylinder engines do not have engine code designation.

### Code Number Locations 1971

6 Cyl. - Located lower right front of block.

350" V8 - Located below first two spark plugs, left side.

455" V8 - Located below third and fourth spark plugs, left side.

### 1972 MODELS

Engine Code	Displ. & Carb.	Comp. Ratio
WC	350" V8 2-Bbl.	8.5-1
WB	350" V8 4-Bbl.	8.5-1
WF	455" V8 4-Bbl.	8.5-1
WS	455" V8 4-Bbl. (Stage 1)	8.5-1
WA	455" V8 4-Bbl. (GS Riviera)	8.5-1

### Code Number Locations 1972

350" V8 - Located below first two spark plugs, left side.

455" V8 - Located below third and fourth spark plugs, left side.

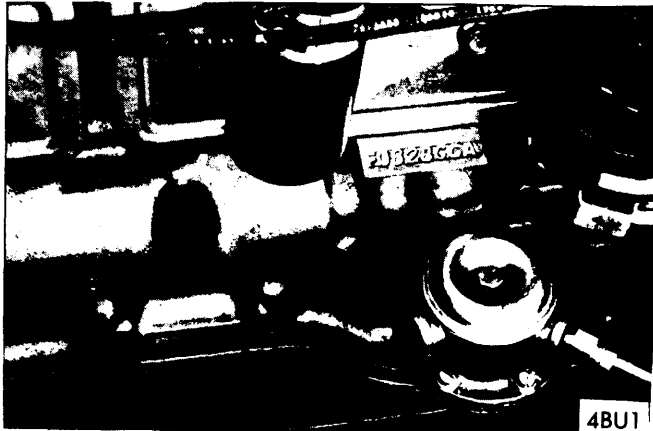
### 1973 MODELS

**Engine Code Location** - Engine Code letters on 6-cylinder engines are suffix of Engine Identification Number, which is stamped on a pad located at right hand side of engine block and to rear of distributor. On V8 engines, engine code letters are first two letters in production code number. On all 350" engines, number is located on left side of engine block below front two spark plugs. On 455" engines, number is located on left side of engine block below rear two spark plugs.

### Engine

### Code Letters

250" 6-Cyl. 1-Bbl.	CCA,CCB,CCC,CCD
350" V8 2-Bbl.	XC
350" V8 4-Bbl.	XB
455" V8 4-Bbl.	XF
455" V8 4-Bbl. (Stage 1)	XS
455" V8 4-Bbl. (GS Rivera)	XA

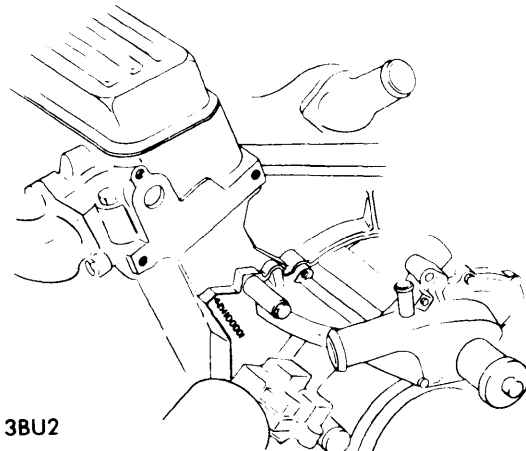


1973-74 6 CYL. ENGINE CODE LOCATION

### 1974 MODELS

**Engine Code Location** - Engine Code letters on 6-cylinder engines are suffix of Engine Identification Number, which is stamped on a pad located at right hand side of engine block to rear of distributor. On V8 engines, engine code letters are first two letters of engine production code number. On all 350" engines, number is located on left side of engine block, below front two spark plugs. On 455" engines, number is located on left side of engine block below rear two spark plugs.

Engine	Federal	Calif.
250" 6-Cyl. 1-Bbl.		
Man. Trans.	CCR	CCR
Auto. Trans.	CCX	CCU
350" V8 2-Bbl.	ZC	ZP
350" V8 4-Bbl.	ZB	ZM
455" V8 2-Bbl.	ZI	ZH
455" V8 4-Bbl.	ZF	ZK
455" V8 4-Bbl. (Stage 1)	ZS	ZS
455" V8 4-Bbl. (GS Riv.)	ZA	ZA



1973-74 V8 ENGINE CODE LOCATION