

DODGE

Dodge, All Models (1965-74)

SPEEDOMETER & GAUGES

All Models (1965-74) — Speedometer and gauges can be removed after removal of instrument cluster.

INSTRUMENT CLUSTER

A-100 (1965-70), B-100, 200, 300 (1971-74) — Disconnect battery ground cable and speedometer cable. While holding a slight pressure against mounting plate, remove four attaching screws and carefully remove mounting plate and glass. Pull instrument cluster out of panel far enough to allow disconnecting of cluster wiring. If equipped, disconnect oil gauge and plug oil line to gauge. Remove cluster.

D-100, 200, 300 & P-200, 300 (1965-71) — Disconnect battery ground cable and remove six attaching screws holding instrument cluster to panel. Disconnect speedometer cable and tachometer (if equipped). Disconnect lead wires to cluster and remove cluster from dash (1965-66 Town Panel & Town Wagon follow same procedure except only four screws hold instrument cluster).

D-100, 200, 300 & P200, 300 (1972-74) — Disconnect battery ground cable and tape or place protective cover over steering column to guard against scratching or chipping column. Remove cluster bezel mounting screws and remove cluster bezel from instrument panel. Remove mounting bolts securing radio to cluster housing.

M-300, 375 & RM-300, 350, 400 (1968-74) — Disconnect battery ground cable and remove six screws attaching instrument cluster to panel. Disconnect speedometer cable and lead wires to instruments and remove cluster. To install, reverse removal procedure.

PRINTED CIRCUITS

B-100, 200, 300 (1972-74) — Remove instrument cluster as outlined in Instrument Cluster section, remove all gauges except speedometer. Remove voltage limiter and all instrument light sockets and bulb assemblies. Remove retaining bolts and lift printed circuit panel from cluster.

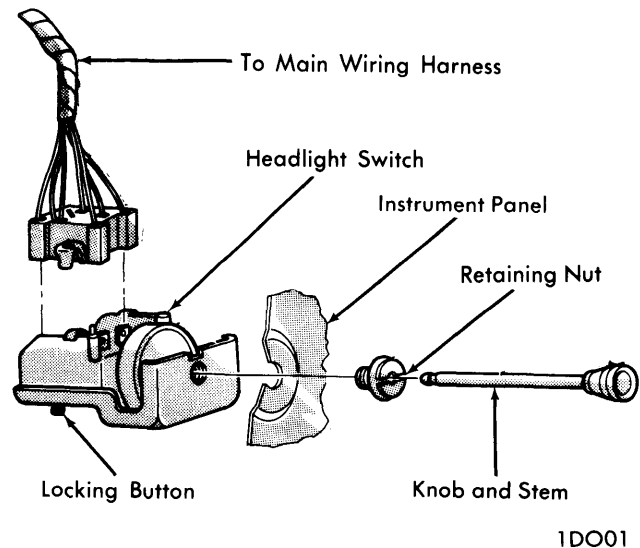
D-100, 200, 300 & P-200 (1972-74) — Remove instrument cluster following procedure given in Instrument Cluster section. Remove cluster mask from housing and lay cluster assembly face down on suitable work surface. Remove radio suppressor capacitor (if applicable) and remove all mounting nuts and bolts from back side of cluster housing. Remove screws holding printed circuit board to cluster housing and remove circuit board.

SPEEDOMETER, FUEL GAUGE, AND TEMPERATURE GAUGE

All Models (1965-74) — All gauges can be tested in vehicle for malfunction. Any replacement or repair must be done after instrument cluster is removed.

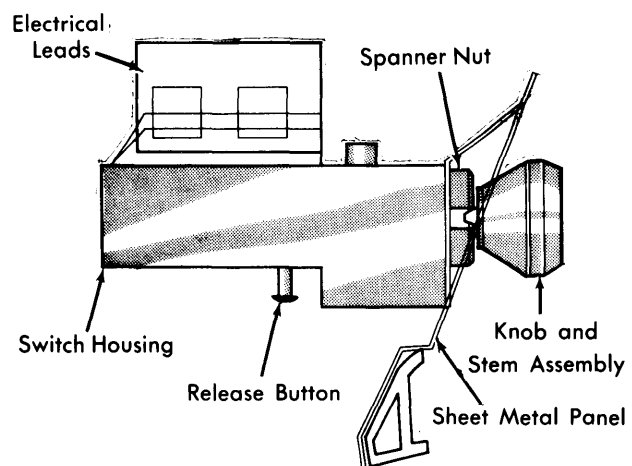
HEADLIGHT SWITCH

B-100, 200, 300 (1971-74) — Remove four cluster retaining screws and roll out instrument cluster far enough to gain access to headlight switch. Through instrument cluster opening, disengage locking tabs on wiring harness connector and remove. Depress stem locking button on bottom of switch and pull knob and stem from switch. Remove retaining nut and remove switch.



HEADLIGHT SWITCH (TYPICAL 1971-74)

D-100, 200, 300 & P-200, 300 (1972-74) — Disconnect battery cable. Reaching under instrument panel, depress knob and stem release button located on switch housing and at the same time pull knob and stem assembly out of switch housing located on front of instrument panel. Using suitable spanner tool, remove spanner nut mounting switch to panel. Lower switch from behind panel and disconnect all electrical leads from switch and remove switch from panel.



HEADLIGHT SWITCH INSTALLATION (TYPICAL 1972-74)

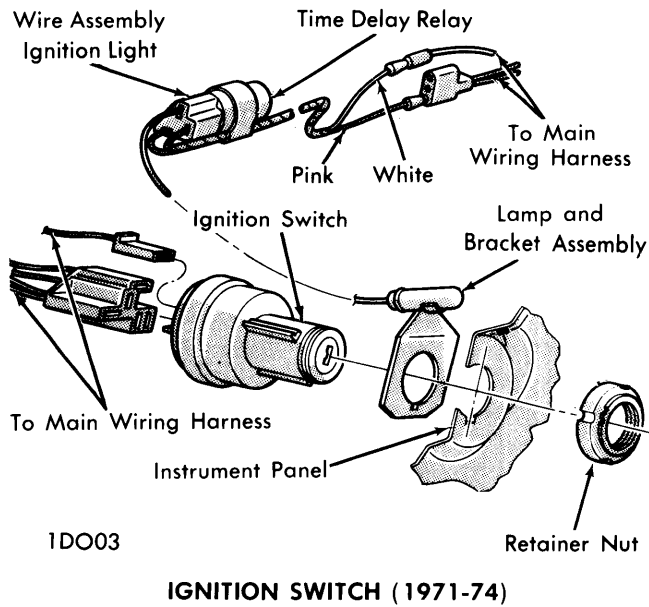
IGNITION SWITCH

B-100, 200, 300 (1971-74) — Remove instrument cluster. Through cluster opening, disconnect wiring harness connectors. From front of instrument panel remove retainer nut. Remove light and bracket assembly from switch (if equipped) and remove ignition switch.

DODGE (Cont.)

D-100, 200, 300, P-200, 300 & RM-300, 350, 400 (1972-74) - Ignition switch is located in steering column. To replace, steering column must first be removed from vehicle and steering wheel removed.

1) Clamp column assembly in suitable vise, drive out gearshift pin and remove lever and spring from housing (if applicable). Remove turn signal switch, upper bearing retainer screws, and remove retainer, lift switch up and out of way, remove turn signal lever. Remove two screws and lift out light assembly (automatic transmission), remove snap ring from upper end of steering shaft.



2) Remove three screws holding bearing housing to lock housing and install steering shaft remover (C-4044 or suitable tool), press shaft out of bearing and remove bearing housing from shaft. Remove bearing lower snap ring from shaft and remove shaft through lower end of column. Place ignition key cylinder in "LOCK" position and remove key, insert small diameter screwdriver or similar tool into lock cylinder release hole and push in to release spring loaded lock retainer, at same time pull lock cylinder out of housing bore and remove ignition switch assembly.

