

CHEVROLET & GMC

Chevrolet, All Models (1965-74)

GMC, All Models (1965-74)

SPEEDOMETER & GAUGES

Chevrolet & GMC, All Models (1965-74) – All instruments and gauges are installed in the instrument cluster. The entire cluster may easily be removed from the vehicle for servicing of the instruments.

INSTRUMENT CLUSTER

Chevrolet "C", "K" & "P" Models (1965-66) – Disconnect negative battery cable. Disconnect speedometer cable and instrument cluster wiring harness connectors. Disconnect oil pressure line, air gauge pipe and tachometer leads (if equipped). Remove five (three for each cluster on flat face cowl models) screws attaching cluster housing to dash panel, and pull cluster toward rear of vehicle out of panel opening.

GMC 1000, C-1500, & C-2500 (1965-66) – Cluster is retained in panel with six screws. To remove cluster, remove screws, disconnect multiple plug and speedometer drive cable, and remove cluster.

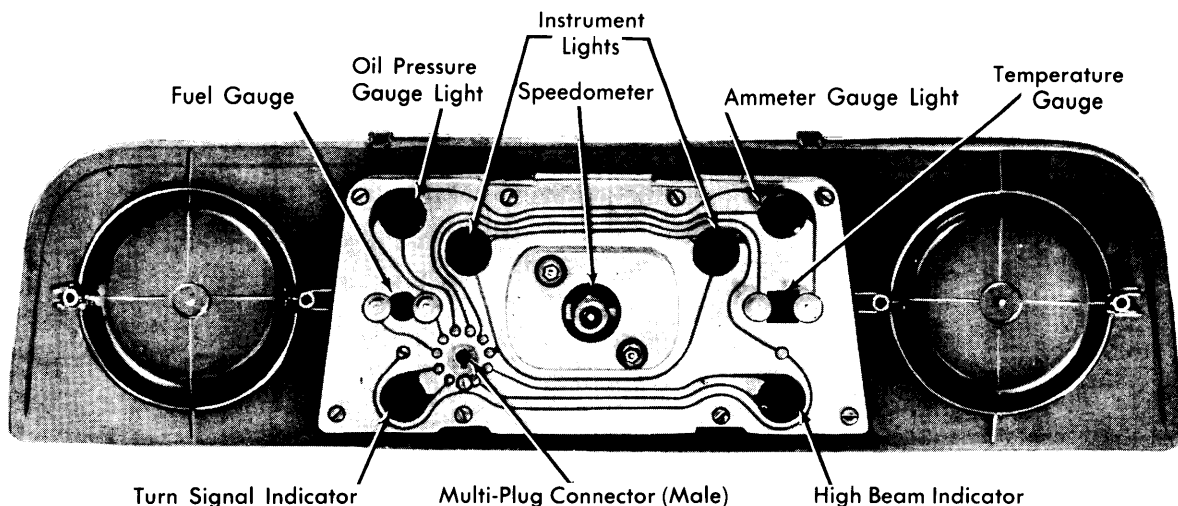
Chevrolet & GMC "C" & "K" Models (1967-72) – Disconnect negative battery cable. Disconnect speedometer cable and wiring harness connector at rear of instrument panel. Remove choke control knob from choke rod, remove setscrew from windshield wiper knob and remove knob. Pull light switch out to extreme position, then press on spring-loaded release button on top of switch assembly and

pull switch knob and rod out of instrument panel. Using suitable tool, remove choke control, windshield wiper, and light switch bezels from instrument panel. Remove cluster retaining screws from assembly face and remove cluster from panel.

Chevrolet & GMC "C" & "K" Models (1973-74) – Disconnect battery ground cable. Remove instrument cluster bezel and steering column cover screws, remove both bezel and cover. Remove clock knob (if equipped). Remove lens retaining screws and lens. Remove transmission quadrant indicator retaining screws and remove indicator. Remove cluster retainer. Reach up under dash and disconnect speedometer cable by depressing spring clip, and pull out cable. Disconnect oil pressure line (if equipped). Disconnect cluster wiring harness, remove cluster retaining screws, and remove cluster. Move cluster assembly to suitable work area for further disassembly.

Chevrolet "G" Models (1965-66) – Disconnect battery ground cable and unscrew retaining collar securing speedometer cable. Remove two cluster retaining screws, pull down on springs at top rear of panel and carefully pull cluster assembly from instrument panel. With cluster partially removed, disengage all cluster illuminating and indicator lights, and wiring harness connector, detach harness from cluster retaining clip. Remove cluster from vehicle.

Chevrolet & GMC "G" Models (1967-70) – Disconnect battery ground cable and speedometer cable. Remove two nuts attaching cluster to dash panel. Pull cluster clear of dash panel. Disconnect all indicator and illuminating bulb sockets noting location for proper reinstallation. Remove cluster.



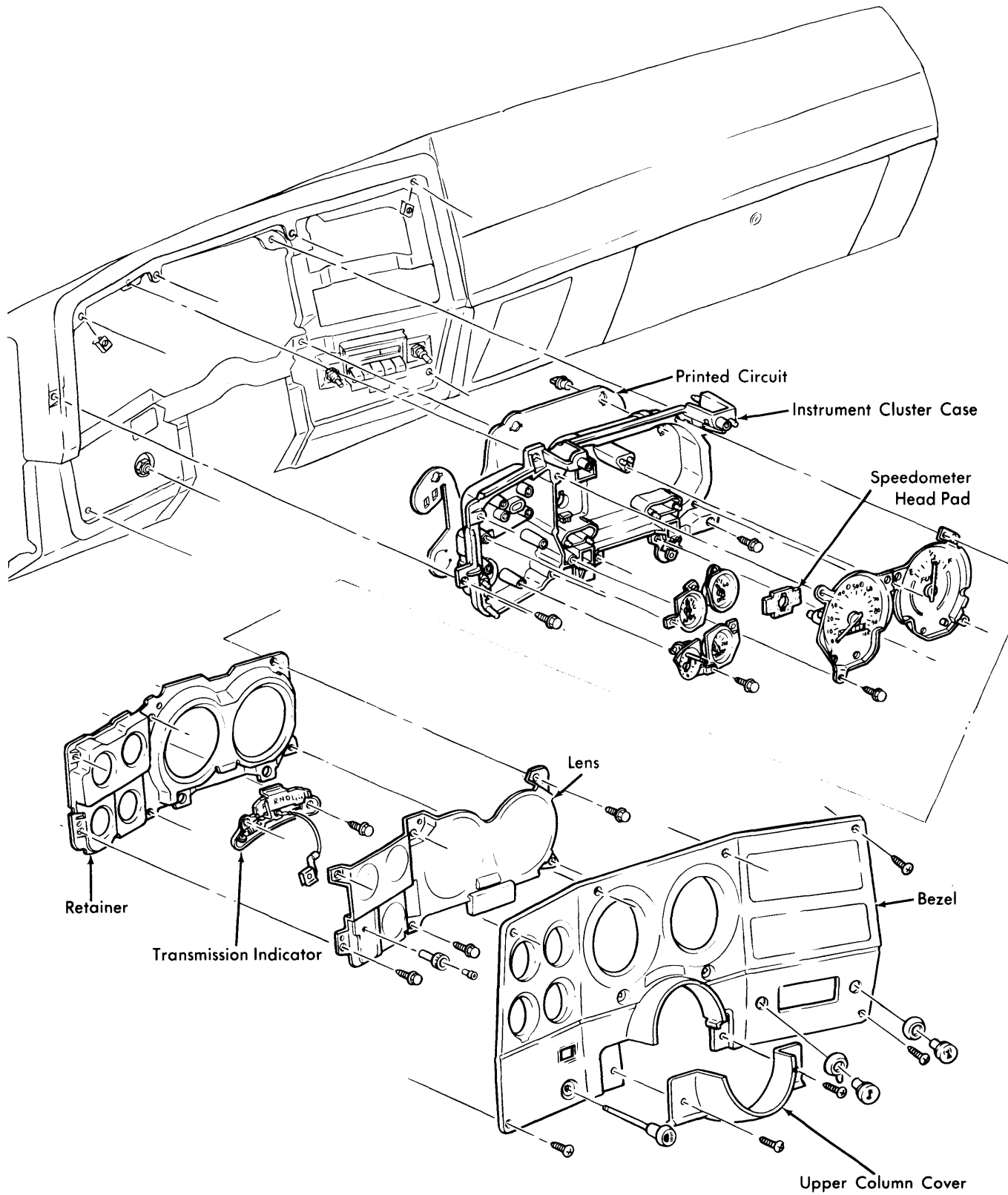
5GM01

INSTRUMENT CLUSTER REAR VIEW

(TYPICAL 1965-66 GMC)

Switches, Gauges, Speedometer

CHEVROLET & GMC (Cont.)



3CH03

INSTRUMENT CLUSTER, CHEVROLET & GMC (1973-74)

CHEVROLET & GMC (Cont.)

INSTRUMENT CLUSTER (Cont.)

Chevrolet & GMC "P" Models (1967-70) – Instrument cluster and speedometer must be removed separately from rear of instrument panel. Disconnect battery ground cable. Disconnect electrical connections and oil pressure pipe at rear of cluster. Remove screws which attach cluster to instrument panel and carefully pull cluster from rear of instrument panel.

Chevrolet & GMC "G" Models and "P" Models (1971-74) – Open hood and remove ground cable from battery. Reach up under instrument cluster and disconnect speedometer cable by first depressing tang on rear of speedometer head and pushing, then pulling, cable free from head as tang is depressed. Unplug electrical harness connector from printed circuit. Disconnect oil pressure line from gauge (if equipped) and remove two nuts attaching instrument cluster studs to lower opening in instrument panel, and lift out bottom of cluster. Remove cluster to suitable work area for further disassembly.

PRINTED CIRCUITS

Chevrolet & GMC, All Models (1966-74) – Remove instrument cluster and remove all cluster light assemblies. Remove printed circuit retaining screws. Remove fuel, temperature, and ammeter terminal nuts holding printed circuit to cluster cover. Remove printed circuit from rear of instrument cluster. *NOTE: Retaining screws serve as ground for printed circuit and must be reinstalled to provide proper ground connection.*

SPEEDOMETER, FUEL GAUGE, & TEMPERATURE GAUGE

Chevrolet & GMC, All Models (1965-74) – All gauges and speedometer may be removed or replaced once instrument cluster has been removed from vehicle.

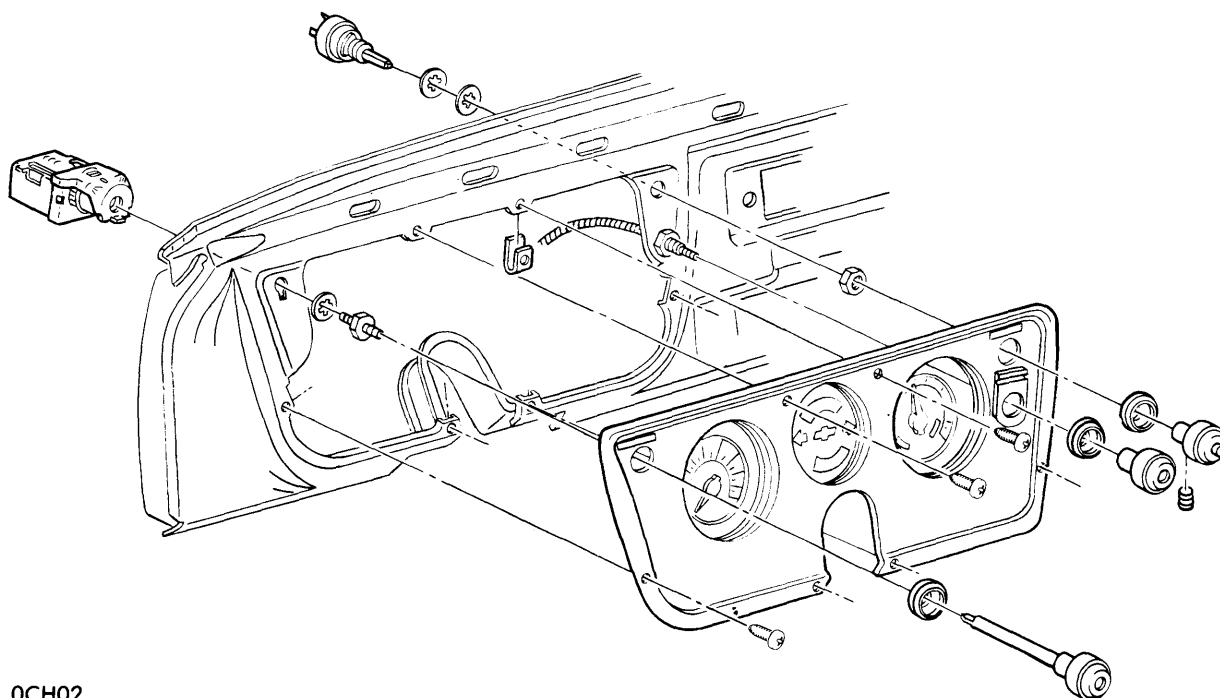
HEADLIGHT SWITCH

Chevrolet & GMC, All Models (1965-74) – Disconnect battery ground cable. Reach up behind instrument cluster and depress shaft retaining button to remove switch knob and rod. Remove instrument cluster switch retaining nut, and push switch from panel opening and remove electrical connections at switch terminals. Reinstall by reversing removal steps, make sure ground wire is reinstalled where applicable.

IGNITION SWITCH

Chevrolet & GMC "C", "K" (1965-72) & "G" & "P" Models (1965-74) – Disconnect battery cable. Remove lock cylinder by positioning switch in "ACC" position and insert wire in small hole in lock cylinder face. Push in with wire to depress plunger and continue to turn key counterclockwise until lock cylinder can be removed. Remove metal ignition switch nut using suitable tool. Pull ignition switch out from under dash and remove wiring connector. To remove "theft resistant" connector, switch must be out from under dash, using screwdriver, unsnap locking tangs on connector and unplug connector. Resnap connector into place on replacement switch and reinstall in reverse procedure.

Chevrolet & GMC "C" & "K" Models (1973-74) – Ignition switch is mounted in steering column. To remove, first lower and support steering column. It is not necessary to remove steering wheel. Switch should be positioned in "LOCK" position before removing. If lock cylinder has already been removed, actuating rod to switch should be pulled up until there is a definite stop, then moved down one detent to the "LOCK" position. Remove two switch screws and remove ignition switch assembly.



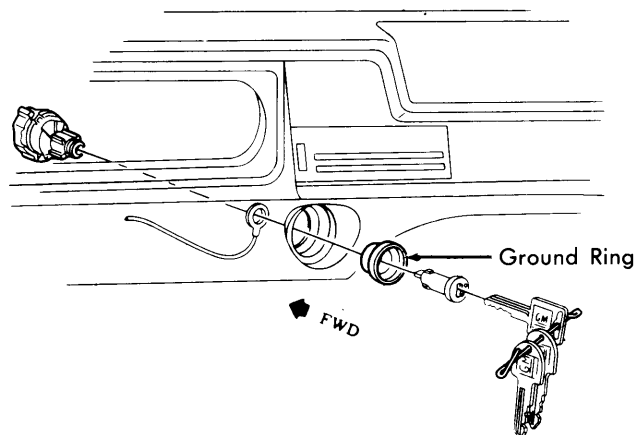
OCH02

INSTRUMENT CLUSTER "C" & "K" MODELS CHEVROLET OR GMC (1967-72)

Switches, Gauges, Speedometer

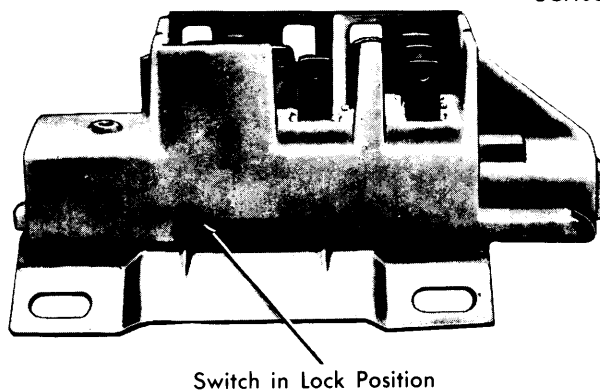
CHEVROLET & GMC (Cont.)

1CH04



IGNITION SWITCH REPLACEMENT, TYPICAL (1967-72)

3CH05



IGNITION SWITCH ASSEMBLY, COLUMN MOUNT
(1973-74)