

PEUGEOT (Cont.)

- 2 - 10 Amp. Interior, Luggage Compartment, and Clock Lights.
- 3 - 10 Amp. Brake Lights, Cooling Fan Clutch, Turn Signals, Gauges, and Warning Lights.
- 4 - 10 Amp. Heater and Windshield Wipers.

1963-67 403 Models - Fuse block is located under instrument panel to left of steering column.

NOTE - 403 models use the same fuse block design as 404 models.

1963-66 404 Models - Fuse block is located under left kick panel. Block contains four fuses protecting circuits listed.

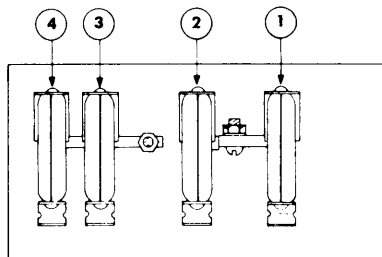
1963-66 MODELS

- 1 - 10 Amp. Front and Rear Parking Lights, Instrument Lights and Trunk Lights.
- 2 - 18 Amp. Dome Light, Horns, and Cigar Lighter.
- 3 - 10 Amp. Turn Signals, Stop Lights, and Fan Clutch.
- 4 - 10 Amp. Heater and Windshield Wiper Motor.

1969-73 504 Models - Fuse block is located on left kick panel. Circuits protected are, from top to bottom:

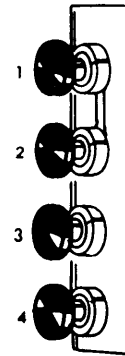
1969-73 MODELS

- 1 - 5 Amp. Side Marker, Instrument and License Plate Lights.
- 2 - 10 Amp. Interior, Luggage Compartment & Parking Lights, Horn, Cigarette Lighter and Clock.
- 3 - 10 Amp. Cooling Fan Clutch, Fuel Pump, Stop and Back-Up Lights.
- 4 - 10 Amp. Turn Signals, Heater, Gauges and Indicator Lights.
- 5 - 10 Amp. Windshield Wiper Motor.



1E154

1971-72 304 PEUGEOT FUSE BLOCK

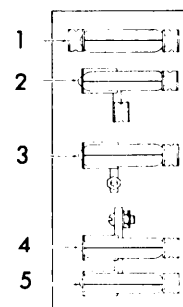


1963-66 404 PEUGEOT FUSE BLOCK

1967-70 404 MODELS

- 1 - 10 Amp. Windshield wiper motor.
- 2 - 10 Amp. Parking Lights, Instrument Panel Lights and License Plate Lights.
- 3 - 10 Amp. Turn Signals, Horn, Clock, Dome, Glove Box Light, Trunk Light, Emergency Flasher and Cigar Lighter.
- 4 - 10 Amp. Exhaust Emission Control System, Stop Lights, Back-up Lights, and Cooling Fan Clutch.
- 5 - 10 Amp. Heater, Fuel and Temperature Gauge, Brake Failure Warning Light, Ignition Warning Light, and Oil Pressure Warning Light.

1967-70 404 Models - Fuse block is located on left kick panel. Block contains five fuses that protect circuits listed.



0E202

1967-70 404 PEUGEOT FUSE BLOCK

PORSCHE

FUSE BLOCK

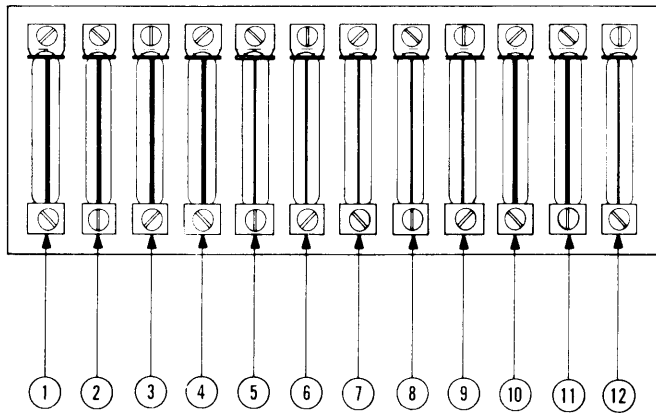
1966-67 912 Models - Fuse block is located under luggage compartment.

1966-67 MODELS

- 1 - Stop, Turn Signal, and Back-Up Lights.
- 2 - Interior Light and Cigar Lighter.
- 3 - Supplementary Heater.

- 4 - Windshield Wiper and Washer.
- 5 - Fog Lights.
- 6 - License Plate and Luggage Compartment Light.
- 7 - Right Side Parking Lights.
- 8 - Left Side Parking Lights.
- 9 - Right Side Low Beam.
- 10 - Left Side Low Beam.
- 11 - Right Side High Beam, and Indicator Light.
- 12 - Left Side High Beam.

PORSCHE (Cont.)



OE115

1966-67 PORSCHE 912 FUSE BLOCK

1968-69 912 Models — Fuses are located in left front part of luggage compartment and are covered by a plastic shield. Fuses are contained in two separate fuse blocks, one above the other. Respective fuses are identified as indicated:

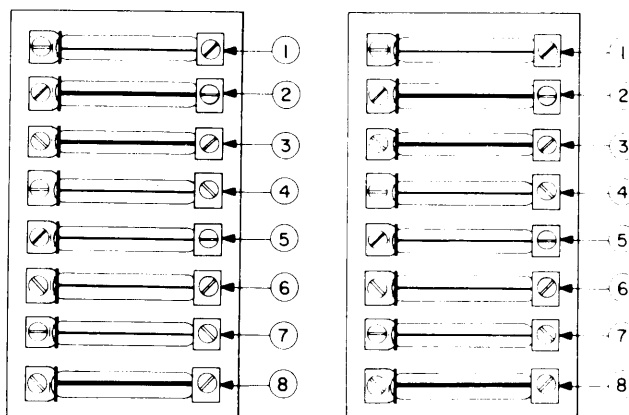
1968-69 MODELS

Upper Fuse Block

- 1 — Power Windows.
- 2 — Power Windows.
- 3 — Cigar Lighter and Clock.
- 4 — Windshield Wipers and Washer.
- 5 — Emergency Warning Lights.
- 6 — Brake Lights, Emergency Flasher, and Back-Up Lights.
- 7 — Left Turn Signal.
- 8 — Right Turn Signal.

Lower Fuse Block

- 1 — Left High Beam.
- 2 — Right High Beam.
- 3 — Left Low Beam.
- 4 — Right Low Beam.
- 5 — Left Side Marker.
- 6 — Right Side Marker.
- 7 — License Plate and Luggage Compartment Lights.
- 8 — Electric Sun Roof.



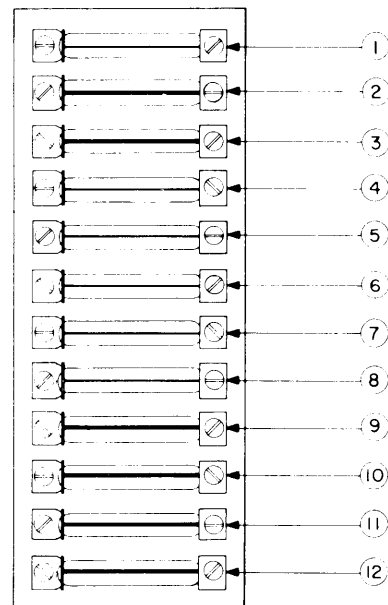
OE116

1968-69 912 PORSCHE FUSE BLOCK

1963-65 356 Models — Fuse block is centrally located under instrument panel.

1963-65 MODELS

- 1 — Stop and Turn Lights, and Fuel Gauge.
- 2 — Cigar Lighter.
- 3 — Horn.
- 4 — Windshield Wipers and Interior Lights.
- 5 — Left Side Fog Lights.
- 6 — Right Side Fog Lights.
- 7 — Left Side Tail, Parking, and License Plate Lights.
- 8 — Right Side Tail, Parking, and License Plate Lights.
- 9 — Left Low Beam and Back-Up Light.
- 10 — Right Low Beam.
- 11 — Left High Beam and High Beam Indicator.
- 12 — Right High Beam.



OE117

1963-65 356 PORSCHE FUSE BLOCK

1970-73 914 Models — Fuse block is mounted under instrument panel to left of steering column. Block contains 12 fuses. Circuits protected are as indicated, from left to right:

1970-73 MODELS

- 1 — 8 Amp. Left Hand High Beam.
- 2 — 8 Amp. Right Hand High Beam.
- 3 — 8 Amp. Left Hand Low Beam.
- 4 — 8 Amp. Right Hand Low Beam.
- 5 — 8 Amp. Left Hand Parking and Tail Lights.
- 6 — 8 Amp. Right Hand Parking and Tail Lights.
- 7 — 8 Amp. License Plate Lights.
- 8 — 25 Amp. Windshield Wiper, Cigarette Lighter, Turn Signals, Stop Lights and Back-Up Lights.
- 9 — 8 Amp. Heater Motor and Horn.
- 10 — 8 Amp. Fog Lights (optional).
- 11 — 8 Amp. Hazard Flasher and Interior Lights.
- 12 — 25 Amp. Retractable Headlights.

PORSCH (Cont.)

1966-73 911 Models — Fuse block is located in left front part of luggage compartment next to battery. Fuse block is protected by a plastic cover. Individual fuses are identified by number and nomenclature inscribed inside cover. An additional fuse block is located in engine compartment on left side under relay panel cover. This fuse block protects rear win-

dow defogger, fuel system, and Sportmatic transmission (if equipped).

1970-71 914/6 Models — Fuse block is located beneath instrument panel at left of steering column and is cover by a transparent plastic cover. The respective fuses are identified inside cover.

RENAULT

FUSE BLOCK

1963-67 Dauphine Models — Fuse block is located in glove compartment on left side of vehicle. Block contains two fuses. A 25 amp. fuse protects circuits which operate independently of the ignition. A second 25 amp. fuse protects circuits which operate only with ignition on.

1963-67 R-8 Models — Fuse block is located in glove compartment on left side of vehicle. Block contains two fuses. A 25 amp. fuse protects circuits which operate independently of the ignition. A second 25 amp. fuse protects circuits which operate only with ignition on.

1967-70 R-10 Models — Fuse block is located in left side of vehicle. Block contains two 15 amp. fuses. One fuse protects equipment which is independent of the ignition switch, the other protects ignition only circuits.

1969-73 R-16 Models — Fuse block is located in engine compartment on left wheel inner fender panel. Block contains two fuses. The fuses protect auxiliary as well as ignition only circuits.

1971-73 R-12 Models — Fuse block contains six fuses. Application is as indicated:

1971-73 MODELS

8 Amp. — Interior, Trunk and Parking Lights, and Cigar Lighter.

8 Amp. — Windshield Wiper.

8 Amp. — Stop Lights, Instrument Panel, and Heater.

5 Amp. — Rear Window Defogger.

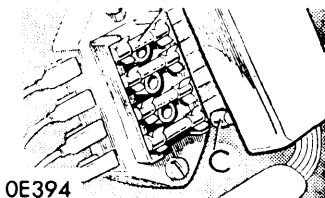
8 Amp. — Automatic Transmission Electrical Circuit.

1972-73 R-15 & R-17 Models — Fuse block contains 10 fuses.

ROVER

FUSE BLOCK

1966-67 2000 Models — Fuse block is located in engine compartment above steering box.



1966-67 ROVER 2000 FUSE BLOCK

1970-71 3500S Models — Fuse block is located in glove compartment on right side.

1970-71 MODELS

1 & 2 — 35 Amp. Battery Control.

3 & 4 — 35 Amp. Ignition Control.

5 & 6 — 5 Amp. Parking Lights.

7 & 8 — 5 Amp. Side Marker and Tail Lights.

9 & 10 — 5 Amp. Panel Lights.

11 & 12 — 25 Amp. Inner Headlight.

13 & 14 — 15 Amp. Outer Headlight.

15 & 16 — 10 Amp. Right Headlight Dimmer.

17 & 18 — 10 Amp. Left Headlight Dimmer.

19 & 20 — 25 Amp. Windshield Wipers and Heater.

21 & 22 — 25 Amp. Hazard Warning Lights.

23 & 24 — 35 Amp. Air Conditioning.

NOTE — Five spare fuses are clipped to fuse block cover.

1971-73 Land Rover Models — Fuse block is located on underside of steering column. Block contains four fuses with two spare fuses in cover. Fuse applications are indicated:

1971-73 MODELS

1 — 35 Amp. Headlights.

2 — 35 Amp. Spare.

3 — 35 Amp. Turn Signals and Windshield Wipers.

4 — 35 Amp. Stop Lights and Gauges.

IN-LINE FUSES

1966-67 2000 Models — A 2 amp. in-line fuse, located just below fuse block, protects instrument lights.