

## MITSUBISHI

Colt (1971-72)  
 Datsun (1963-67)  
 Mazda (1971-73)

### DESCRIPTION

Regulator consists of two elements; constant-voltage relay and pilot lamp relay. Both relays consist of an electromagnet, contacts, frame, moving element and coil side plate. This regulator has a temperature compensation gradient as an improvement over the constant voltage charging system. It has functions for automatically compensating the adjusted value of the constant-voltage relay so that the adjusted value will be lower in summer and higher in winter.

### APPLICATION

Model	Mitsubishi Part No.
Colt (1971-72) .....	RQB2220D
Datsun	
410 (1964-65) .....	RL-A2
310 (1963-65) .....	RL-A1
411 (1966-67) .....	RL-2B1
311 (1966-67) .....	RL-2B3
520 (1966-67) .....	RL-2220B5
Mazda <sup>Ⓛ</sup>	
1200 (1971-72) .....	0222 18 391C
616 (1971) .....	Ⓜ0259 18 391B
618 Sedan (1972) .....	0259 18 391B
Coupe Prior to 8/72 .....	0222 18 391C
From 8/72 .....	0259 18 391B
808	
Prior to 8/72 .....	0222 18 391C
From 8/72 .....	0259 18 391B
R-100 (1971) .....	0222 18 391C
RX-2 (1971-72) .....	0222 18 391C
B1600 (1972) .....	0259 18 391B
All Models (1973) .....	0259 18 391B

Ⓛ — Mitsubishi alternators are listed with Mazda part numbers.

Ⓜ — Part No. 0222 18 391C is optional.

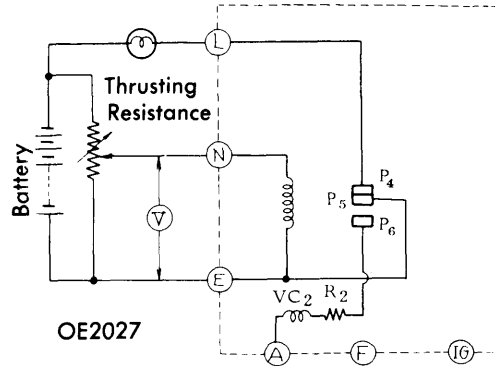
### TESTING

To check adjusted value of constant voltage relay, connect a voltmeter between terminal "A" and "E" of the regulator. Place generator at no load by disconnecting one of the battery terminals during operation at idling speed, then increase alternator speed to approximately 4000 RPM (Approximately 2000 engine RPM). In this condition, satisfactory voltage is 14.0-15.8 volts.

### PILOT LAMP RELAY

Connect the regulator, battery, resistance and voltmeter as shown in illustration. Read voltage between "N"- "E" by putting the lamp out (raising voltage by lowering resistance). This indicates pilot lamp relay operating voltage. The lamp "OFF" voltage should be 4.2-5.2 volts. Next, raise the resistance

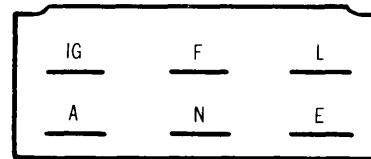
(lowering voltage), and read the voltage when lamp lights. The lamp "ON" voltage should be .5-.3 volts. If not within specifications, adjust as necessary.



### PILOT LAMP RELAY TEST CONNECTIONS

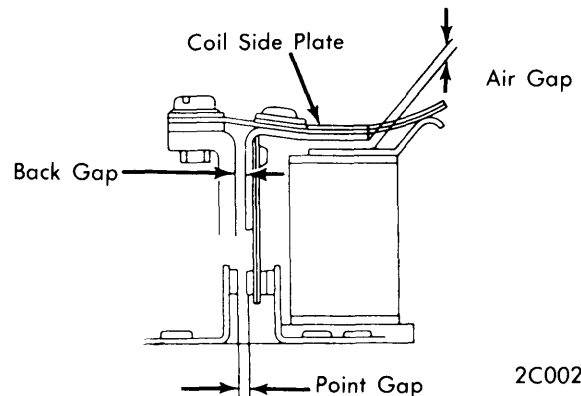
### ADJUSTMENT

Adjust voltage of the constant voltage relay by bending end of coil side plate up or down as shown in illustration. If plate is bent up, the adjusted value becomes higher. If it is bent down, value becomes lower. Adjust pilot lamp relay by same method.



3C001

### REGULATOR HARNESS CONNECTOR



2C002

### VOLTAGE ADJUSTMENT

# Alternator Regulator

MITSUBISHI (Cont.)

MITSUBISHI ALTERNATOR REGULATOR SPECIFICATIONS							
Reg. No.	VOLTAGE REGULATOR				PILOT LAMP RELAY		
	Output Volts	Back Gap in. (mm)	Air Gap in. (mm)	Point Gap in. (mm)	Yoke Gap in. (mm)	Air Gap in. (mm)	Point Gap in. (mm)
RL-2220B5 1966-67 Only	13.5-14.5	.032-.047 (.8-1.2)	.032-.043 (.8-1.1)	.012-.016 (.3-.4)	.035-.047 (.9-1.2)	.030-.043 (.75-1.1)	.030-.043 (.75-1.1)
All Others 1962-70	14-15	.032-.039 (.8-1.1)	.028-.035 (.7-.9)	.012-.016 (.3-.4)	.032-.047 (.8-1.2)	.032-.043 (.8-1.1)	.032-.043 (.8-1.1)
All 1971	13.5-14.5	.032-.047 (.8-1.2)	.032-.043 (.8-1.1)	.012-.016 (.3-.4)	.035-.047 (.9-1.2)	.030-.043 (.75-1.1)	.030-.043 (.75-1.1)
All 1972-73	14.3-15.8	.032-.047 (.8-1.2)	.032-.043 (.8-1.1)	.012-.016 (.3-.4)	.035-.047 (.8-1.2)	.030-.043 (.75-1.1)	.030-.043 (.75-1.1)