

Windshield Wipers

1971-74 CHRYSLER CORP. ELECTRIC

Chrysler & Imperial
Dodge, All Models
Plymouth, All Models

DESCRIPTION

Two speed wiper system is standard equipment on most models. A variable or three speed system is offered as optional equipment. On one version of the two speed system the blades park in the lowest portion of the wipe area. The other version parks the blades in a "concealed" or depressed location. All variable speed and three speed systems park the blades in the depressed location.

ADJUSTMENT

Wiper Arm

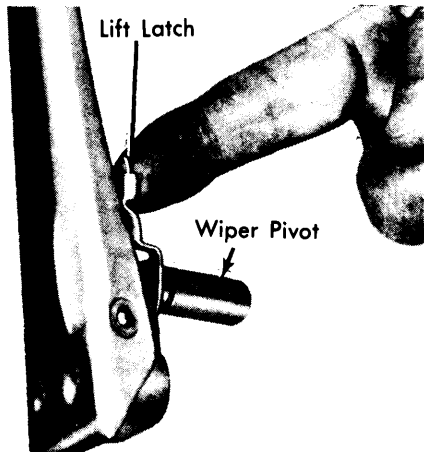
With Concealed Wipers - Check adjustment by applying a constant UPWARD force of 50 oz. parallel to the windshield at the end of the wiper arm at blade attachment. With force applied, the clearance between side of wiper blade and the blade stop should be as follows:

Model	Clearance	
	Right	Left
Barracuda, Challenger	1.25-3.00"	.75-2.00"
Satellite, Coronet, Charger	0-1.75"	0-1.50"
Polara, Monaco, Fury, Chrysler & Imperial	.75-2.50"	.25-2.00"

With Non-Concealed Wipers & Variable Speed Motor - Using the same procedure as above, clearance between the tip of the wiper blade and the lower windshield moulding should be .5-2.25" (right) and .25-2.00" (left) on all models.

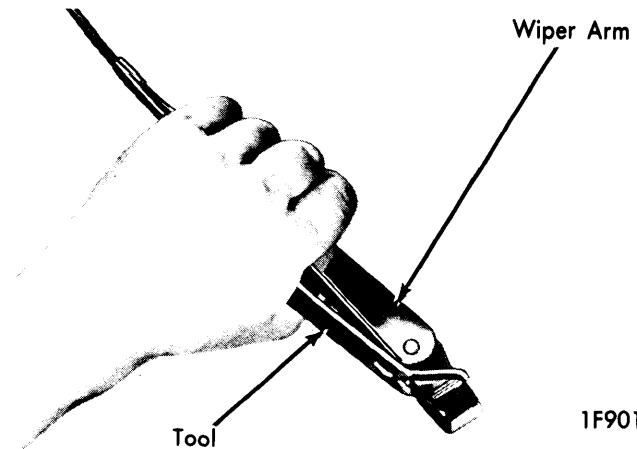
With Non-Concealed Wipers & 2-Speed Motor - Check adjustment by applying a constant DOWNWARD force of 25 oz. parallel to the windshield at the end of the wiper arm at the blade attachment. With the downward force applied, clearance between the tip of the wiper blade and the windshield moulding should be .5-2.25" (right) and .25-2.00" (left) on all models.

Clearance Adjustment - If the above specified clearances are not within tolerance, reposition the wiper arm to obtain specified clearance of wiper blade to windshield moulding or blade stop. To remove wiper arm, use suitable tool (C-3982) (see illustration) or if the arm is equipped with a release latch (see illustration), lift the arm to per-



1F9009

REMOVING WIPER ARM WITH LIFT LATCH



1F9010

REMOVING WIPER ARM WITH SPECIAL TOOL

mit the latch to be pulled out to the holding position. Remove arm from pivot shaft using a rocking motion, then reposition it as required. **CAUTION** - Do not use a screwdriver in an attempt to remove a wiper arm. Distortion of the arm will cause it to fall off at a later time. DO NOT push or bend the spring clip in the base of the arm in an attempt to release the arm from the pivot.

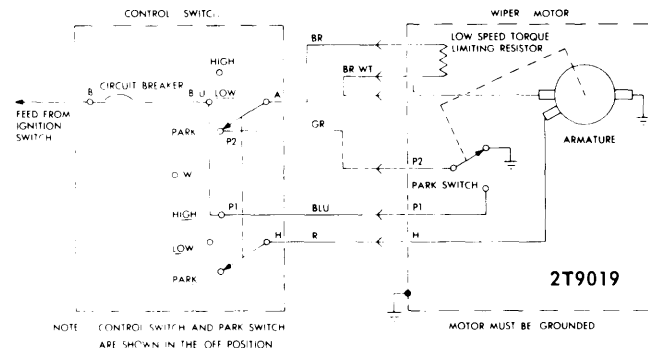
TESTING

Wiper Motor Tests

NOTE - Testing procedure for 2-speed motors with non-concealed wipers differs from procedure used to test 2-speed motors used with concealed wipers. Do not use improper procedure.

2-Speed Motor (Non-Concealed Wipers)

- 1) Disconnect wires at motor and connect jumper from positive battery terminal to motor terminal "H" (see illustration). Motor should run at high speed. If OK, remove jumper.
- 2) Connect a jumper from battery to resistor terminal, and also connect another jumper from terminal "L" to the second resistor terminal. Motor should run at low speed. Remove jumpers.
- 3) Connect a jumper from battery to motor terminal "P1" and connect another jumper from motor terminal "P2" to terminal "L". Motor should park. If blades were already parked, run motor as in step 2 to move blades up, then repeat step 3 to observe parking.

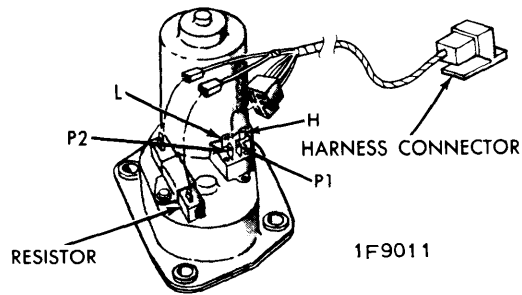


2-SPEED WIPER MOTOR WIRING DIAGRAM (NON-CONCEALED WIPERS)

1971-74 CHRYSLER CORP. ELECTRIC (Cont.)

2-Speed Motor (Concealed Wipers)

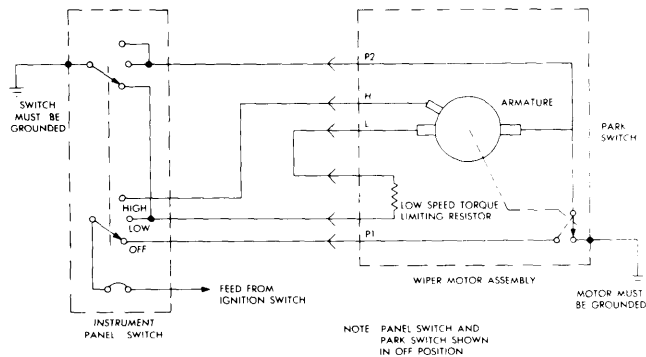
1) Disconnect wires at motor and connect jumper from positive battery terminal to motor terminal "H" (see illustration). Connect another jumper from terminal "P2" to ground. Motor should run at high speed. Remove jumpers.



2-SPEED MOTOR TERMINALS

2) Connect jumper from battery to resistor terminal. Connect a second jumper from terminal "L" to the second resistor terminal. Connect a third jumper from terminal "P2" to ground. Motor should run forward at low speed. Remove jumpers.

3) Connect jumper from battery to motor terminal "P1". Connect another jumper from motor terminal "L" to ground. Motor should run in reverse rotation for at least a half revolution, then park.



2-SPEED WIPER MOTOR WIRING DIAGRAM (CONCEALED WIPERS)

Variable & 3-Speed Motors

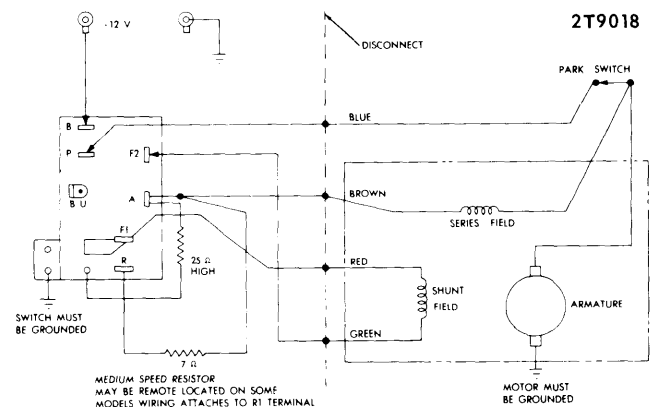
1) Disconnect motor leads at bulkhead disconnect. Connect a jumper from the green lead to ground. Connect a second jumper wire from battery positive terminal to the brown and red leads in bulkhead disconnect. Motor should run continuously.

2) If motor does not run, unsolder the two green leads at the park switch and fasten them together. Connect the jumper leads again as in step 1. If motor runs, replace the park switch.

3) If park switch replaced (or was not shorted) and motor draws excessive current, check for binding linkage. If linkage OK, remove park switch plate. If plate is jammed and difficult to remove, or if motor runs normally when jumpers are connected again, replace the latch assembly.

4) If motor continuous to draw excessive current, replace motor. If motor now OK, resolder green wires to park switch. Disconnect the green leads from each other as the wiper blades are on a downward sweep. Proceed to step 5.

5) Connect jumper wire from green lead to brown lead. Connect red lead to ground with another jumper. Connect third jumper from battery to blue lead. Wiper should run to park position.



3-SPEED WIPER MOTOR WIRING DIAGRAM

MOTOR REPLACEMENT

With Non-Concealed Wipers

- 1) Disconnect battery and motor wiring harness.
- 2) Remove mounting nuts. If vehicle does not have A/C, remove crank arm nut and crank arm from under instrument panel and omit step 3 and 4 that follow.
- 3) Work motor off studs just far enough to gain access to crank arm nut. **CAUTION** - Do not force or pry motor from studs as drive link is easily distorted.
- 4) Use a 1/2" open end wrench and remove crank arm nut. Carefully pry crank arm off shaft.
- 5) To install, reverse removal procedure. **NOTE** - Before installing crank arm on motor shaft, inspect the index flats on the crank arm. If they are worn or deformed, replace the crank arm.

With Concealed Wipers

- 1) Disconnect battery. Remove wiper blade and arm assemblies. Remove cowl screen.
- 2) Remove crank arm retaining nut, remove drive crank. Disconnect wiring to motor. Remove wiper motor mounting nuts and remove motor.
- 3) To install, reverse removal procedure.