

MOTOROLA

DESCRIPTION

Fully transistorized type voltage regulator. No adjustments are required. Unit is sealed at the factory and should be replaced if operation is not satisfactory.

TESTING

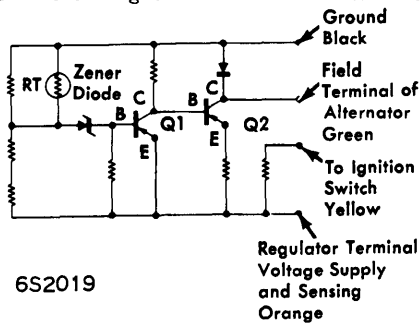
NOTE - Make sure alternator is operating properly before testing voltage regulator. See "Motorola Alternator" in this section.

1) With engine off, disconnect output cable from alternator and connect an ammeter (0-60 amperes) in series with output terminal and cable (positive terminal of ammeter connected to output terminal of alternator). Connect a carbon pile load to negative side of ammeter and negative

battery terminal, then connect a voltmeter to alternator output terminal and negative battery terminal (positive terminal of voltmeter connected to output terminal of alternator).

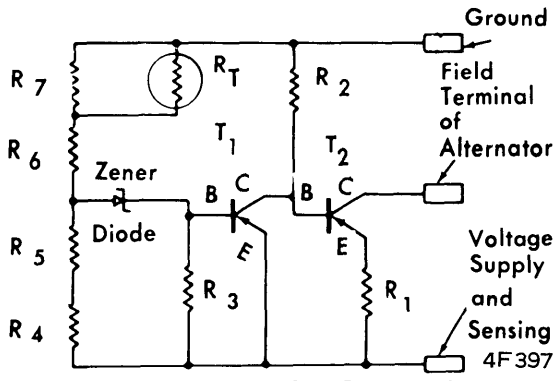
2) Start engine and increase load with carbon pile, and increase engine speed if required, to obtain 10 amperes output current. Operate engine for 15 minutes to stabilize temperature, then check ambient temperature of regulator by placing a thermometer 1" away from regulator case.

3) Output terminal voltage must be within limits indicated in table, at specified ambient temperature. If voltage is not within limits, replace regulator and repeat test. Increase load with carbon pile and engine speed until rated current output is reached. Voltage at output terminal should be at least 13 volts but should not exceed maximum limits indicated in table.



6S2019

MOTOROLA REGULATOR INTERNAL CIRCUITS
(4-LEAD CONNECTOR)



MOTOROLA REGULATOR INTERNAL CIRCUITS
(3-LEAD CONNECTOR)

1963-64 Voltage Specifications (At Ambient Temperature)

Ambient Temp. (°F)	Ⓢ Output Voltage	
	Minimum	Maximum
0°	14.60	15.40
20°	14.45	15.25
40°	14.26	15.08
60°	14.13	14.92
75°	14.00	14.80
80°	13.95	14.75
100°	13.80	14.60
120°	13.65	14.45
140°	13.60	14.28
160°	13.30	14.13

Ⓢ - With 10 ampere load.

1965-69 Voltage Specifications (At Ambient Temperature)

Ambient Temp. (°F)	Ⓢ Output Voltage	
	Minimum	Maximum
0°	14.6	15.4
20°	14.6	15.3
40°	14.3	15.0
60°	14.1	14.9
80°	14.0	14.8
100°	13.8	14.6
120°	13.7	14.5
140°	13.6	14.4
160°	13.3	14.1

Ⓢ - With 10 ampere load.