

# Jacking & Hoisting

## AMERICAN MOTORS

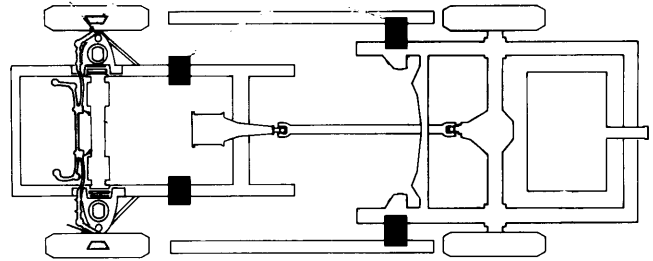
**ALL MODELS**

**Hoisting (Axle Contact Hoist)** – Hoist should contact lower control arms and rear axle housing or tubes.

**Hoisting (Frame Contact Hoist)** – This type hoist must be equipped with proper adapters so car will be supported at points marked.

**Jacking** – Floor jack may be used under rear axle housing or front suspension lower control arms.

**CAUTION** – Never use a jack on underbody except at jack points identified. Do not use any bumper jack.



**Fig. 1 American Motors Lifting Points**

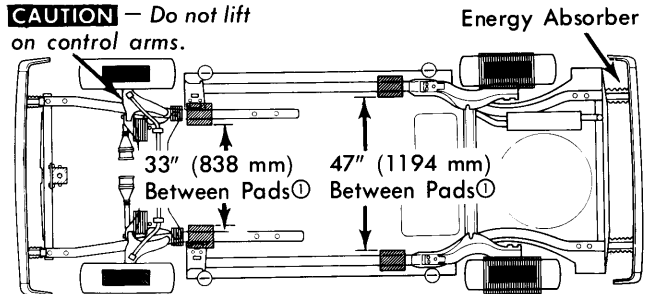
## CHRYSLER CORP.

**ALL MODELS**

**Jacking** – Floor jack may be used under rear axle housing or front suspension lower control arms.

**CAUTION** – Never use a jack on any part of underbody. Do not raise entire side of car with a jack midway between front and rear wheels or permanent body damage may result. Do not allow lifting plate fingers to contact axle cover plate when lifting from rear axle housing.

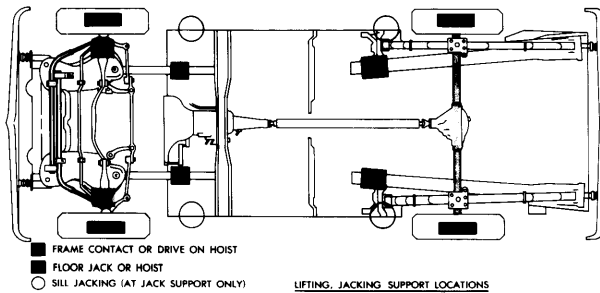
**CAUTION** – Do not lift on control arms.



① – 20 square inches minimum for four pads. Lift on full width of frame rail.

- ▣ TWIN POST LIFT POINTS
- ▣ FRAME CONTACT OR FLOOR JACK
- ▣ DRIVE ON HOIST
- SCISSORS JACK (EMERGENCY) LOCATIONS

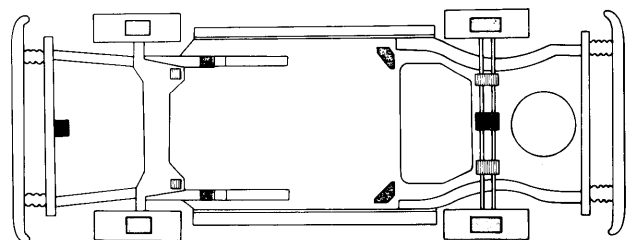
**Fig. 3 Chrysler Corp. Lifting Points (Omni & Horizon; Rampage Similar)**



**Fig. 2 Chrysler Corp. Lifting Points (Except Front Wheel Drive)**

**Hoisting (With Frame Contact Hoist)** – This type hoist must be equipped with proper adapters so car will be supported in correct places shown in illustrations.

**Hoisting (With Axle Contact Hoist)** – Hoist should contact lower control arms and rear axle housing.



**Fig. 4 Chrysler Corp. Lifting Points (Aries, Dodge 400, LeBaron & Reliant)**

## FORD MOTOR CO.

**ALL MODELS**

**Jacking (Escort, EXP, LN7, & Lynx)** – Front of vehicle may be raised with floor jack by placing jack under front body rail behind suspension arm-to-body bracket. Rear of vehicle may be raised by placing jack forward of tie rod bracket or under either rear control arm. Vehicle may also be raised at control points under rocker flange used for jack supplied with vehicle.

**Jacking (Ford, Mercury, Lincoln Town Car & Mark VI)** – Vehicle may be raised at lower arm strut connection, front

crossmember, or on siderail to which stabilizer is attached. Rear of vehicle may be raised by positioning jack between suspension arm brackets and differential housing. DO NOT place jack under suspension arm brackets.

**Jacking (All Other Models)** – Place jack under center of number 2 crossmember to raise front end. Jack may be placed under rocker flange at contact points for jack supplied with vehicle to lift front or rear or either side. Rear of vehicle may be lifted by positioning jack under differential housing.