

## AMERICAN MOTORS

### ALL MODELS

**Hoisting (Axle Contact Hoist)** – Hoist should contact lower control arms and rear axle housing or tubes.

**Hoisting (Frame Contact Hoist)** – This type hoist must be equipped with proper adapters so car will be supported at points marked.

**Jacking** – Floor jack may be used under rear axle housing or front suspension lower control arms.

**CAUTION** – Never use a jack on underbody except at jack points identified. Do not use any bumper jack.

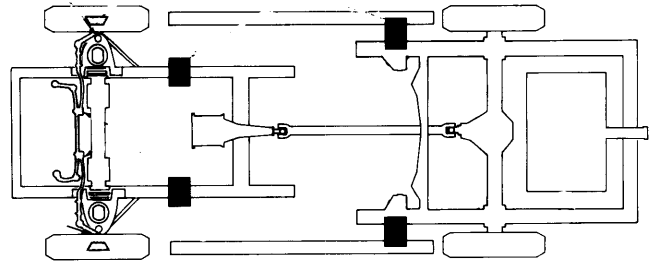


Fig. 1 American Motors Lifting Points

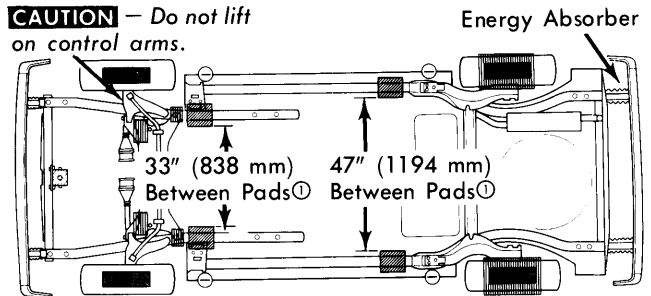
## CHRYSLER CORP.

### ALL MODELS

**Jacking** – Floor jack may be used under rear axle housing or front suspension lower control arms.

**CAUTION** – Never use a jack on any part of underbody. Do not raise entire side of car with a jack midway between front and rear wheels or permanent body damage may result. Do not allow lifting plate fingers to contact axle cover plate when lifting from rear axle housing.

**CAUTION** – Do not lift on control arms.



■ TWIN POST LIFT POINTS  
 ■ FRAME CONTACT OR FLOOR JACK  
 ● DRIVE ON HOIST  
 △ SCISSORS JACK (EMERGENCY) LOCATIONS

Ⓛ – 20 square inches minimum for four pads. Lift on full width of frame rail.

Fig. 3 Chrysler Corporation Lifting Points (Omni and Horizon)

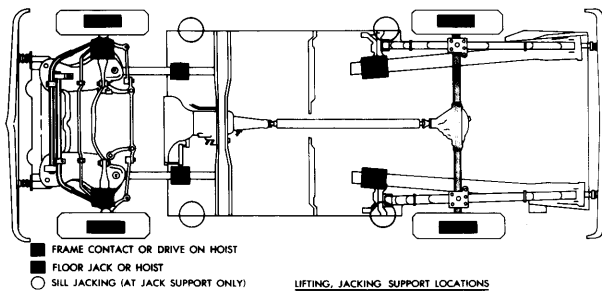
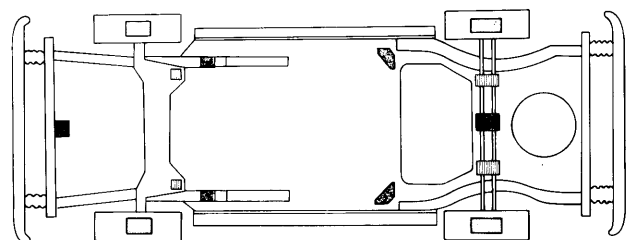


Fig. 2 Chrysler Corporation Lifting Points (Except Aries, Reliant, Omni and Horizon)

**Hoisting (With Frame Contact Hoist)** – This type hoist must be equipped with proper adapters so car will be supported in correct places shown in illustrations.

**Hoisting (With Axle Contact Hoist)** – Hoist should contact lower control arms and rear axle housing.



□ DRIVE ON HOIST  
 ■ FRAME CONTACT HOIST  
 □ TWIN POST HOIST  
 ■ FLOOR JACK

Fig. 4 Chrysler Corporation Lifting Points (Aries and Reliant)

## FORD MOTOR CO.

### ALL MODELS

**Jacking (Escort & Lynx)** – Front of vehicle may be raised with a floor jack by placing jack under front body rail behind suspension arm-to-body bracket. Rear of vehicle may be raised by placing jack forward of tie rod bracket or under either rear control arm. Vehicle may also be raised at contact points under rocker flange used for jack supplied with vehicle.

**Jacking (Ford, Mercury, Lincoln Town Car & Mark VI)** – Vehicle may be raised at lower arm strut connection, front

crossmember, or on siderail to which stabilizer is attached. Rear of vehicle may be raised by positioning jack between suspension arm brackets and differential housing. DO NOT place jack under suspension arm brackets.

**Jacking (All Other Models)** – Place jack under center of number 2 crossmember to raise front end. Jack may be placed under rocker flange at contact points for jack supplied with vehicle to lift front or rear or either side. Rear of vehicle may be lifted by positioning jack under differential housing.

# Jacking & Hoisting

## FORD MOTOR CO. (Cont.)

**NOTE** — DO NOT use bumper jack on other than Ford, Mercury, Lincoln or Mark VI models.

**Hoisting** — Ensure that hoist manufacturer's instructions are followed. Frame contact must be made and adapters used to lift vehicle in accordance with frame contact chart and Fig. 5. On Escort and Lynx models, front contact points are at front body rail behind suspension arm-to-body bracket. Rear contact points are forward of tie rod body brackets.

**CAUTION** — Do not allow hoist or adapters to contact suspension, exhaust or steering components.

### FORD FRAME CONTACT CHART

1981 Measurement for Frame Contact Points (In.)				
Model	A	B	C	D
Capri & Mustang	17.5	75.0	24.0	12.0
Fairmont & Zephyr	20.7	82.5	17.4	15.8
Ford & Mercury	21.5	97.5	25.0	23.0
Granada & Cougar	21.5	83.5	26.4	26.4
Lincoln Town Car	21.5	100.5	25.0	23.0
Mark VI	21.5	97.5	25.0 </td <td>23.0</td>	23.0
Thunderbird & XR7	22.0	83.4	27.5	25.0

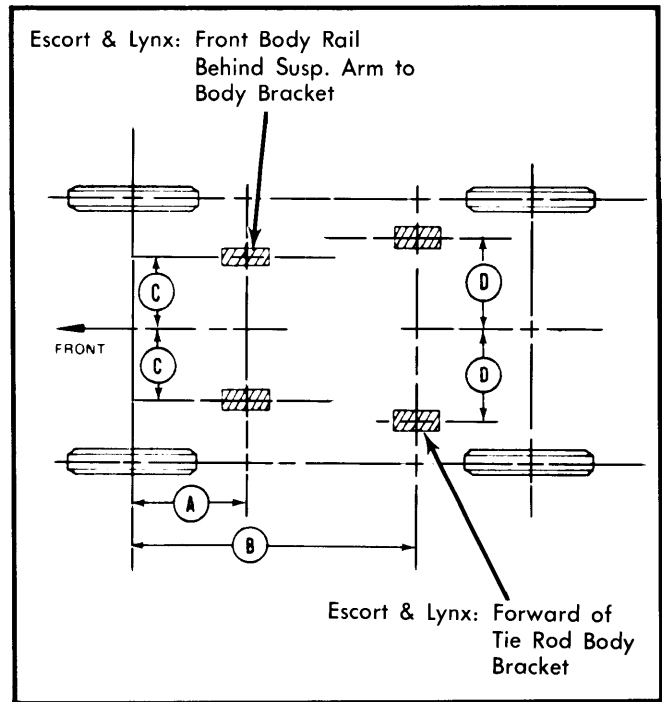


Fig. 5 Ford Motor Co. Frame Contact Points

## GENERAL MOTORS

### BUICK

**Axle Contact Hoist** — Hoist should contact front lower control arms or front crossmember, and rear axle as shown in illustrations.

**Frame Contact Hoist** — Proper adapters must contact vehicle in areas shown in illustrations. Adapters must be positioned to distribute load and support vehicle in a stable manner. Do not allow lift pads to contact catalytic converter or other exhaust system components.

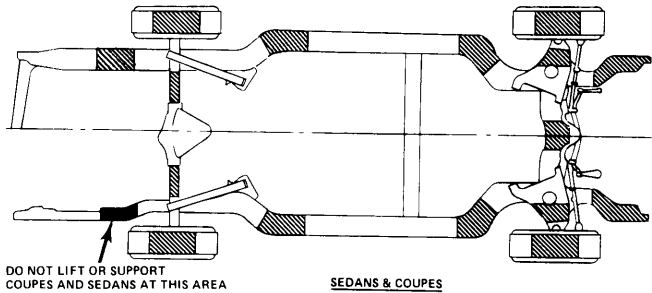


Fig. 6 Buick Lifting Points (Except Riviera and Skylark)

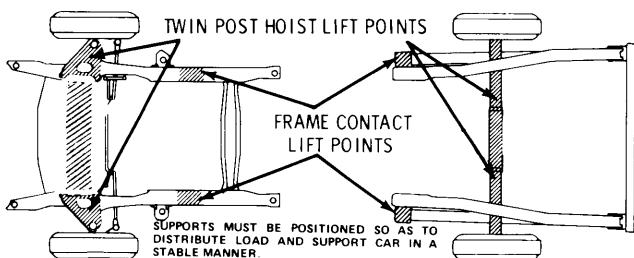


Fig. 7 Buick Skylark Lifting Points

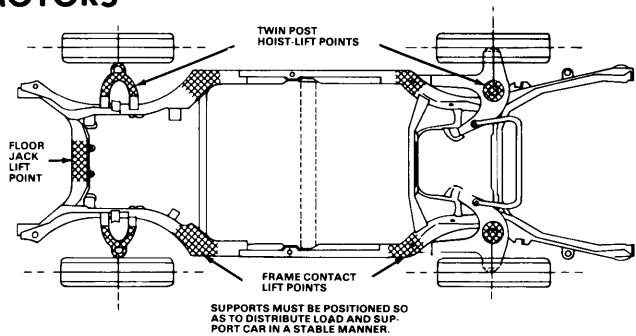


Fig. 8 Buick Riviera Lifting Points

### CADILLAC

**Floor Jack** — Do not use floor jacks under frame side rails at midcar area on coupes or at center pillar area on sedans, or at any other position that is unboxed.

**NOTE** — Preferred type of hoist for lifting all Cadillac cars is one which engages front suspension and rear axle or all four wheels. Use bumper jacks only in slotted areas.

**Rail & Fork Lift (Twin Post) Hoist (Exc. Eldorado & Seville)** — Be sure car is properly centered over hoist and hoist arms are positioned under flattened part of lower control arm flange (outboard of safety locators). Do not lift by rear lower control arms.

**Rail & Fork Lift (Twin Post) Hoists (Eldorado & Seville)** — Be sure centerline of door is behind centerline of lift post and that front hoist saddle adapters engage lower suspension arm just inboard of stabilizer linkage (both sides). Position rear