

## 1971-72 PINTO SINGLE PISTON DISC

Pinto (1971-72)

### DESCRIPTION

Single piston, sliding caliper ventilated disc type, actuated by hydraulic system. Disc (rotor) is fixed to front wheel hub. Anchor plate is bolted to wheel spindle arm by two bolts, and caliper is attached to anchor plate by a cottered key. Sliding caliper contains a single cylinder and piston assembly. Cylinder bore contains a piston with a molded rubber dust boot to seal cylinder bore.

### ADJUSTMENT

No adjustments are required on brakes. Disc brakes are self-adjusting.

### SERVICING

#### Bleeding System

See "Hydraulic Brake Bleeding" in this section.

#### Lining Replacement

**Removal** — Remove caliper from hub and rotor (see "Brake Caliper — Removal" below). Remove shoe and lining assemblies from anchor plate. Clean caliper, anchor plate and rotor assembly and inspect for fluid leakage, wear, or damage.

**Installation** — Be sure that brake shoe and anti-rattle clips are in place, then position shoe and lining assemblies in anchor plate. Seat piston in caliper and install caliper in anchor plate, using new stainless steel cotter pins.

### REMOVAL & INSTALLATION

#### Brake Caliper

**Removal** — Remove tire and wheel. Remove the two stainless steel cotter pins from caliper retaining key and slide key either inward or outward from anchor plate. Use a hammer and drift, if necessary, to remove key. Press caliper assembly inward and upward against caliper support springs and lift assembly from anchor plate. **CAUTION** — Use care not to stretch or twist flexible brake hose. Use wire to suspend caliper assembly from upper suspension arm.

**Installation** — Position caliper to anchor plate with lower beveled edge of caliper on top of rearward caliper support spring. Carefully slide caliper on over shoes in a pivoting motion until caliper upper beveled edge can be pushed over forward caliper support spring. Use a heavy screwdriver to hold caliper over upper caliper support spring and against anchor plate, then insert caliper retaining key. Remove screwdriver and lightly tap caliper key into position. Install two new stainless steel cotter pins in caliper retaining key. Depress brake pedal several times to position caliper and shoe assemblies. Check for any fluid leaks.

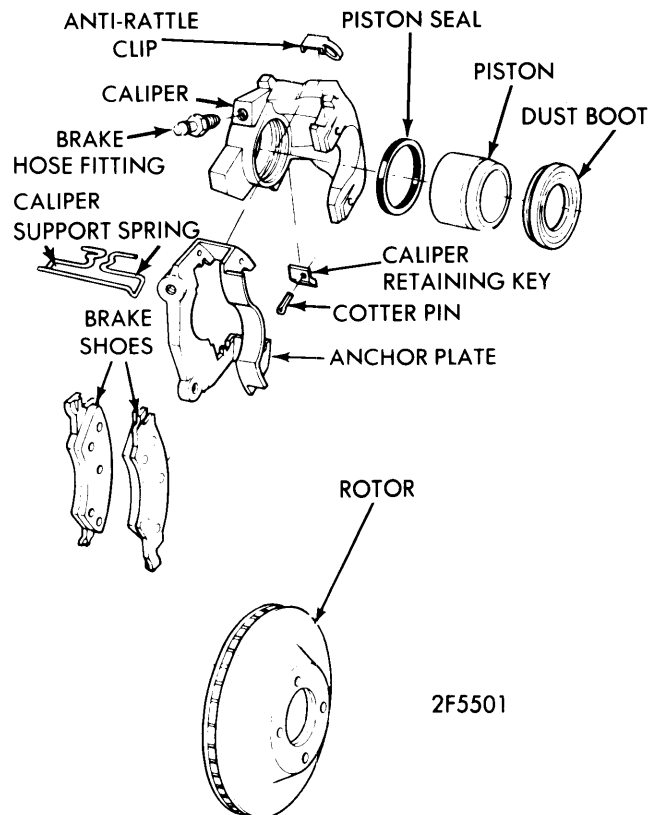
#### Brake Rotor

**Removal** — Remove caliper and brake shoes (do not disconnect hydraulic line). Hang caliper from car frame so that brake hose is not under strain. Remove grease cap, cotter pin, nut lock, adjusting nut and flat washer from spindle. Remove hub and rotor assembly from spindle.

**Installation** — Reverse removal procedure, making sure that wheel bearings are adjusted to specifications and grease in hub is clean and adequate.

#### Rotor Splash Shield

To remove splash shield, caliper, hub and rotor assemblies must be removed (not necessary to disconnect hydraulic lines). Remove splash shield bolts. Remove shield and gasket. To install, reverse removal procedure and use a new splash shield to spindle gasket (straighten shield if bent).



PINTO DISC BRAKE ASSEMBLY

### OVERHAUL

#### Pressure Differential Valve

Valve is serviced as an assembly and is never adjusted or overhauled.

#### Brake Caliper

**Disassembly** — Follow procedure outlined in "Lining Replacement — Removal". To remove piston, apply air pressure to caliper fluid port (tap lightly around piston if it is seized). Remove dust boot from caliper and piston seal from cylinder.

**Reassembly** — Apply film of clean brake fluid to new piston seal and install in cylinder bore. Set new dust boot flange squarely in caliper bore outer groove. Coat piston with specified brake fluid (C6AZ-19542-A) and install piston in

# Brake Systems

## 1971-72 PINTO SINGLE PISTON DISC (Cont.)

cylinder bore. Spread dust boot over piston while installing. Seat dust boot in piston groove. Follow procedure outlined in "Lining Replacement — Installation".

### TIGHTENING SPECIFICATIONS

Application	Ft. Lbs.
Caliper to Spindle Bolts (Upper) .....	① 90-120
(Lower) .....	55-75
Bleeder Screw .....	6-15
Brake Tube Fitting Nuts .....	10-15
Wheel Lug Nuts .....	70-115

① — The upper bolt must be tightened first and new bolts must be used.

### DISC BRAKE LINING SPECIFICATIONS

Lining Thickness .....	.347"
Lining Wear Limit (From Top of Rivets) .....	Max. .030"
Width .....	1.42"
Length .....	4.00"

### BRAKE DISC SPECIFICATIONS

Diameter .....	9.30"
Parallelism .....	.0007"
Runout .....	.003"
Surface, Micro-Inches .....	15-80
Minimum Thickness .....	①

① — Rotor thickness after refinishing limited to minimum dimension to be found marked on each rotor.