

## 1971-73 VEGA REAR

Vega (1971-73)

### DESCRIPTION

The rear suspension is of the link type with coil springs. System uses four arms to attach rear axle assembly to the frame. A bracket on the axle supports each rear spring. Two shock absorbers are mounted between brackets on axle housing and frame members.

### REMOVAL & INSTALLATION

#### COIL SPRING

**Removal** — Raise vehicle and support rear axle with adjustable lifting device. Disconnect shock absorber lower brackets. Lower the axle housing, then remove springs and insulators.

**Installation** — To install, reverse removal procedure, tightening nuts and bolts to specifications.

#### UPPER CONTROL ARM

**Removal** — Raise vehicle and support rear axle. Remove bolts securing control arm and remove arm from vehicle.

**Installation** — To install, reverse removal procedure, tightening nuts and bolts to specifications. **NOTE** — When tightening nuts and bolts, vehicle must be at riding height.

#### LOWER CONTROL ARM

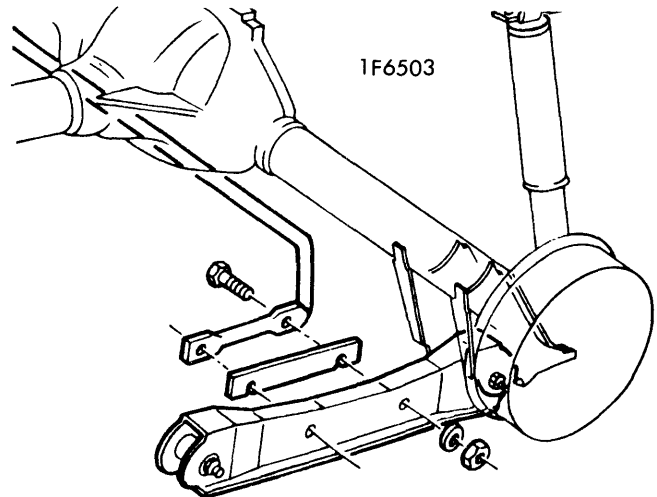
**Removal** — Raise vehicle and support rear axle. Disconnect stabilizer bar (if equipped). Remove lower control arm retaining bolts and remove arm from vehicle.

**Installation** — To install, reverse removal procedure, tightening nuts and bolts to specifications. **NOTE** — When tightening nuts and bolts, vehicle must be at riding height.

#### STABILIZER BAR

**Removal** — Raise vehicle, remove bolts securing bar to control arms, and remove from vehicle.

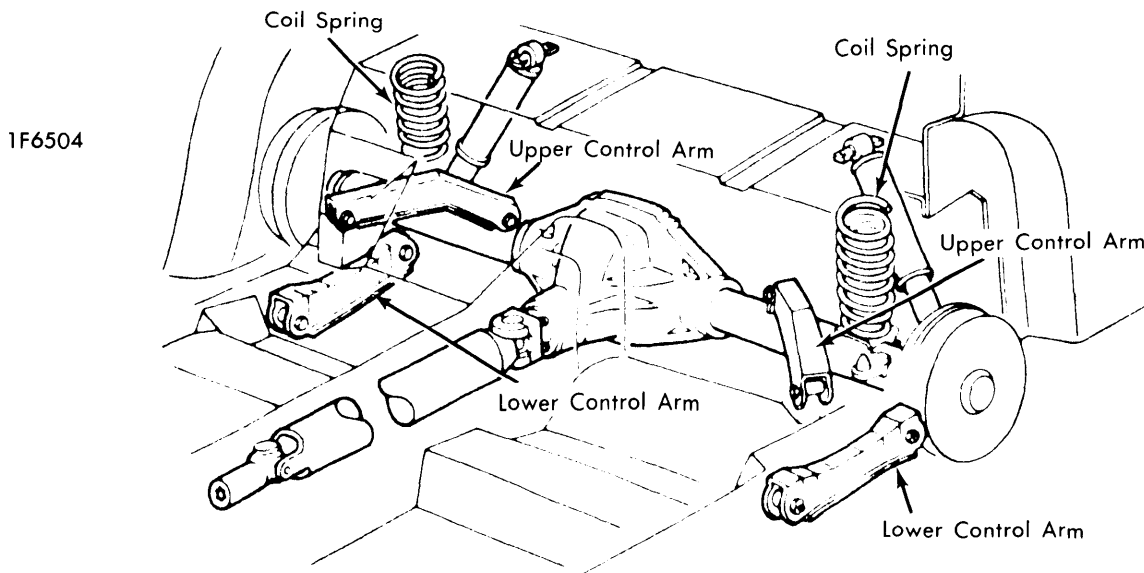
**Installation** — To install, reverse removal procedure, noting the following: shims may have to be added to fill gaps between stabilizer bar and control arms.



REAR STABILIZER INSTALLATION

#### TIGHTENING SPECIFICATIONS

Application	Ft. Lbs.
Upper Control Arm .....	60
Lower Control Arm .....	80
Shock Absorber (Upper Mounting) .....	18
Shock Absorber (Lower Mounting)	
1971-72 .....	80 INCH Lbs.
1973 .....	42 INCH Lbs.
Stabilizer Bolts .....	36



VEGA REAR SUSPENSION