

## INTERNATIONAL HARVESTER

150 &amp; 200

Scout II

1310, 1510 MHC

## REMOVAL &amp; INSTALLATION

**NOTE** — Disconnect battery before servicing any electrical components.

**NOTE** — Scribe mark on steering wheel and shaft to aid reassembly.

## HORN BUTTON &amp; STEERING WHEEL

**150 & 200 Models** — Remove horn button, spring, and steering wheel retaining nut. Using a suitable puller (SE-1821), remove steering wheel from steering shaft. To install, reverse removal procedure.

**Scout II** — Rotate horn button counterclockwise and remove. Disconnect horn wire. Remove retaining screws and remove horn contact ring. Remove nut and washer securing steering wheel to shaft, and using suitable wheel puller (SE-1820), remove steering wheel. To install, reverse removal procedure.

**Motor Home Chassis** — Remove horn pad and pad mounting plate. Remove steering wheel retaining nut and washer. Using a suitable wheel puller, remove steering wheel from steering shaft. To install, reverse removal procedure.

## DIRECTIONAL SIGNAL SWITCH

**150 & 200 Models (Exc. W/Tilt Wheel)** — 1) Remove horn button, steering wheel, and the three cover screws. Depress lock plate downward as far as possible using suitable tool (SE-2500). Pry retaining ring out of column shaft groove, then remove tool retaining ring and lock plate. **CAUTION** — If steering column is removed from vehicle, shaft can slide out of column when retaining ring is removed.

2) Slide upper bearing preload spring and turn signal canceling cam off upper steering shaft. Slide thrust washer off upper steering shaft. Remove turn signal lever screw and lever. Push hazard warning switch in and unscrew knob. Remove the three signal switch mounting screws. Remove the four mounting bracket screws, then remove bracket from column jacket. Pull connector out of bracket on jacket. Remove protector from jacket and strip wires from it. Pull signal switch straight up with wire protector. To reassemble, reverse removal procedure.

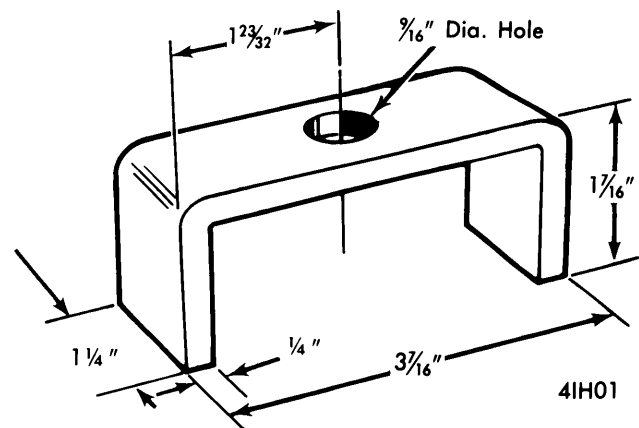
**150 & 200 W/Tilt Wheel** — 1) Remove horn button and steering wheel. Remove signal switch wire protector from inside steering column. Wrap a piece of tape around upper connector and wires to prevent snagging when removing switch. Remove tilt release lever and signal switch lever. Push hazard warning plunger in and remove hazard warning knob. Remove upper shift lever from bowl. Remove indicator wire and neutral start switch if automatic transmission column.

2) Depress lock plate with finger and pry retaining ring out of groove with screwdriver. Remove lock plate, canceling cam, and upper bearing spring. Remove the three signal switch mounting screws and lift switch up. To install, reverse removal procedure.

**Scout II** — 1) Remove horn button and steering wheel. Remove horn contact spring. Use suitable tool (see illustration)

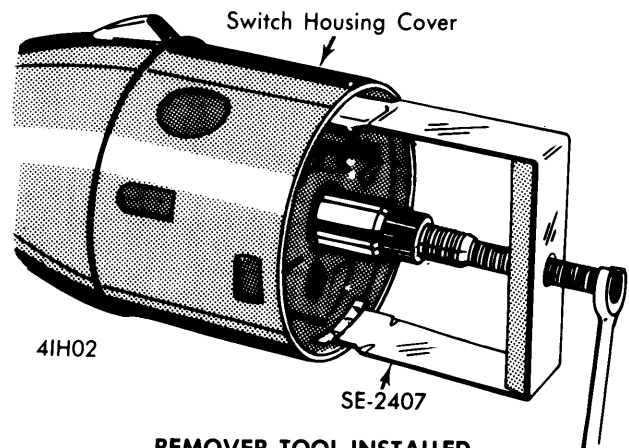
to depress lock plate by installing tool and tightening down with steering wheel retainer nut. Remove lock plate snap ring with screwdriver. Remove lock plate depressor tool, snap ring and lock plate from column. **NOTE** — If steering column is removed from vehicle, shaft can slide out of column when retaining ring is removed.

2) Remove turn signal canceling cam, upper bearing preload spring and thrust washer. Remove screw securing turn signal lever to signal switch and remove lever. Push hazard warning switch in and unscrew knob. Remove three screws securing signal switch assembly. Pull connector out of bracket on jacket tube. Wrap a piece of tape around upper part of connector and wires to prevent snagging when removing switch. Pull switch straight out with wire protector. To install, reverse removal procedure.



LOCK PLATE DEPRESSOR TOOL

**Motor Home Chassis** — 1) Remove horn pad and steering wheel. Remove horn contact spring, turn signal switch canceling cam, and jacket tube upper bearing spring. Pry wiring harness cable cover out of column retaining slots. Mark location of each wire in halfmoon connector and then remove each individual wire from connector using a suitable terminal removal tool (SE-2406). Insert tool into lower end of connector and push in until tool bottoms on connector. Remove tool and pull wire from connector.



REMOVER TOOL INSTALLED

2) Remove directional signal lever retaining screw and remove lever. Push in on hazard warning light knob and then unscrew and remove knob. Remove shift selector indicator