

## AUDI 4000 & QUATTRO

### DESCRIPTION

The Audi 4000 and Quattro models use a 2-piece safety steering column with a slip joint flange connection. Steering column is supported by the column tube and steering lock assembly.

### REMOVAL & INSTALLATION

#### STEERING COLUMN

##### Removal

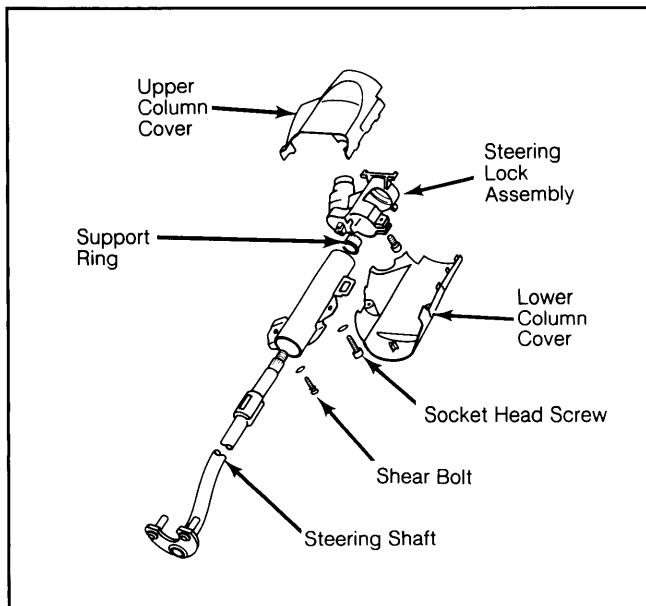
1) Disconnect battery ground cable. Remove steering wheel and column switches. See Audi 4000 and Quattro under Steering Wheels & Column Switches in this section.

2) From under hood, remove clamp bolt attaching steering shaft clamp to steering gear pinion shaft. Remove column cover bolts and steering column covers. See Fig. 1.

3) Pry lock washer off steering shaft. Remove spring. Remove contact ring and steering lock assembly. Remove support ring from column tube. See Fig. 1. Center punch shear bolt attaching column tube to dash. Drill out shear bolt. Remove socket head screw attaching column tube to dash.

4) From inside vehicle, force dust boot out of floor board. Remove steering column tube and shaft as an assembly.

Fig. 1: Exploded View of Upper Steering Column



##### Installation

1) Install assembled steering column into vehicle. Install shear bolt and socket head bolt finger tight. Push dust boot into floor board until seated. Place clamp onto steering gear pinion shaft. Place support ring into column tube.

2) Install steering lock assembly on steering column. Install contact ring, spring and new lock washer. Tighten socket head screw. Tighten shear bolt until head snaps off.

3) Install upper and lower column covers. Install column switches and steering wheel. See Audi 4000

and Quattro under Steering Wheels & Column Switches in this section.

### OVERHAUL

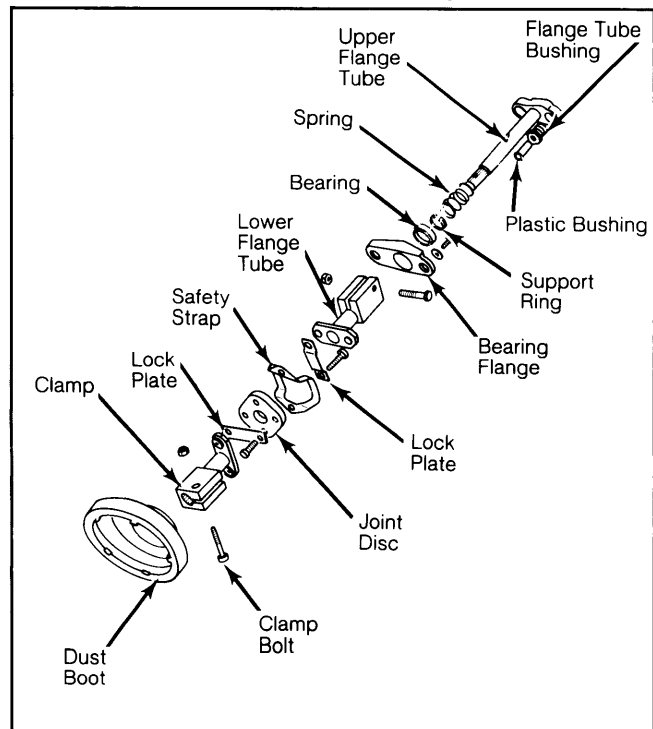
#### STEERING COLUMN

##### Disassembly

1) On lower steering shaft, remove clamp bolt attaching lower flange tube to upper flange tube. Separate flange tubes and remove bearing flange, bearing, support ring, spring and washer. See Fig. 2.

2) Push upper flange tube toward steering shaft until components can be separated. Remove flange tube bushings with plastic bushings. See Fig. 2.

Fig. 2: Exploded View of Lower Steering Column



3) Remove lower flange tube-to-clamp bolts. Separate lower flange tube from clamp. Inspect joint disc, safety strap and lock plates for damage or wear.

4) On steering shaft, slide column tube off steering shaft. Inspect steering shaft, support ring and steering lock assembly for wear or damage. Replace components as necessary. See Fig. 1.

##### Reassembly

To reassemble steering column, reverse disassembly procedure. Press flange tube bushing and plastic bushing in by hand.

#### TIGHTENING SPECIFICATIONS

Application	Ft. Lbs. (N.m)
Clamp Bolt .....	22 (30)
Lock Plate Bolts .....	18 (24)
Lower Flange Tube Bolt .....	22 (30)
Socket Head Screw .....	14 (19)
Steering Wheel Nut .....	29 (39)