

ISUZU I-MARK

DESCRIPTION

The rear suspension is of link type and consists mainly of a lateral rod, control arms, coil springs, shock absorbers and a stabilizer bar on some models. The lateral rod is connected to the rear axle housing and to the body. Control arms are connected to the body and rear axle housing to control front and rear movement of the rear axle. Shock absorbers are connected to the rear wheel arch and to rear axle housing.

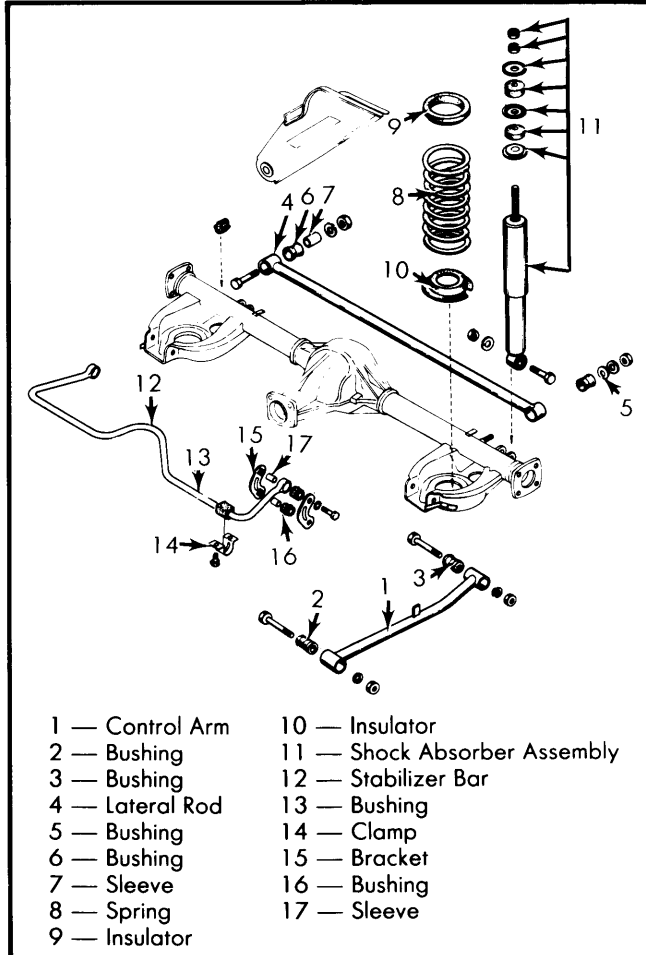


Fig. 1 Exploded View of Isuzu I-Mark Rear Suspension

LATERAL ROD

Removal — Raise vehicle and support under rear axle housing. Remove bolt that attaches lateral rod to body. Remove nut that attaches lateral rod to rear axle housing. Remove lateral rod.

Installation — Install lateral rod to rear axle housing and to body. Do not tighten bolts at this time. Lower vehicle to ground. Tighten lateral rod attaching bolts with full weight of vehicle on ground.

CONTROL ARMS

Removal — Raise vehicle and support under rear axle housing. Remove bolts attaching control arms to rear axle housing. Remove bolts attaching control arms to body. Remove control arms.

Installation — Install control arms to body and to rear axle housing. Do not tighten bolts at this time. Lower vehicle to ground. Tighten control arm bolts with full weight of vehicle on ground.

COIL SPRINGS

Removal — Raise rear of vehicle and support with safety stands. Place a floor jack under rear axle housing and raise slightly to support axle housing. Remove bolts attaching bottom of shock absorbers to rear axle housing. Lower axle housing until coil springs become loose enough to remove.

Installation — Place spring in its proper position, making sure that top insulator is in place. Raise axle housing until bottom of shock absorbers can be reconnected. Install lower shock absorber attaching bolts. Do not tighten bolts at this time. Lower vehicle to ground. Tighten lower shock attaching bolts with full weight of vehicle on ground.

SHOCK ABSORBERS

Removal — Raise rear of vehicle and support under axle housing with safety stands. Remove lower shock absorber attaching bolts. Remove fuel tank cover from inside trunk. Remove upper shock absorber attaching nuts. Remove shock absorbers.

Installation — Install upper end of shock absorber into wheel arch. Install upper shock absorber attaching nuts. Install fuel tank cover in trunk. Install lower shock absorber attaching bolts. Remove safety stands and lower vehicle.

STABILIZER BAR

Removal — Raise vehicle and support with safety stands. Remove bolts attaching stabilizer bar-to-axle housing brackets. Remove clamps attaching stabilizer bar to body. Remove stabilizer bar.

Installation — Install rubber bushings on stabilizer bar. Install clamps that attach stabilizer bar to body. Install bolts that attach stabilizer bar to axle housing. Do not tighten bolts at this time. Lower vehicle to ground. Tighten stabilizer bar attaching bolts with full weight of vehicle on ground.

TIGHTENING SPECIFICATIONS

Application	Ft. Lbs. (N.m)
Control Arm Bolts	29 (39)
Lateral Rod-to-Axle Housing	54 (73)
Lateral Rod-to-Body	47 (64)
Shock Absorber-to-Axle Housing	29 (39)