

10-6 Steering Wheel & Column Switches

HONDA

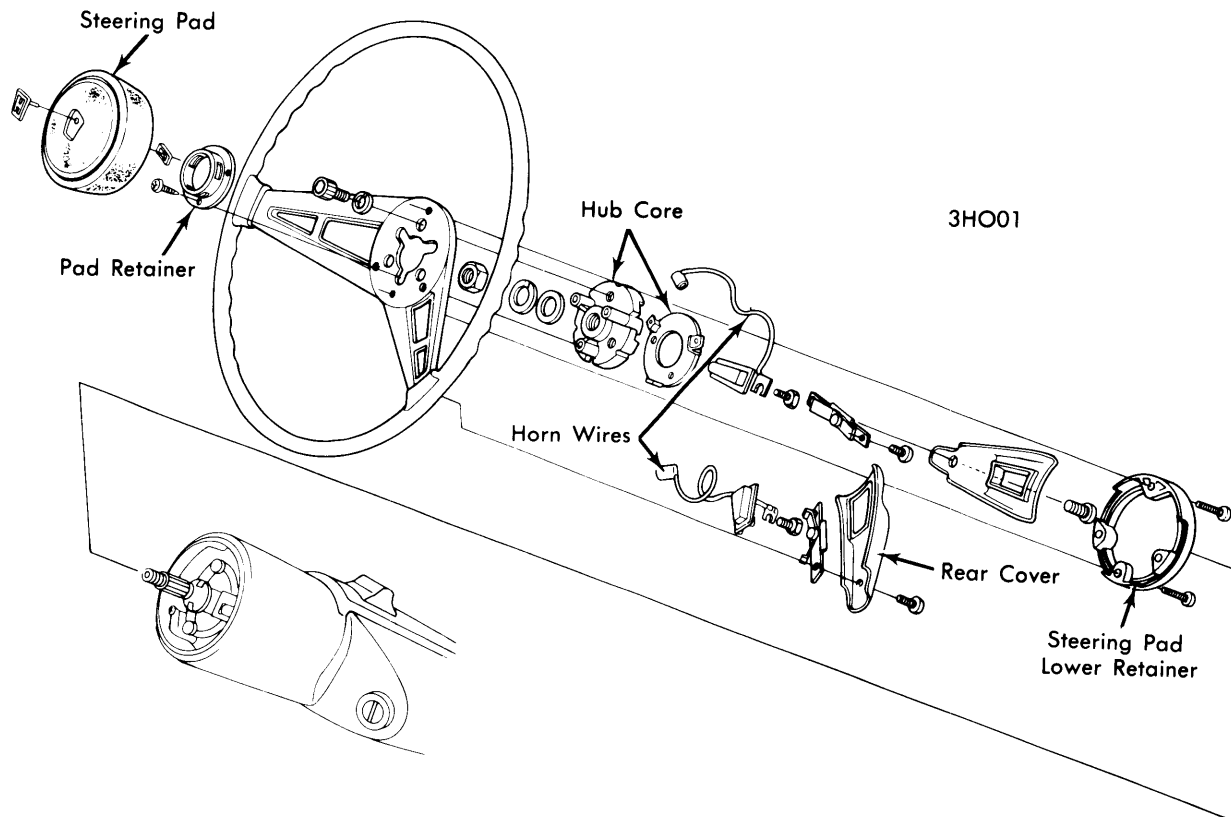
Civic

HORN BUTTON & STEERING WHEEL

Lift off steering pad, then unscrew steering wheel retaining nut. Using hand force only, hit backside of wheel spokes to remove steering wheel from column shaft. Detach steering pad retaining bracket. Separate steering wheel and hub core assembly. Disconnect horn wire at hub core. Remove steering wheel spoke rear cover and remove horn springs and horn holder. To install, reverse removal procedure.

TURN SIGNAL SWITCH

Remove retaining screws for upper and lower halves of steering column. Loosen turn signal switch cam nut; then, leaving screwdriver in nut head, lightly tap screwdriver to free cam nut. Lift out turn signal switch assembly after disconnecting wiring coupler. When installing turn signal switch, engage locating tab on switch with notch in steering column; reverse other procedures. *NOTE* — Switch removal is also described as part of steering column removal. See appropriate article under *STEERING COLUMNS* in this section.



HONDA STEERING WHEEL & COMPONENTS