

# Steering Gears & Linkage

## 1963-71 JAGUAR XKE

XKE 3.8 (1963-64)  
 XKE 4.2 (1965-71)  
 XKE 2+2 (1967-70)

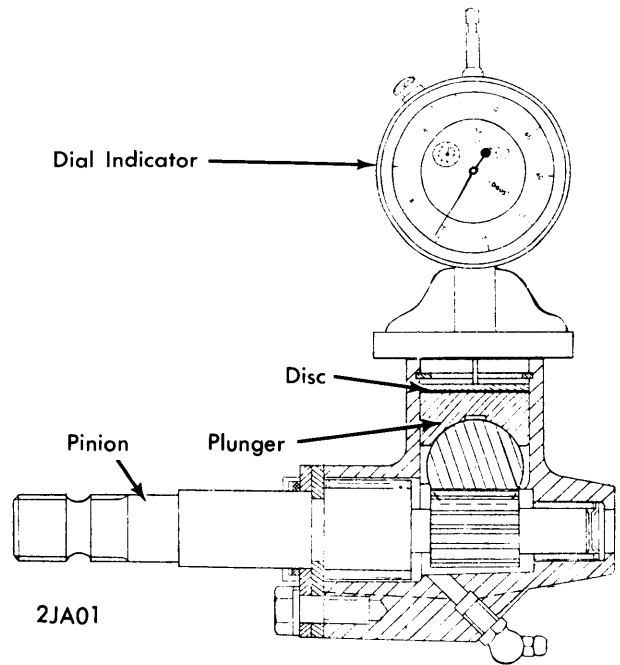
### DESCRIPTION

Steering gear is rack and pinion type. Motion is transmitted through pinion to steering rack. Tie rods are attached at inside ends to steering rack, and outside ends to steering knuckle by ball joints. Steering rack assembly is attached to crossmember as a complete unit.

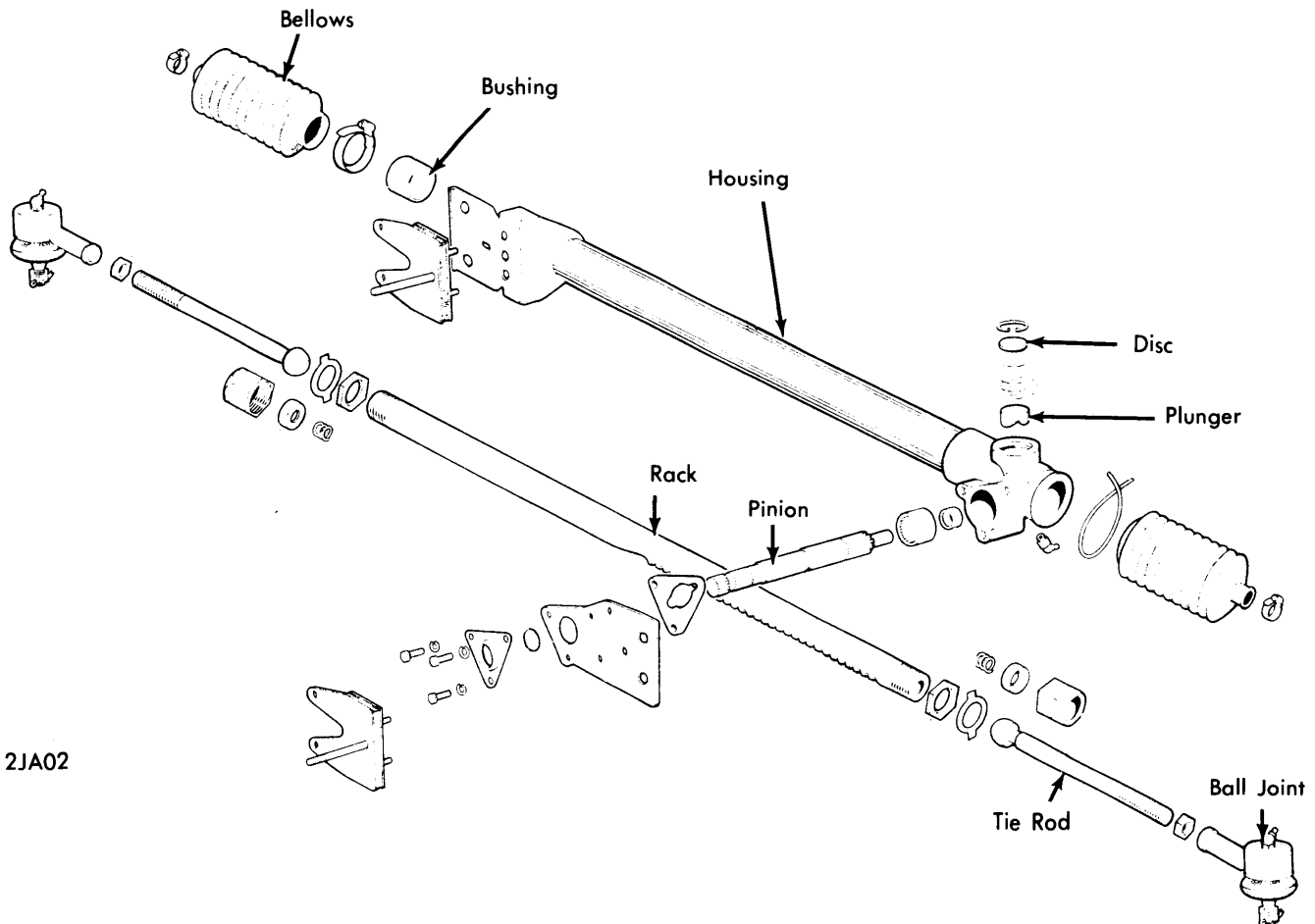
### ADJUSTMENT

#### STEERING GEAR END FLOAT

Attach dial indicator to steering housing with stem in contact with center of disc. Apply downward pressure to disc, to make sure pinion is fully engaged with rack at its lowest point. Set gauge to zero. Apply upward pressure to rack, to eliminate end float in plunger. Reading on gauge is total end float. End float should be .006-.010", if not add shims until correct end float is obtained (see illustration).



END FLOAT ADJUSTMENT



STEERING GEAR COMPONENTS

## 1963-71 JAGUAR XKE (Cont.)

### REMOVAL & INSTALLATION

#### STEERING GEAR & LINKAGE

**Removal** – Remove radiator. Disconnect tie rod ball joints from steering arms. Turn steering until Allen screw, in steering column, is accessible and remove screw. From steering housing side remove upper and lower lock nuts, withdraw bolts and spacer tubes. Repeat procedures for other side, remove steering gear and linkage.

**Installation** – To install steering gear, reverse removal procedure, tighten nuts and bolts. Be sure to check wheel alignment.

### OVERHAUL

#### STEERING GEAR

**Disassembly** – Remove retaining nuts on tie rods and remove ball end assemblies. Remove clips securing bellows and remove

bellows. Remove tie rods and housings. Remove housing lock nuts, socket and socket springs. Remove set screws to pinion shaft oil seal retainer and remove "O" ring, housing mounting plate, bearing retainer plate and withdraw pinion shaft. Remove circlip, disc, washer, shims and plunger from housing. Withdraw rack from housing.

**Inspection** – Thoroughly clean and dry all parts. Inspect all parts for wear or damage, replace as necessary. Check all rubber boots, "O" rings and seals, replace if damaged. Check bushings and replace if worn. If bushings are replaced, soak new bushings in clean motor oil first.

**Reassembly** – Lubricate parts before reassembly. To reassemble steering gear, reverse disassembly procedure.